

À des fins de recherche uniquement

Anticorps Monoclonal anti-CD107b / LAMP2



Numéro de catalogue: **FITC-65053**

Informations de base

Numéro de catalogue: FITC-65053	Numéro d'acquisition GenBank: BC002965	Méthode de purification: Purification par affinité
Taille: 100tests , 5 µl/test	Identification du gène (NCBI): 3920	CloneNo.: H4B4
Hôte: Mouse	Nom complet: lysosomal-associated membrane protein 2	Dilutions recommandées: IF 1:50-1:500
Isotype: IgG1, kappa	MW calculé 45 kDa	Excitation/Emission maxima wavelengths: 495 nm / 524 nm

Applications

Applications testées: FC, IF	Contrôles positifs: IF : cellules HeLa,
Spécificité de l'espèce: Humain	

Informations générales

LAMP2 (CD107b) is a Lysosomal membrane glycoprotein. LAMP2 is extensively glycosylated with asparagine-linked oligosaccharides which protect it from intracellular proteolysis (PMID: 10521503). Although LAMP-2 is localized primarily in the endosome-lysosomal membrane of cells, it is also found on the plasma membrane under certain circumstances, e.g., after platelet activation, during granulocytic differentiation and activation, and in some tumor cells (PMID: 12221139). LAMP is involved in lysosomal stability and autophagy (PMID: 12221139). This glycoprotein provides selectins with carbohydrate ligands. LAMP2 may play a role in tumor cell metastasis (PMID 9426697).

Stockage

Stockage:
Store at 2-8°C. Avoid exposure to light. Stable for one year after shipment.
Tampon de stockage:
PBS with 0.09% sodium azide and 0.5% BSA.

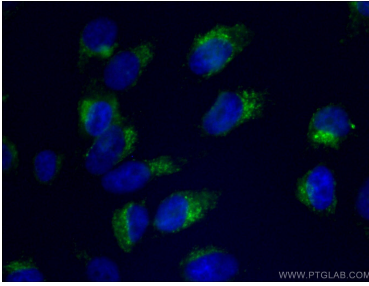
For technical support and original validation data for this product please contact:

T: 1 (888) 4PTGLAB (1-888-478-4522) (toll free in USA), or 1(312) 455-8498 (outside USA)

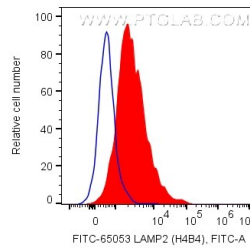
E: proteintech@ptglab.com
W: ptglab.com

This product is exclusively available under Proteintech Group brand and is not available to purchase from any other manufacturer.

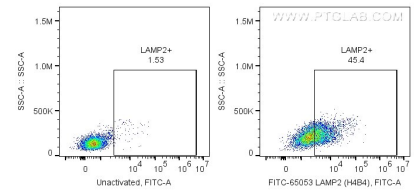
Données de validation sélectionnées



Immunofluorescent analysis of (4% PFA) fixed HeLa cells using FITC-65053 (CD107b antibody) at dilution of 1:50 and CoraLite488-Conjugated AffiniPure Goat Anti-Mouse IgG(H+L).



1X10⁶ PHA-activated human PBMCs were surface stained with 5 ul FITC Plus Plus Anti-Human CD107b (FITC-65053, Clone: H4B4). Unactivated PBMCs were used as negative control. Cells were not fixed. Lymphocytes were gated.



1X10⁶ PHA-activated human PBMCs were surface stained with 5 ul FITC Plus Plus Anti-Human CD107b (FITC-65053, Clone: H4B4). Unactivated PBMCs were used as negative control. Cells were not fixed. Lymphocytes were gated.