

À des fins de recherche uniquement

Anticorps Monoclonal anti-CD3ε

Numéro de catalogue: FITC-65060

5 Publications



Informations de base

Numéro de catalogue:

FITC-65060

Taille:

100ug, 0.1 mg/ml

Hôte:

Hamster

Isotype:

IgG

Numéro d'acquisition GenBank:

BC098236

Identification du gène (NCBI):

12501

Nom complet:

CD3 antigen, epsilon polypeptide

Méthode de purification:

Purification par affinité

CloneNo.:

145-2C11

Excitation/Emission maxima wavelengths:

494 nm / 520 nm

Applications

Applications testées:

FC

Demandes citées:

FC

Spécificité de l'espèce:

souris

Espèces citées:

souris

Informations générales

CD3 is a multimeric protein associated with the T-cell receptor (TCR) to form a complex involved in antigen recognition and signal transduction (PMID: 15885124). CD3 is composed of CD3γ, δ, ε, and ζ chains (PMID: 1826255). It is expressed by thymocytes in a developmentally regulated manner, T cells, and some NK cells (PMID: 3289580). The TCR recognizes antigens bound to major histocompatibility complex (MHC) molecules. TCR-mediated peptide-MHC recognition is transmitted to the CD3 complex, leading to the intracellular signal transduction (PMID: 11985657).

Publications notables

Autrice	Pubmed ID	Journal	Application
Dingyi Wang	35236203	Drug Deliv	FC
Xudong Fan	36382303	Asian J Pharm Sci	FC
Xujiao Ren	37327558	Vet Microbiol	FC

Stockage

Stockage:

Store at 2-8°C. Avoid exposure to light. Stable for one year after shipment.

Tampon de stockage:

PBS avec azoture de sodium à 0,1 %.

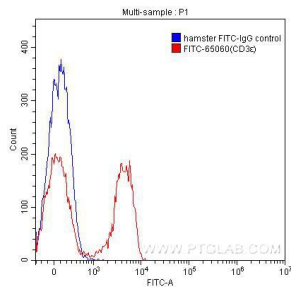
For technical support and original validation data for this product please contact:

T: 1 (888) 4PTGLAB (1-888-478-4522) (toll free in USA), or 1(312) 455-8498 (outside USA)

E: proteintech@ptglab.com
W: ptglab.com

This product is exclusively available under Proteintech Group brand and is not available to purchase from any other manufacturer.

Données de validation sélectionnées



1X10⁶ C57BL/6 mouse splenocytes were surface stained with 0.20 ug FITC-Anti-Mouse CD3ε (FITC-65060, clone 145-2C11) (red) or 0.20 ug FITC-Hamster IgG isotype control (blue). Cells were not fixed.