

À des fins de recherche uniquement

# Anticorps Monoclonal anti-Ly-6G

Numéro de catalogue: FITC-65078



## Informations de base

Numéro de catalogue: FITC-65078	Numéro d'acquisition GenBank: X70920	Méthode de purification: Purification par affinité
Taille: 100ug, 0.5 mg/ml	Identification du gène (NCBI): 546644	CloneNo.: 1A8
Hôte: Rat	Nom complet: Lymphocyte antigen 6 complex, locus G	Excitation/Emission maxima wavelengths: 494 nm / 520 nm
Isotype: IgG2a, kappa		

## Applications

Applications testées:  
FC  
Spécificité de l'espèce:  
souris

## Informations générales

Ly-6G (lymphocyte antigen 6 complex, locus G), also known as Gr-1, is a 21-25 kDa, glycosylphosphatidylinositol-anchored protein expressed on myeloid lineage cells in mouse bone marrow (PMID: 8360469). The expression of Ly-6G increases on neutrophils as they differentiate from immature cells in the bone marrow to mature cells in the blood and spleen (PMID: 8890901). Antibodies targeting Ly6G (RB6-8C5 or 1A8) are commonly used in studies aimed at identifying the role of neutrophils (PMID: 23543767). The 1A8 mAb is specific for Ly-6G (PMID: 8360469).

## Stockage

Stockage:  
Store at 2-8°C. Avoid exposure to light. Stable for one year after shipment.  
Tampon de stockage:  
Tampon à base de phosphate avec azoture de sodium à 0,09 % et gélatine à 0,1 %, pH 7,2.

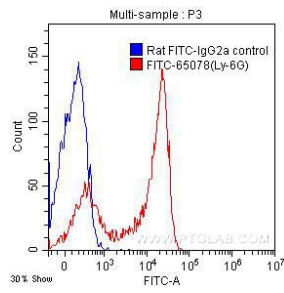
For technical support and original validation data for this product please contact:

T: 1 (888) 4PTGLAB (1-888-478-4522) (toll free  
in USA), or 1(312) 455-8498 (outside USA)

E: [proteintech@ptglab.com](mailto:proteintech@ptglab.com)  
W: [ptglab.com](http://ptglab.com)

This product is exclusively available under Proteintech Group brand and is not available to purchase from any other manufacturer.

## Données de validation sélectionnées



1X10<sup>6</sup> C57BL/6 mouse bone marrow cells were surface stained with 0.20 ug FITC-Anti-Mouse Ly-6G (FITC-65078, clone 1A8) (red) or 0.20 ug FITC-rat IgG2a isotype control (blue). Cells were not fixed.