

À des fins de recherche uniquement

# Anticorps Monoclonal anti-CD28

Numéro de catalogue: FITC-65099



## Informations de base

Numéro de catalogue: FITC-65099	Numéro d'acquisition GenBank: BC093698	Méthode de purification: Purification par affinité
Taille: 100 tests, 5 µl/test	Identification du gène (NCBI): 940	CloneNo.: CD28.2
Hôte: Mouse	Nom complet: CD28 molecule	Excitation/Emission maxima wavelengths: 495 nm / 524 nm
Isotype: IgG1, kappa	MW calculé: 220 aa, 25 kDa	

## Applications

Applications testées:  
FC  
Spécificité de l'espèce:  
Humain

## Informations générales

CD28 (T-cell-specific surface glycoprotein CD28), also known as T44 and Tp44, is a 44 kD disulfide-linked homodimeric type I glycoprotein (PMID: 2162180). It is a member of the immunoglobulin superfamily and is expressed on most T lineage cells, NK cell subsets, and plasma cells (PMID: 2162180, 8386518). CD28 may affect in vivo immune responses by functioning both as a cell adhesion molecule linking B and T lymphocytes and as the surface component of a novel signal transduction pathway (PMID: 2162180, 3021470). CD28 binds both CD80 and CD86 with a highly conserved motif MYPPY in the CDR3-like loop (PMID: 15696168, 7964482). CD28 is considered a major co-stimulatory molecule, inducing T lymphocyte activation and IL-2 synthesis, and preventing cell death (PMID: 1348520).

## Stockage

Stockage:  
Store at 2-8°C. Avoid exposure to light. Stable for one year after shipment.  
Tampon de stockage:  
PBS with 0.09% sodium azide and 0.5% BSA.

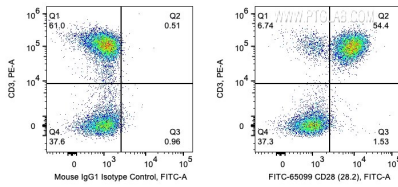
For technical support and original validation data for this product please contact:

T: 1 (888) 4PTGLAB (1-888-478-4522) (toll free  
in USA), or 1(312) 455-8498 (outside USA)

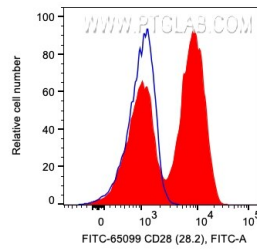
E: [proteintech@ptglab.com](mailto:proteintech@ptglab.com)  
W: [ptglab.com](http://ptglab.com)

This product is exclusively available under Proteintech Group brand and is not available to purchase from any other manufacturer.

## Données de validation sélectionnées



1X10<sup>6</sup> human PBMCs were surface co-stained with PE Anti-Human CD3 and 5 ul FITC Plus Anti-Human CD28 (FITC-65099, Clone: CD28.2) or Mouse IgG1 Isotype Control. Cells were not fixed. Lymphocytes were gated.



1X10<sup>6</sup> human PBMCs were surface stained with 5 ul FITC Plus Anti-Human CD28 (FITC-65099, Clone: CD28.2) or Mouse IgG1 Isotype Control. Cells were not fixed. Lymphocytes were gated.