

À des fins de recherche uniquement

# Anticorps Monoclonal anti-CD25

Numéro de catalogue: FITC-65137

1 Publications



## Informations de base

Numéro de catalogue:

FITC-65137

Taille:

100ug, 0.5 mg/ml

Hôte:

Rat

Isotype:

IgG1, lambda

Numéro d'acquisition GenBank:

BC114437

Identification du gène (NCBI):

16184

Nom complet:

interleukin 2 receptor, alpha chain

Méthode de purification:

Purification par affinité

CloneNo.:

PC61.5

Excitation/Emission maxima  
wavelengths:

495 nm / 524 nm

## Applications

Applications testées:

FC

Demandes citées:

FC

Spécificité de l'espèce:

souris

Espèces citées:

souris

## Informations générales

Proliferation of T lymphocytes is triggered by the interaction of IL-2 with its specific receptor following T lymphocyte activation. The receptor for IL-2 has three forms, generated by different combinations of three different proteins, the alpha chain (IL-2R alpha), the beta chain (IL-2R beta), and the gamma chain (IL-2R gamma) (PMID: 8476561). IL-2R alpha (also known as CD25) is a type I transmembrane protein present on activated T cells, activated B cells, some thymocytes, myeloid precursors, and oligodendrocytes. CD25 is also found on natural CD4<sup>+</sup>Foxp3<sup>+</sup> Treg cells (PMID: 22585674).

## Publications notables

Autrice	Pubmed ID	Journal	Application
Li Wu	35344716	Phytomedicine	FC

## Stockage

Stockage:

Store at 2-8°C. Avoid exposure to light. Stable for one year after shipment.

Tampon de stockage:

PBS with 0.09% sodium azide.

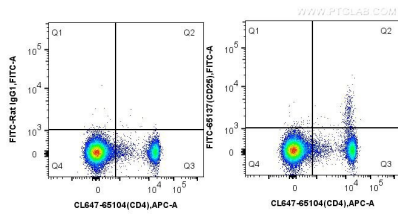
For technical support and original validation data for this product please contact:

T: 1 (888) 4PTGLAB (1-888-478-4522) (toll free  
in USA), or 1(312) 455-8498 (outside USA)

E: [proteintech@ptglab.com](mailto:proteintech@ptglab.com)  
W: [ptglab.com](http://ptglab.com)

This product is exclusively available under Proteintech Group brand and is not available to purchase from any other manufacturer.

## Données de validation sélectionnées



1X10<sup>6</sup> mouse splenocytes were surface stained with CoraLite® Plus 647 Anti-Mouse CD4 (GK1.5) (CL647-65104, Clone: GK1.5) and 0.13 ug FITC Plus Rat IgG1 isotype control (left) or 0.13 ug FITC Plus Anti-Mouse CD25 (FITC-65137, Clone: PC61.5) (right). Cells were not fixed.