

À des fins de recherche uniquement

Anticorps Monoclonal anti-CD19

Numéro de catalogue: FITC-65145



Informations de base

Numéro de catalogue: FITC-65145	Numéro d'acquisition GenBank: BC006338	Méthode de purification: Purification par affinité
Taille: 100tests , 5 µl(0.125µg)/test	Identification du gène (NCBI): 930	CloneNo.: SJ25C1
Hôte: Mouse	Nom complet: CD19 molecule	Excitation/Emission maxima wavelengths: 494 nm / 520 nm
Isotype: IgG1	MW calculé 556 aa, 61 kDa	

Applications

Applications testées:
FC
Spécificité de l'espèce:
Humain

Informations générales

CD19 is a 95 kDa type I transmembrane glycoprotein belonging to the immunoglobulin superfamily (PMID: 2472450). It is expressed by B cells and follicular dendritic cells. CD19 is up-regulated at the step of B-lineage commitment during the differentiation of the hematopoietic stem cell, it remains on during subsequent stages of differentiation until finally down-regulated during terminal differentiation into plasma cells (PMID: 8528044). CD19 is involved in B cell development, activation and differentiation. It is the dominant component for the signaling complex on B cells that includes CD21 (CR2), CD81 (TAPA-1) and CD225 and acts as a critical co-receptor for BCR signal transduction (PMID: 23210908).

Stockage

Stockage:
Stocker à une température comprise entre 2 °C et 8 °C. Éviter toute exposition à la lumière.
Tampon de stockage:
Tampon à base de phosphate avec azoture de sodium à 0,09 % et gélatine à 0,1 %, pH 7,2.

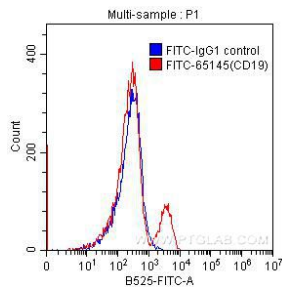
For technical support and original validation data for this product please contact:

T: 1 (888) 4PTGLAB (1-888-478-4522) (toll free
in USA), or 1(312) 455-8498 (outside USA)

E: proteintech@ptglab.com
W: ptglab.com

This product is exclusively available under Proteintech Group brand and is not available to purchase from any other manufacturer.

Données de validation sélectionnées



1×10^6 human peripheral blood lymphocytes were surface stained with 0.125 μ g FITC-anti-human CD19 (FITC-65145, clone SJ25C1) (red) or 0.125 μ g FITC-mouse IgG1 isotype control (blue). Cells were not fixed.