

À des fins de recherche uniquement

Anticorps Monoclonal anti-CD146

Numéro de catalogue: FITC-65181



Informations de base

Numéro de catalogue:

FITC-65181

Taille:

100 tests, 5 µl/test

Hôte:

Mouse

Isotype:

IgG1, kappa

Numéro d'acquisition GenBank:

BC056418

Identification du gène (NCBI):

4162

Nom complet:

melanoma cell adhesion molecule

MW calculé

646 aa, 72 kDa

Méthode de purification:

Purification par affinité

CloneNo.:

P1H12

Excitation/Emission maxima

wavelengths:

495 nm / 524 nm

Applications

Applications testées:

FC

Spécificité de l'espèce:

canin, Humain, Lapin, souris

Informations générales

Stockage

Stockage:

Store at 2-8°C. Avoid exposure to light. Stable for one year after shipment.

Tampon de stockage:

PBS with 0.09% sodium azide and 0.5% BSA.

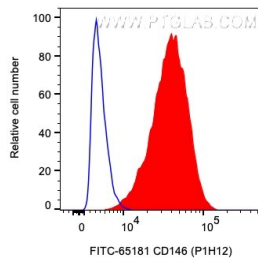
For technical support and original validation data for this product please contact:

T: 1 (888) 4PTGLAB (1-888-478-4522) (toll free
in USA), or 1(312) 455-8498 (outside USA)

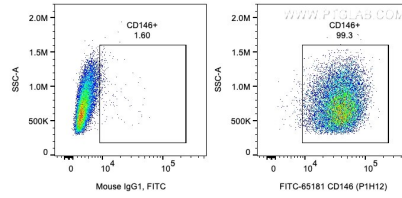
E: proteintech@ptglab.com
W: ptglab.com

This product is exclusively available under Proteintech Group brand and is not available to purchase from any other manufacturer.

Données de validation sélectionnées



1×10^6 A375 cells were surface stained with 5 μ l FITC Plus Anti-Human CD146 (FITC-65181, Clone: P1H12) (red) or Mouse IgG1 Isotype Control. Cells were not fixed.



1×10^6 A375 cells were surface stained with 5 μ l FITC Plus Anti-Human CD146 (FITC-65181, Clone: P1H12) or Mouse IgG1 Isotype Control. Cells were not fixed.