

À des fins de recherche uniquement

Anticorps Monoclonal anti-HLA-DR

Numéro de catalogue: FITC-65218

1 Publications



Informations de base

Numéro de catalogue:

FITC-65218

Taille:

100tests , 5 µl/test

Hôte:

Mouse

Isotype:

IgG2a, kappa

Numéro d'acquisition GenBank:

BC032350

Identification du gène (NCBI):

3122

Nom complet:

major histocompatibility complex,
class II, DR alpha

MW calculé

254 aa, 29 kDa

Méthode de purification:

Purification par protéine A

CloneNo.:

L243

Excitation/Emission maxima
wavelengths:

495 nm / 524 nm

Applications

Applications testées:

FC

Demandes citées:

FC

Spécificité de l'espèce:

Humain

Espèces citées:

Humain

Informations générales

Publications notables

Autrice	Pubmed ID	Journal	Application
Qingxi Qu	36359787	Cells	FC

Stockage

Stockage:

Store at 2-8°C. Avoid exposure to light. Stable for one year after shipment.

Tampon de stockage:

PBS with 0.09% sodium azide and 0.5% BSA.

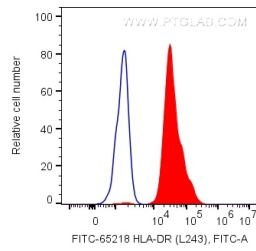
For technical support and original validation data for this product please contact:

T: 1 (888) 4PTGLAB (1-888-478-4522) (toll free
in USA), or 1(312) 455-8498 (outside USA)

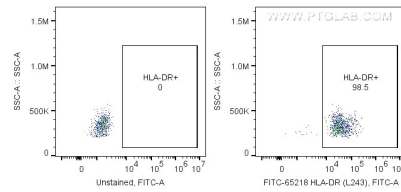
E: proteintech@ptglab.com
W: ptglab.com

This product is exclusively available under Proteintech Group brand and is not available to purchase from any other manufacturer.

Données de validation sélectionnées



1X10⁶ human PBMCs were surface stained with 5 ul FITC Plus Anti-Human HLA-DR (FITC-65218, Clone: L243). Cells were not fixed. Monocytes were gated.



1X10⁶ human PBMCs were surface stained with 5 ul FITC Plus Anti-Human HLA-DRA (FITC-65218, Clone:L243). Cells were not fixed .