

À des fins de recherche uniquement

# Anticorps Monoclonal anti-CD45RA

Numéro de catalogue: FITC-65226



## Informations de base

Numéro de catalogue:

FITC-65226

Taille:

100tests, 5 µl/test

Hôte:

Mouse

Isotype:

IgG1, kappa

Numéro d'acquisition GenBank:

BC014239

Identification du gène (NCBI):

5788

Nom complet:

protein tyrosine phosphatase,  
receptor type, C

MW calculé

1304 aa, 147 kDa

Méthode de purification:

Purification par affinité

CloneNo.:

F8-11-13

Excitation/Emission maxima  
wavelengths:

495 nm / 524 nm

## Applications

Applications testées:

FC

Spécificité de l'espèce:

Humain

## Informations générales

CD45, also known as protein tyrosine phosphatase, receptor type C, is a type I transmembrane protein expressed on the surface of all haematopoietic cells with the exception of erythrocytes and platelets (PMID: 3489673; 28615666). CD45 is a pan-haematopoietic cell marker and has been shown to be essential for T- and B-cell activation and signalling (PMID: 9429890; 16378097). CD45 exists as multiple isoforms due to alternative splicing of three exons (4, 5, and 6, designated A, B, and C) in the extracellular domain (PMID: 12414720). CD45RA is expressed on naïve T cells, B cells, and monocytes (PMID: 1830500; 14687231).

## Stockage

Stockage:

Store at 2-8°C. Avoid exposure to light. Stable for one year after shipment.

Tampon de stockage:

PBS with 0.09% sodium azide and 0.5% BSA.

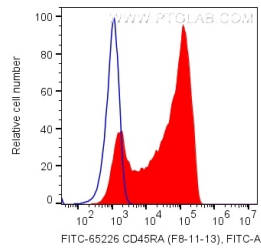
For technical support and original validation data for this product please contact:

T: 1 (888) 4PTGLAB (1-888-478-4522) (toll free  
in USA), or 1(312) 455-8498 (outside USA)

E: [proteintech@ptglab.com](mailto:proteintech@ptglab.com)  
W: [ptglab.com](http://ptglab.com)

This product is exclusively available under Proteintech Group brand and is not available to purchase from any other manufacturer.

## Données de validation sélectionnées



1X10<sup>6</sup> human PBMCs were surface stained with 5 ul FITC Plus Anti-Human CD45RA (FITC-65226, Clone: F8-11-13), or Mouse IgG1 Isotype Control. Cells were not fixed. Lymphocytes were gated.