

À des fins de recherche uniquement

Anticorps Monoclonal anti-CD31

Numéro de catalogue: FITC-65268



Informations de base

Numéro de catalogue:

FITC-65268

Taille:

100 tests, 5 µl/test

Hôte:

Mouse

Isotype:

IgG1, kappa

Numéro d'acquisition GenBank:

BC022512

Identification du gène (NCBI):

5175

Nom complet:

platelet/endothelial cell adhesion molecule

MW calculé

83 kDa

Méthode de purification:

Purification par affinité

CloneNo.:

WM-59

Excitation/Emission maxima wavelengths:

495 nm / 524 nm

Applications

Applications testées:

FC

Spécificité de l'espèce:

Humain

Informations générales

CD31, also known as PECAM1 (Platelet endothelial cell adhesion molecule), is a member of the immunoglobulin gene superfamily of cell adhesion molecules. CD31 is a transmembrane glycoprotein that is highly expressed on the surface of the endothelium, making up a large portion of its intracellular junctions. It is also present on the surface of hematopoietic cells and immune cells including platelets, monocytes, neutrophils, natural killer cells, megakaryocytes and some types of T-cell (PMID: 9011572). As well as its role in cell-cell adhesion, CD31 functions as a signaling receptor, and is involved in important physiological events such as nitric oxide production, regulation of T-cell immunity and tolerance, leukocyte transendothelial migration and inflammation and angiogenesis (PMID: 21183735; 20978210; 17872453; 20634489).

Stockage

Stockage:

Store at 2-8°C. Avoid exposure to light. Stable for one year after shipment.

Tampon de stockage:

PBS with 0.09% sodium azide and 0.5% BSA.

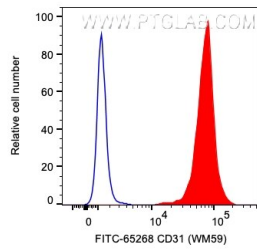
For technical support and original validation data for this product please contact:

T: 1 (888) 4PTGLAB (1-888-478-4522) (toll free in USA), or 1(312) 455-8498 (outside USA)

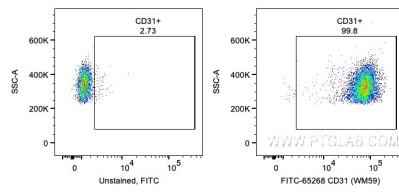
E: proteintech@ptglab.com
W: ptglab.com

This product is exclusively available under Proteintech Group brand and is not available to purchase from any other manufacturer.

Données de validation sélectionnées



1X10⁶ human PBMCs were surface stained with 5 ul FITC Plus Anti-Human CD31 (FITC-65268, Clone: WM-59) (red) or unstained. Cells were not fixed. Monocytes were gated.



1X10⁶ human PBMCs were surface stained with 5 ul FITC Plus Anti-Human CD31 (FITC-65268, Clone: WM-59) or unstained. Cells were not fixed. Monocytes were gated.