

À des fins de recherche uniquement

# Anticorps Monoclonal anti-IgG2a isotype control



Numéro de catalogue: FITC-66360-2

## Informations de base

Numéro de catalogue:

FITC-66360-2

Taille:

100ug, Concentration: 200 µg/ml by  
Nanodrop;

Hôte:

Mouse

Isotype:

IgG2a

Numéro d'acquisition GenBank:

Identification du gène (NCBI):

Nom complet:

Méthode de purification:

Purification par protéine A

CloneNo.:

11A1B2

Excitation/Emission maxima  
wavelengths:

495 nm / 524 nm

## Applications

Applications testées:

FC

Spécificité de l'espèce:

Megathura crenulata

## Informations générales

This antibody is used as the isotype control of mouse IgG2a. It can be used as the isotype control in Flow Cytometry and other experiments. The immunogen of this antibody is Keyhole Limpet Hemocyanin (KLH).

## Stockage

Stockage:

Store at 2-8°C. Avoid exposure to light. Stable for one year after shipment.

Tampon de stockage:

PBS with 0.09% sodium azide and 0.5% BSA.

\*\*\* Les 20ul contiennent 0,1% de BSA.

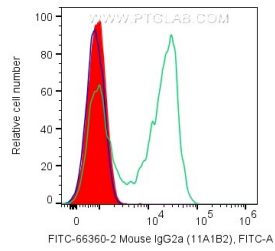
For technical support and original validation data for this product please contact:

T: 1 (888) 4PTGLAB (1-888-478-4522) (toll free  
in USA), or 1(312) 455-8498 (outside USA)

E: [proteintech@ptglab.com](mailto:proteintech@ptglab.com)  
W: [ptglab.com](http://ptglab.com)

This product is exclusively available under Proteintech Group brand and is not available to purchase from any other manufacturer.

## Données de validation sélectionnées



1X10<sup>6</sup> human PBMCs were surface stained with 0.2 ug FITC Plus Mouse IgG2a isotype control (FITC-66360-2, Clone:11A1B2) (filled red), Anti-Human CD5 (green), or unstained (blue). Cells were not fixed. Lymphocytes were gated.