

À des fins de recherche uniquement

Anticorps Monoclonal anti-GAPDH

Numéro de catalogue: HRP-60004 **509 Publications**



Informations de base

Numéro de catalogue: HRP-60004	Numéro d'acquisition GenBank: BC004109	Méthode de purification: Purification par affinité contre l'antigène
Taille: 100ul , Concentration: 1000 µg/ml by Nanodrop and 1000 µg/ml by Bradford method using BSA as the standard;	Identification du gène (NCBI): 2597	CloneNo.: 1E6D9
Hôte: Mouse	Nom complet: glyceraldehyde-3-phosphate dehydrogenase	Dilutions recommandées: WB 1:5000-1:50000
Isotype: IgG2b	MW calculé: 36 kDa	
	MW observés: 36 kDa	

Applications

Applications testées: WB	Contrôles positifs: WB : cellules HeLa, cellules HEK-293, cellules HepG2
Demandes citées: IF, IHC, IP, WB	
Spécificité de l'espèce: Humain, plante, poisson-zèbre, rat, souris	
Espèces citées: Humain, Lapin, porc, poulet, rat, souris, Hamster, abeilles, opossum	

Informations générales

Glyceraldehyde-3-phosphate dehydrogenase (GAPDH) catalyzes the phosphorylation of glyceraldehyde-3-phosphate during glycolysis. GAPDH participates in nuclear events including transcription, binding RNA, RNA transportation, DNA replication, DNA repair and apoptosis. Being stably and constitutively expressed at high levels in most tissues and cells, GAPDH is considered a housekeeping protein. It is widely used as a control for RT-PCR and also loading control in electrophoresis and Western blotting. GAPDH is normally expressed in cellular cytoplasm or membrane, but can occasionally translocate to the nucleus after the addition of post-translational modifications such as S-nitrosylation. This antibody is raised against full length GAPDH of human origin. It can recognize the 36 kDa GAPDH protein in most cells/tissues. In addition, a band below 36 kDa can always be detected as the isoform or spliced product of GAPDH (PMID: 23885286, 23877755, 19368702). Please note that some physiological factors, such as hypoxia and diabetes, increase GAPDH expression in certain cell types.

Publications notables

Autrice	Pubmed ID	Journal	Application
Jiawei Hao	36126167	Autophagy	WB
Dong Yu	36183792	Brain Res	WB
Victoria L Messerschmidt	34651022	Front Cardiovasc Med	WB

Stockage

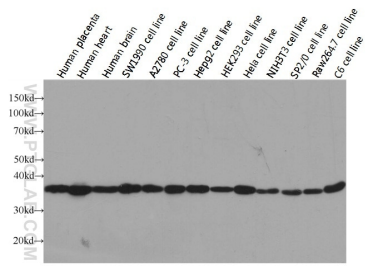
Stockage:
Stocker à -20 °C. Éviter toute exposition à la lumière. Stable pendant un an après l'expédition.
Tampon de stockage:
PBS avec glycérol à 50 %, Proclin300 à 0,05 % et BSA à 0,5 %, pH 7,3.
L'aliquotage n'est pas nécessaire pour le stockage à -20C

***** Les 20ul contiennent 0,1% de BSA.**

For technical support and original validation data for this product please contact:
T: 1 (888) 4PTGLAB (1-888-478-4522) (toll free in USA), or 1(312) 455-8498 (outside USA)
E: proteintech@ptglab.com
W: ptglab.com

This product is exclusively available under Proteintech Group brand and is not available to purchase from any other manufacturer.

Données de validation sélectionnées



Western blot analysis of GAPDH in various tissues and cell lines using Proteintech antibody HRP-60004 at a dilution of 1:10000.