

À des fins de recherche uniquement

Anticorps Monoclonal anti-Heavy chain of Rabbit IgG



Numéro de catalogue: HRP-66467

1 Publications

Informations de base

Numéro de catalogue:

HRP-66467

Numéro d'acquisition GenBank:

Identification du gène (NCBI):

Méthode de purification:

Purification par protéine G

Taille:

100ul , Concentration: 1000 µg/ml by Nanodrop;

Nom complet:

CloneNo.:

1C9A5

Hôte:

Mouse

Dilutions recommandées:

WB 1:1000-1:5000

Isotype:

IgG1

Applications

Applications testées:

WB

Contrôles positifs:

WB : cellules Jurkat, cellules HeLa, tissu sérique de lapin

Demandes citées:

WB

Spécificité de l'espèce:

Lapin

Informations générales

This antibody specifically recognizes the heavy chain of Rabbit IgG. It can't detect the The heavy chain of other species. This antibody can be used as the secondary antibody which is specific to the heavy chain of Rabbit IgG.

Publications notables

Autrice	Pubmed ID	Journal	Application
Jose Galaz	37121539	Transl Res	WB

Stockage

Stockage:

Stocker à -20 °C. Éviter toute exposition à la lumière. Stable pendant un an après l'expédition.

Tampon de stockage:

PBS avec glycérol à 50 %, Proclin300 à 0,05 % et BSA à 0,5 %, pH 7,3.

L'aliquotage n'est pas nécessaire pour le stockage à -20C

*** Les 20ul contiennent 0,1% de BSA.

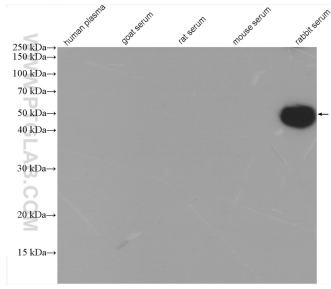
For technical support and original validation data for this product please contact:

T: 1 (888) 4PTGLAB (1-888-478-4522) (toll free in USA), or 1(312) 455-8498 (outside USA)

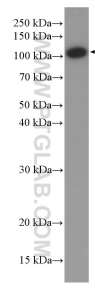
E: proteintech@ptglab.com
W: ptglab.com

This product is exclusively available under Proteintech Group brand and is not available to purchase from any other manufacturer.

Données de validation sélectionnées



Various serum/plasma lysate were subjected to SDS PAGE followed by western blot with HRP-66467 (Heavy chain of Rabbit IgG antibody) at dilution of 1:15000 incubated at room temperature for 1.5 hours.



Jurkat cells were subjected to SDS PAGE followed by western blot with 17170-1-AP (IARS2 antibody) at dilution of 1:1000 incubated at room temperature for 1.5 hours. HRP-66467 (Heavy chain of Rabbit IgG antibody) as secondary antibody with dilution 1:15000.