

À des fins de recherche uniquement

# Anticorps Monoclonal anti-CD3ε

Numéro de catalogue: PE-65060



## Informations de base

<b>Numéro de catalogue:</b> PE-65060	<b>Numéro d'acquisition GenBank:</b> BC098236	<b>Méthode de purification:</b> Purification par affinité
<b>Taille:</b> 100ug, 0.1 mg/ml	<b>Identification du gène (NCBI):</b> 12501	<b>CloneNo.:</b> 145-2C11
<b>Hôte:</b> Hamster	<b>Nom complet:</b> CD3 antigen, epsilon polypeptide	<b>Excitation/Emission maxima wavelengths:</b> 496 nm, 565 nm / 578 nm
<b>Isotype:</b> IgG		

## Applications

**Applications testées:**  
FC

**Spécificité de l'espèce:**  
souris

## Informations générales

CD3 is a multimeric protein associated with the T-cell receptor (TCR) to form a complex involved in antigen recognition and signal transduction (PMID: 15885124). CD3 is composed of CD3γ, δ, ε, and ζ chains (PMID: 1826255). It is expressed by thymocytes in a developmentally regulated manner, T cells, and some NK cells (PMID: 3289580). The TCR recognizes antigens bound to major histocompatibility complex (MHC) molecules. TCR-mediated peptide-MHC recognition is transmitted to the CD3 complex, leading to the intracellular signal transduction (PMID: 11985657).

## Stockage

**Stockage:**  
Stocker à une température comprise entre 2 °C et 8 °C. Éviter toute exposition à la lumière.

**Tampon de stockage:**  
PBS avec azoture de sodium à 0,1 % et un agent stabilisant.

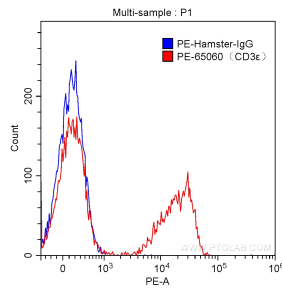
For technical support and original validation data for this product please contact:

T: 1 (888) 4PTGLAB (1-888-478-4522) (toll free in USA), or 1(312) 455-8498 (outside USA)

E: [proteintech@ptglab.com](mailto:proteintech@ptglab.com)  
W: [ptglab.com](http://ptglab.com)

**This product is exclusively available under Proteintech Group brand and is not available to purchase from any other manufacturer.**

## Données de validation sélectionnées



1X10<sup>6</sup> C57BL/6 mouse splenocytes were surface stained with 0.10 ug PE Anti-Mouse CD3ε (PE-65060, Clone:145-2C11) (red) or 0.10 ug isotype control antibody (blue). Cells were not fixed.