

À des fins de recherche uniquement

Anticorps Monoclonal anti-Ly-6G

Numéro de catalogue: PE-65078



Informations de base

Numéro de catalogue: PE-65078	Numéro d'acquisition GenBank: X70920	Méthode de purification: Purification par affinité
Taille: 100ug, 0.2 mg/ml	Identification du gène (NCBI): 546644	CloneNo.: 1A8
Hôte: Rat	Nom complet: Lymphocyte antigen 6 complex, locus G	Excitation/Emission maxima wavelengths: 496 nm, 565 nm / 578 nm
Isotype: IgG2a, kappa		

Applications

Applications testées:
FC
Spécificité de l'espèce:
souris

Informations générales

Ly-6G (lymphocyte antigen 6 complex, locus G), also known as Gr-1, is a 21-25 kDa, glycosylphosphatidylinositol-anchored protein expressed on myeloid lineage cells in mouse bone marrow (PMID: 8360469). The expression of Ly-6G increases on neutrophils as they differentiate from immature cells in the bone marrow to mature cells in the blood and spleen (PMID: 8890901). Antibodies targeting Ly6G (RB6-8C5 or 1A8) are commonly used in studies aimed at identifying the role of neutrophils (PMID: 23543767). The 1A8 mAb is specific for Ly-6G (PMID: 8360469).

Stockage

Stockage:
Store at 2-8°C. Avoid exposure to light. Stable for one year after shipment.
Tampon de stockage:
Tampon à base de phosphate avec azoture de sodium à 0,09 % et gélatine à 0,1 %, pH 7,2.

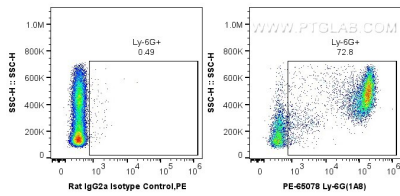
For technical support and original validation data for this product please contact:

T: 1 (888) 4PTGLAB (1-888-478-4522) (toll free
in USA), or 1(312) 455-8498 (outside USA)

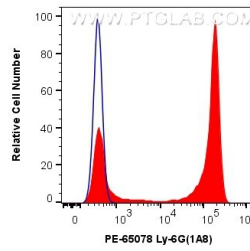
E: proteintech@ptglab.com
W: ptglab.com

This product is exclusively available under Proteintech Group brand and is not available to purchase from any other manufacturer.

Données de validation sélectionnées



1X10⁶ BALB/c mouse bone marrow cells were surface stained with 0.5 ug PE Anti-Mouse Ly-6G (PE-65078, Clone: 1A8) or 0.5 ug PE Rat IgG2a Isotype Control (2A3) (PE-65209, Clone: 2A3). Cells were not fixed.



1X10⁶ BALB/c mouse bone marrow cells were surface stained with 0.5 ug PE Anti-Mouse Ly-6G (PE-65078, Clone: 1A8) (red), or 0.5 ug PE Rat IgG2a Isotype Control (2A3) (PE-65209, Clone: 2A3) (blue). Cells were not fixed.