

À des fins de recherche uniquement

Anticorps Monoclonal anti-CD45.1

Numéro de catalogue: PE-65092



Informations de base

Numéro de catalogue:

PE-65092

Taille:

100ug, 0.2 mg/ml

Hôte:

Mouse

Isotype:

IgG2a

Numéro d'acquisition GenBank:

BC028512

Identification du gène (NCBI):

19264

Nom complet:

protein tyrosine phosphatase,
receptor type, C

Méthode de purification:

Purification par affinité

CloneNo.:

A20

Excitation/Emission maxima
wavelengths:

496 nm, 565 nm / 578 nm

Applications

Applications testées:

FC

Spécificité de l'espèce:

souris

Informations générales

CD45, also known as protein tyrosine phosphatase, receptor type C, is a type I transmembrane protein expressed on the surface of all haematopoietic cells with the exception of erythrocytes and platelets (PMID: 3489673; 28615666). CD45 is a pan-haematopoietic cell marker and has been shown to be essential for T- and B-cell activation and signalling (PMID: 9429890; 16378097). Allelic variants of mouse CD45, CD45.1 (Ly5.1) and CD45.2 (Ly5.1), have been established as a marker system to track haematopoietic cells following congenic mouse bone marrow transplants (PMID: 28615666). CD45.2 is the common form and is expressed by most of the established strains, while CD45.1 is found in only a few like the SJL mouse strain (PMID: 3489673).

Stockage

Stockage:

Stocker à une température comprise entre 2 °C et 8 °C. Éviter toute exposition à la lumière.

Tampon de stockage:

Tampon à base de phosphate avec azoture de sodium à 0,09 % et gélatine à 0,1 %, pH 7,2.

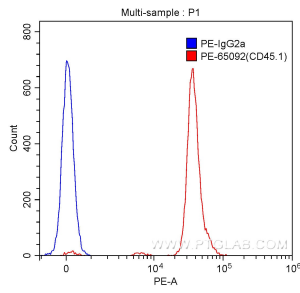
For technical support and original validation data for this product please contact:

T: 1 (888) 4PTGLAB (1-888-478-4522) (toll free
in USA), or 1(312) 455-8498 (outside USA)

E: proteintech@ptglab.com
W: ptglab.com

This product is exclusively available under Proteintech Group brand and is not available to purchase from any other manufacturer.

Données de validation sélectionnées



1×10^6 SJL mouse splenocytes were surface stained with 0.20 μ g PE-Anti-Mouse CD45.1 (PE-65092, clone A20) (red) or 0.20 μ g PE-mouse IgG2a isotype control (blue). Cells were not fixed.