

À des fins de recherche uniquement

# Anticorps Monoclonal anti-CD161

Numéro de catalogue: PE-65115



## Informations de base

Numéro de catalogue:

PE-65115

Taille:

100 tests, 5 µl/test

Hôte:

Mouse

Isotype:

IgG1, kappa

Numéro d'acquisition GenBank:

BC114516

Identification du gène (NCBI):

3820

Nom complet:

killer cell lectin-like receptor  
subfamily B, member 1

MW calculé

225 aa, 25 kDa

Méthode de purification:

Purification par affinité

CloneNo.:

HP-3G10

Excitation/Emission maxima  
wavelengths:

496 nm, 565 nm / 578 nm

## Applications

Applications testées:

FC

Spécificité de l'espèce:

Humain

## Informations générales

### Stockage

Stockage:

Store at 2-8°C. Avoid exposure to light. Stable for one year after shipment.

Tampon de stockage:

Tampon à base de phosphate avec azoture de sodium à 0,09 % et gélatine à 0,1 %, pH 7,2.

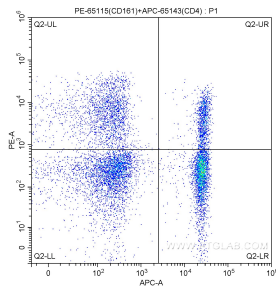
For technical support and original validation data for this product please contact:

T: 1 (888) 4PTGLAB (1-888-478-4522) (toll free  
in USA), or 1(312) 455-8498 (outside USA)

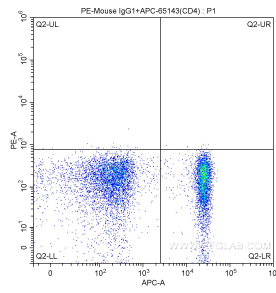
E: [proteintech@ptglab.com](mailto:proteintech@ptglab.com)  
W: [ptglab.com](http://ptglab.com)

This product is exclusively available under Proteintech Group brand and is not available to purchase from any other manufacturer.

## Données de validation sélectionnées



1X10<sup>6</sup> human peripheral blood lymphocytes were surface stained with 5.00 ul/test APC-Anti-Human CD4 (APC-65143, Clone:RPA-T4) and 5.00 ul/test PE-Anti-Human CD161 (PE-65115, Clone:HP-3G10). Cells were not fixed.



1X10<sup>6</sup> human peripheral blood lymphocytes were surface stained with 5.00 ul/test APC-Anti-Human CD4 (APC-65143, Clone: RPA-T4) and 0.50 ug PE-mouse IgG1 isotype control. Cells were not fixed.