

À des fins de recherche uniquement

# Anticorps Monoclonal anti-CD62L

Numéro de catalogue: **PE-65219**



## Informations de base

Numéro de catalogue:

PE-65219

Taille:

100ug , 0.2 mg/ml

Hôte:

Rat

Isotype:

IgG2a, kappa

Numéro d'acquisition GenBank:

BC052681

Identification du gène (NCBI):

20343

Nom complet:

selectin, lymphocyte

Méthode de purification:

Purification par affinité

CloneNo.:

MEL14

Excitation/Emission maxima  
wavelengths:

496 nm, 565 nm / 578 nm

## Applications

Applications testées:

FC

Spécificité de l'espèce:

souris

## Informations générales

CD62L, also known as L-selectin or SELP, is a member of the selectin family of adhesion molecules that also include CD62E (E-selectin) and CD62P (P-selectin) (PMID: 2663882, 2473156, 1382078). CD62L is a highly glycosylated protein of 95-105 kDa on neutrophils and 74 kDa on lymphocytes (PMID: 1382078; 1694883, 1695155). CD62L is expressed on the surface of most leukocytes, including lymphocytes, neutrophils, monocytes, eosinophils, hematopoietic progenitor cells, and immature thymocytes (PMID: 1694883, 1688580). It mediates the binding of lymphocytes to high endothelial venules (HEV) of peripheral lymph nodes through interactions with a constitutively expressed ligand, and is also involved in lymphocyte, neutrophil, and monocyte attachment to endothelium at sites of inflammation (PMID: 1382078).

## Stockage

Stockage:

Store at 2-8°C. Avoid exposure to light. Stable for one year after shipment.

Tampon de stockage:

PBS with 0.1% sodium azide and 0.5% BSA.

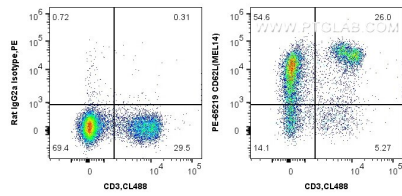
For technical support and original validation data for this product please contact:

T: 1 (888) 4PTGLAB (1-888-478-4522) (toll free  
in USA), or 1(312) 455-8498 (outside USA)

E: [proteintech@ptglab.com](mailto:proteintech@ptglab.com)  
W: [ptglab.com](http://ptglab.com)

This product is exclusively available under Proteintech Group brand and is not available to purchase from any other manufacturer.

## Données de validation sélectionnées



1X10<sup>6</sup> mouse splenocytes were surface co-stained with CoraLite® Plus 488 Anti-Mouse CD3 and 0.2 ug PE Anti-Mouse CD62L (PE-65219, Clone: MEL14) or 0.2 ug Isotype Control. Cells were not fixed.