



Antibodies and Immunoassays



TABLE OF CONTENTS

About Proteintech.....	3–4
Primary Antibodies.....	5–11
– Polyclonal Antibodies.....	5
– Monoclonal Antibodies.....	6
– Recombinant Antibodies.....	7
– Phospho-Specific Antibodies.....	8
– Loading Control Antibodies.....	9
– Isotype Control Antibodies.....	10
– Antibody Sampler Kits.....	11
Conjugated Antibodies.....	12–15
– CoraLite® Plus Conjugates.....	12
– FlexAble Antibody Labeling Kits.....	13
– Antibodies for Flow Cytometry.....	14
Secondary Antibodies.....	16–18
– Multi-rAb Recombinant Secondary Antibodies.....	16
– Conventional Secondary Antibodies.....	18
– Nano-Secondary® Reagents.....	18
Immunoassays.....	19–21
– ELISA Kits.....	19
– Authentikine™ ELISA Kits.....	19
– Immunohistochemistry Kits.....	20
– Magnetic Cell Separation Systems.....	21
Supporting Products.....	22–23
– For Western Blots.....	22
– For Immunohistochemistry.....	22
– For Flow Cytometry.....	23
Contact Us.....	24

PROTEINTECH GROUP:

For Scientists, by Scientists

Proteintech Group was founded in 2001 by a group of scientists who were actively engaged in NIH-funded research at the time. As a company founded by scientists, Proteintech Group recognizes the tireless efforts and sacrifices made by researchers to advance scientific discovery. Proteintech aims to match its' customers' dedication to research by providing high-quality, reliable reagents that contribute to reproducible results.

Award-winning Products



“ At the heart of our aspiration was a company for scientists by scientists; an antibody provider that would offer researchers the advantage—not investors. ”

— Dr. Jason Li, CEO and Founder

Global Locations



ANTIBODIES AND IMMUNOASSAYS: OUR FOUNDATION

From our bench to your bench

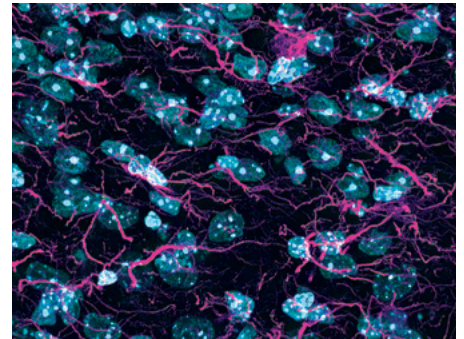
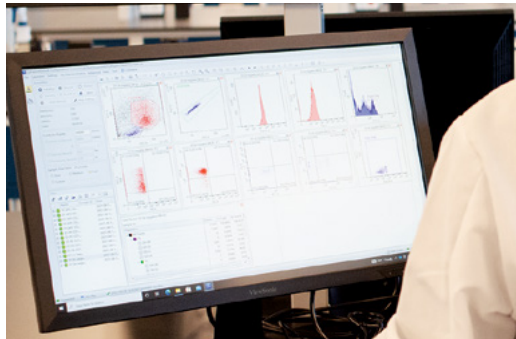
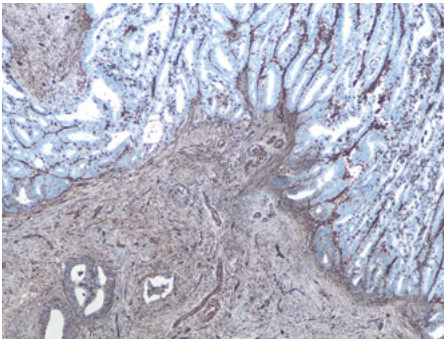
Proteintech offers products against 13,000+ different human proteins. Proteintech's founding aim was to manufacture an antibody to every human protein. Our portfolio currently covers two-thirds of the human proteome. We manufacture and validate our antibodies in-house, creating unparalleled quality and uninterrupted supply.

Antibody Applications

Western Blot (WB)
Immunohistochemistry (IHC)
Immunofluorescence (IF)
Immunoprecipitation (IP)
Flow Cytometry (FC)
Neutralization
ELISA

Immunoassays

IHC Kits
ELISA Kits
Antibody Labeling Kits
Cell Health and Proliferation Kits
Magnetic Cell Separation Systems



We offer...

- Extensive in-house validation
- Product specific protocols
- Next day shipping
- Product guarantee

Scan to learn
more about
Proteintech



Any species, any application

The Proteintech guarantee covers antibodies in any species and any application. If the antibody doesn't meet your expectations, you can receive a refund or replacement up to 6 months after purchase.

POLYCLONAL ANTIBODIES

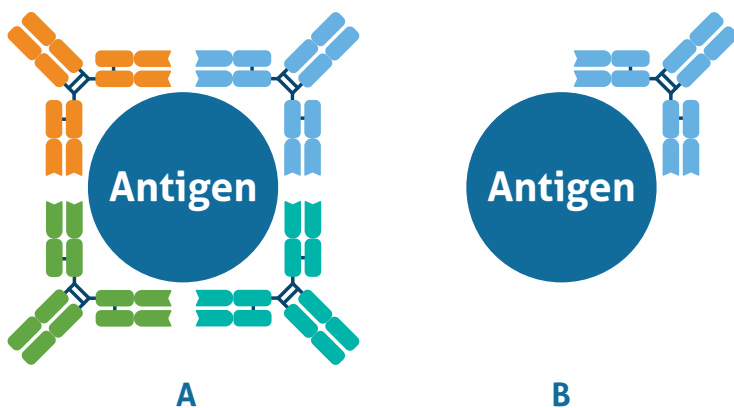


Polyclonal antibodies recognize multiple epitopes on the protein of interest and bind with high affinity. They are great for low-abundance targets, rare species, and mutated proteins. Proteintech's polyclonal antibodies are raised in rabbits, and 95% have whole protein immunogens which lead to superior performance over peptide immunogens.

Antibodies for every application

Proteintech antibodies are validated in-house in a variety of applications:

- Western Blot
- Immunohistochemistry
- Immunofluorescence
- Immunoprecipitation
- Flow Cytometry
- Neutralization
- ELISA

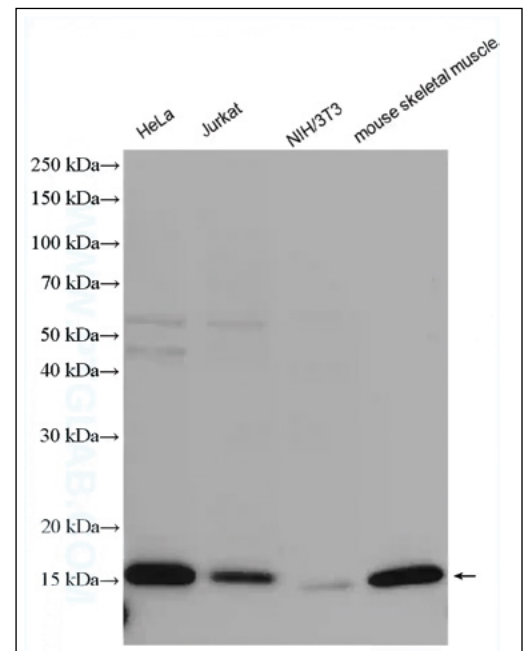


▲ Polyclonal antibodies bind to the same antigen, but different epitopes; and B) monoclonal antibodies bind to the same epitope on a target antigen.

Featured Product

COXIV Polyclonal Antibody

★★★★★ Scientist Reviews



▲ Various lysates analyzed by western blot with 11242-1-AP (COXIV antibody) at dilution of 1:10000.

Scan to
explore more



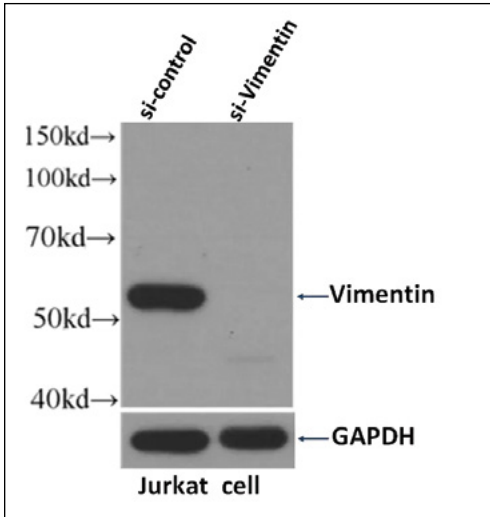
MONOCLONAL ANTIBODIES

Proteintech monoclonal antibodies are raised in mice and recognize a single epitope on the protein of interest, resulting in high specificity and low background. They are ideal for analyzing mid-high abundance targets.

KD/KO validated

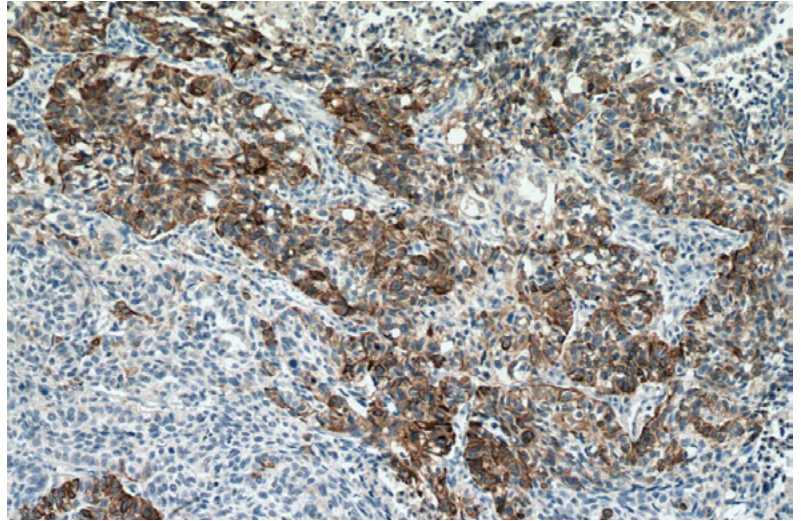
Anti-Vimentin Monoclonal Antibody

★★★★★ Scientist Reviews

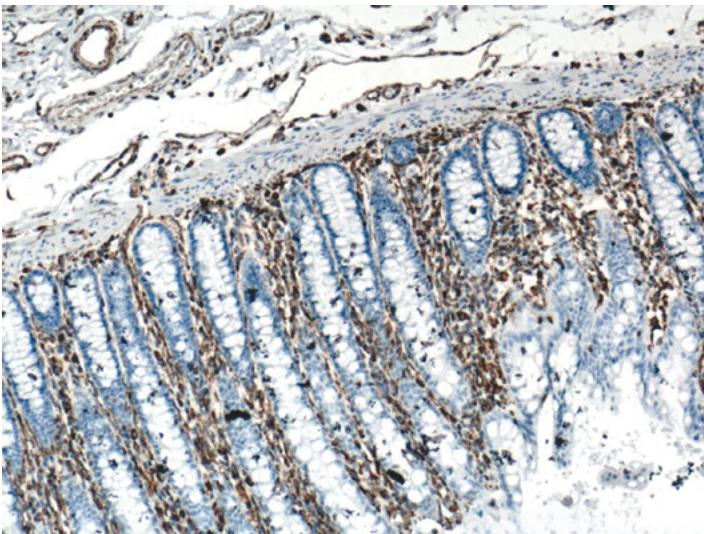


▲ Western blot analysis of Jurkat cells transfected with vimentin siRNA or control siRNA using anti-vimentin monoclonal antibody (60330-1-Ig).

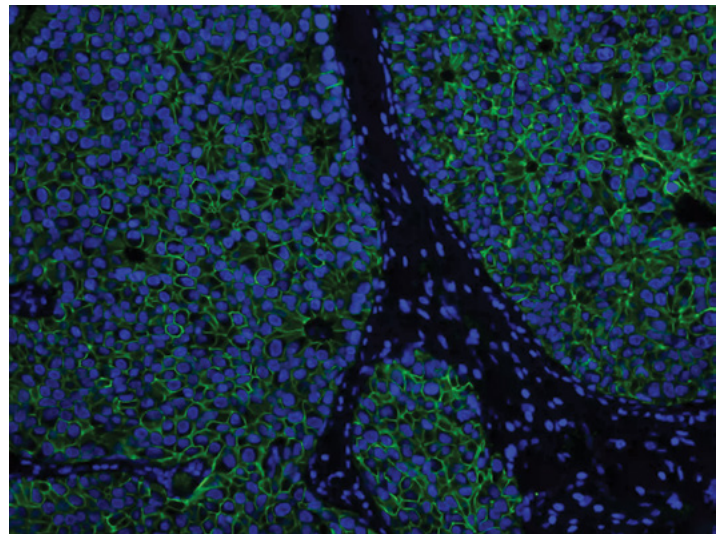
Anti-Cytokeratin 14 Monoclonal Antibody



▲ IHC analysis of FFPE human lung cancer tissue using anti-cytokeratin 14 monoclonal antibody (60320-1-Ig).

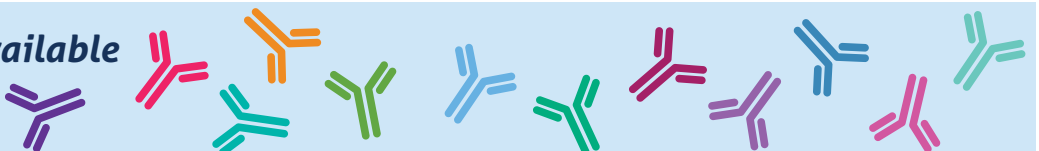


▲ IHC analysis of FFPE human colon tissue using anti-vimentin monoclonal antibody (60330-1-Ig).



▲ IF analysis of human breast cancer tissue using E-cadherin monoclonal antibody (60335-1-Ig) and CoraLite®488-Conjugated AffiniPure Goat Anti-Mouse IgG(H+L).

**Primary Antibodies available
in 20µl sample sizes**



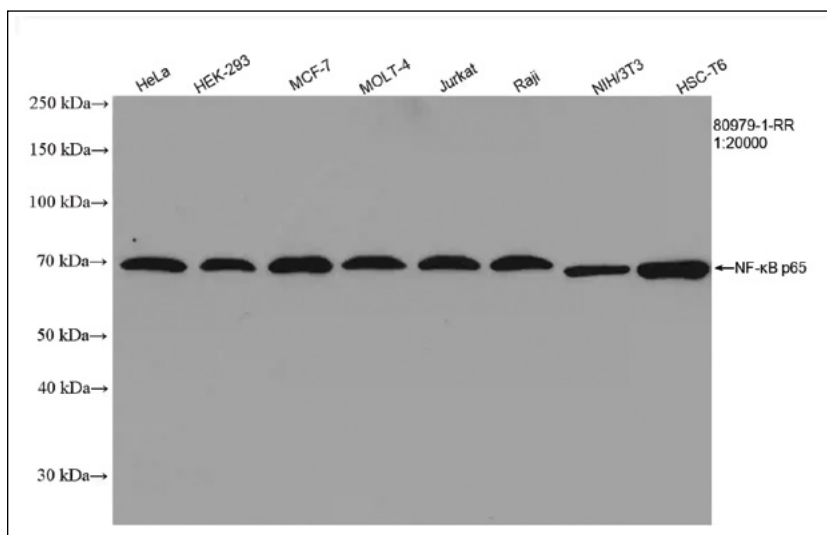
RECOMBINANT ANTIBODIES

Achieve reproducible results throughout your project

Recombinant antibodies are monoclonal antibodies generated using recombinant DNA technology. The antibody heavy and light chain genes are cloned into expression vectors followed by their transient transfection into appropriate host cells. Proteintech offers a wide selection of recombinant antibodies against key protein targets spanning across multiple research areas. The antibodies are validated for use in various applications including WB, IHC, IF, Flow Cytometry and ELISA.

KD/KO validated

NF-κB p65 Recombinant Antibody

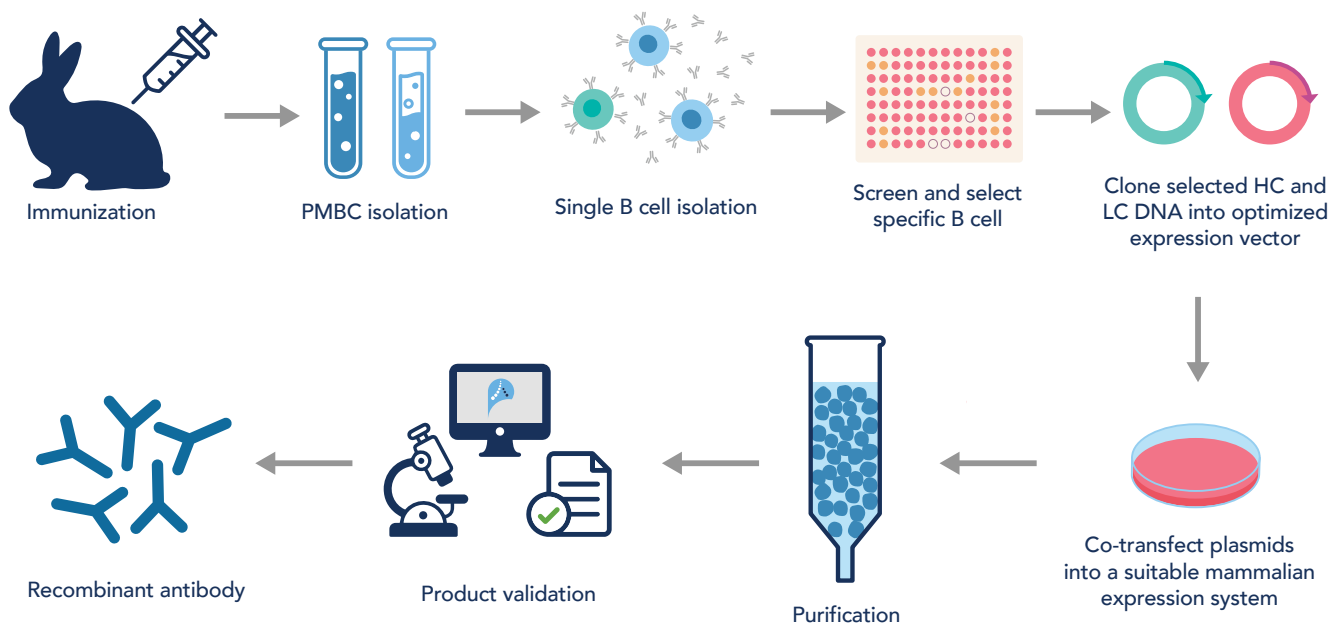


▲ WB analysis of various cell lysates using recombinant anti-NF-κB p65 antibody (80979-1-RR).

Why use recombinant antibodies?

- Unrivalled lot-to-lot consistency due to recombinant production platform
- Genetically engineered for enhanced sensitivity and affinity
- Unlimited supply
- Animal-free production once the antibody sequence is retrieved
- Coverage of difficult targets such as phosphorylated proteins
- Flexibility of design (e.g. Chromotek VHH fusion antibodies are generated by the fusion of alpaca-derived nanobodies/VHHs to the Fc-domain of traditional IgGs)

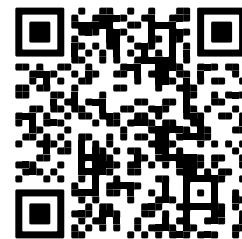
How recombinant antibodies are made



PHOSPHO-SPECIFIC ANTIBODIES

Antibodies for key signaling targets

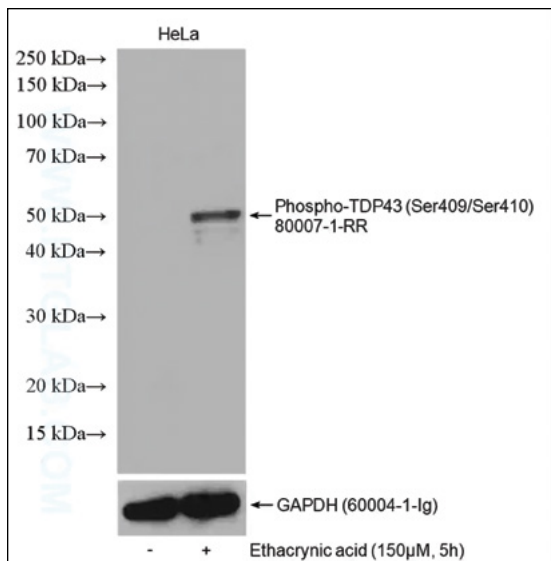
Proteintech offers monoclonal, polyclonal and recombinant antibodies against a wide range of phosphorylated protein targets and the corresponding total protein targets that are integral to several key signaling pathways. Many of our antibodies are available conjugated to fluorescent CoraLite® dyes making them suitable for immunofluorescence and flow cytometry applications.



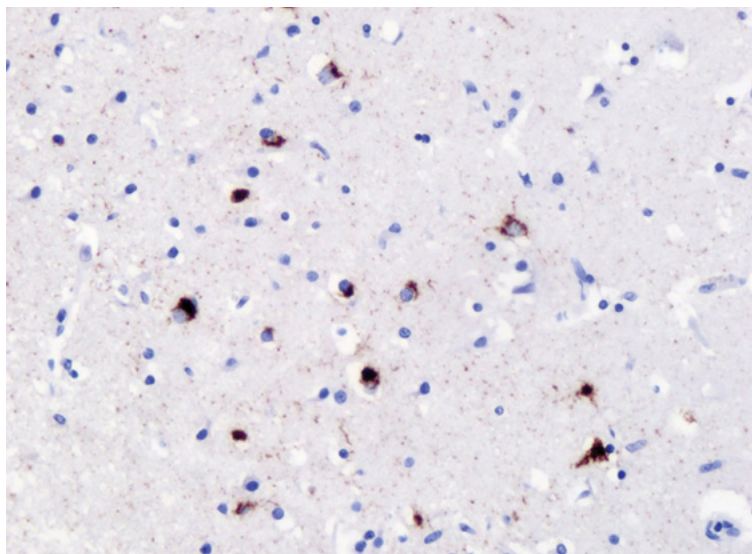
Scan for your free
signaling poster

Featured Product

Phospho-TDP43 (Ser409/410) Recombinant Antibody



▲ Non-treated and ethacrynic acid-treated HeLa cells were subjected to SDS PAGE followed by western blot with 80007-1-RR (Phospho-TDP43 (Ser409/410) antibody) at dilution of 1:300 incubated at 4°C overnight.



▲ IHC results of Phospho-TDP43 (Ser409/410) antibody (80007-1-RR) with the frontal cortex from FTLD-TDP type B patients. IHC experiment was done with Ventana automatic staining system and Optiview DAB detection kit with heat-induced epitope retrieval.

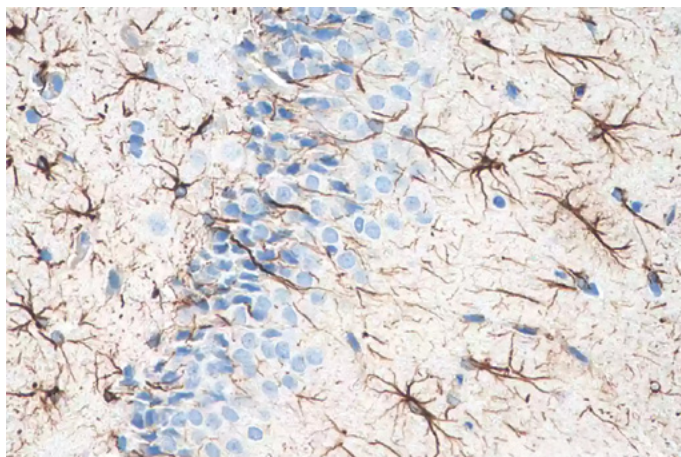
HRP- & BIOTIN-CONJUGATED PRIMARY ANTIBODIES

Direct detection of target antigen

Advantages of using directly conjugated primary antibodies:

- Quicker/simpler experimental protocol
- Reduced non-specific binding
- Improved resolution

Biotin-conjugated GFAP Monoclonal Antibody



▲ IHC analysis of paraffin-embedded rat brain tissue slide using Biotin-60190 (GFAP antibody) at dilution of 1:15000 (under 40x lens). Heat-mediated antigen retrieval with Tris-EDTA buffer (pH 9.0).

LOADING CONTROL ANTIBODIES

Find the right control for your experiment

The proteins that normally serve as internal controls in your research may not always take center stage, but they are indispensable for conducting meaningful research. Loading control proteins and protein tags provide a reference to evaluate the changes in expression levels of target proteins and help to ensure that any increase or decrease in target protein levels is due to your experimental manipulations, and not due to errors in your experimental procedure.

Popular control antibodies

- GAPDH (No.1 cited)
- α -tubulin
- β -actin
- COXIV

Sample Type

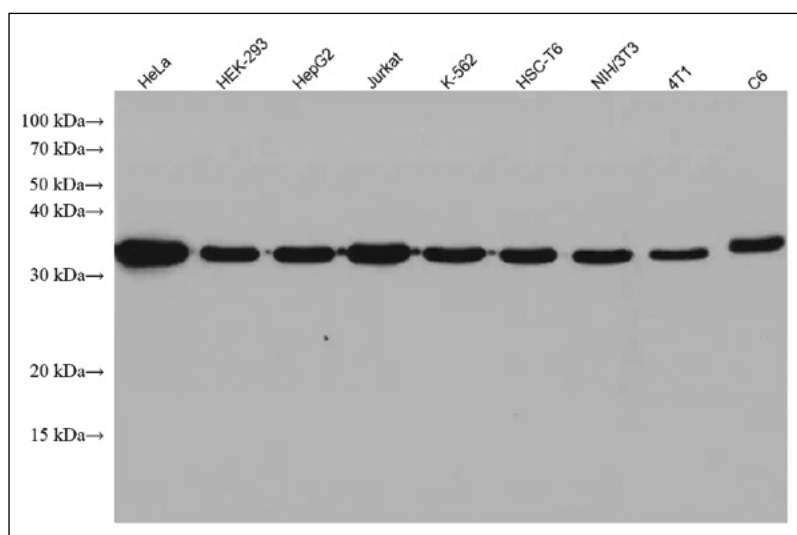
- Whole cell/
Cytoplasmic
- Nuclear
- Mitochondrial
- Serum



Featured Product

GAPDH Monoclonal Antibody

★★★★★ Scientist Reviews



▲ Cell lysates were subjected to SDS PAGE followed by Western blot with 60004-Ig (GAPDH antibody) at dilution of 1:200000 incubated at room temperature for 1.5 hours.

PROMO Control/Tag Antibodies

Special offer on highly cited loading and isotype controls

Epitope Tag Antibodies

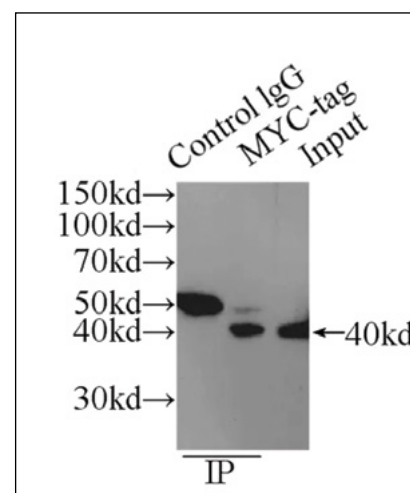
Proteintech offers a variety of conjugated and unconjugated antibodies for the identification, immunoprecipitation, and purification of proteins with genetically engineered epitope tags.

- 6*His-Tag
- GFP-Tag
- MYC-Tag
- FLAG®-Tag
- MBP-Tag
- GST-Tag
- HA-Tag
- V5-Tag
- Spot-Tag
- FC-Tag

... and more!

MYC tag Polyclonal Antibody

★★★★★ Scientist Reviews



▲ IP Result of anti-MYC-tag (IP: 16286-1-AP, 4 μ g; Detection: 16286-1-AP 1:1000) with transfected HEK-293 cell lysate 300 μ g.

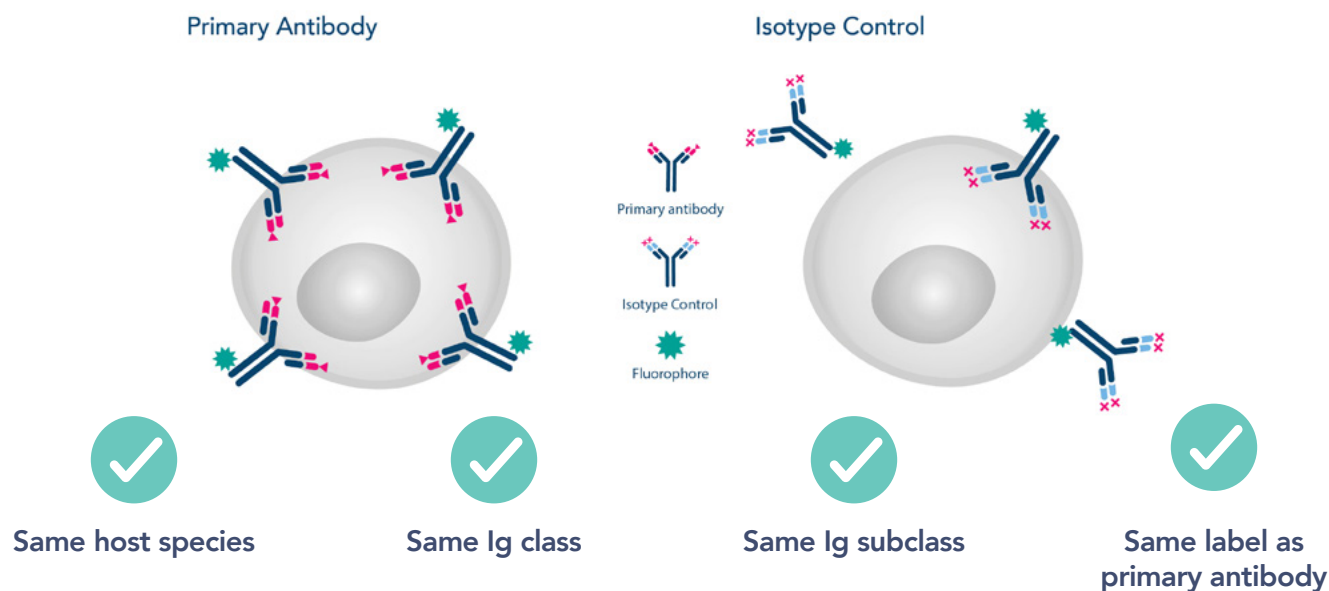
ISOTYPE CONTROL ANTIBODIES

Ensure reliable results every time

Experimental controls are critical in determining if the antibodies used in your experiment have any off-target binding capabilities. Including an isotype control as a negative control in your experiment also allows you to determine whether the blocking and/or washing steps in your protocol are sufficient.

What is an isotype control?

An isotype control is an antibody that is used as a negative control in antibody staining applications. Isotype control antibodies have the same immunoglobulin class and subclass as the primary antibody being used in the experiment but lack specificity to the protein of interest.



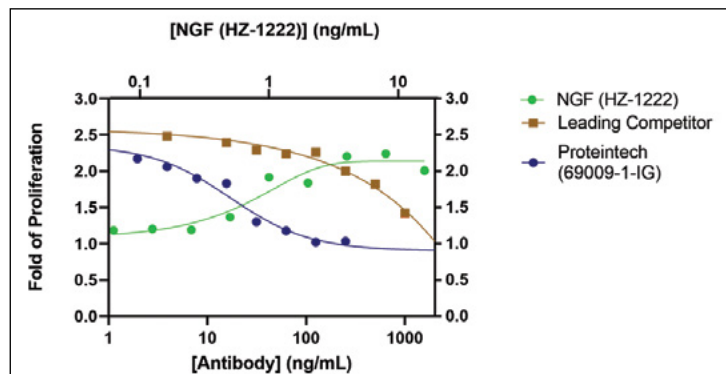
NEUTRAKINE™ NEUTRALIZING ANTIBODIES

Ideal for neutralization of cytokines and growth factors

Proteintech's NeutraKine™ neutralizing antibodies are made using HumanKine® human-expressed cytokines and growth factors. They are made and tested against authentic human proteins resulting in superior neutralizing activity and biological effects.

What can NeutraKine™ antibodies do?

- Block the effects of a cytokine/growth factor
- Validate the existence of target proteins
- Study the function of target proteins
- Study the mechanism of biological processes
- Evaluate the possibility of drug development



▲ TF-1 human erythroleukemic cells proliferate in response to stimulation by HumanKine® beta NGF (HZ-1222, green line). The stimulation response from HZ-1222 (4ng/mL) is neutralized by increasing concentration of NeutraKine™ beta NGF antibody (69009-1-Ig, blue line) and leading competitor's antibody (brown line). The ND50 of 69009-1-Ig is over 100X lower than the leading competitor's antibody.

ANTIBODY SAMPLER KITS

Perfect for sampling antibodies for popular research areas

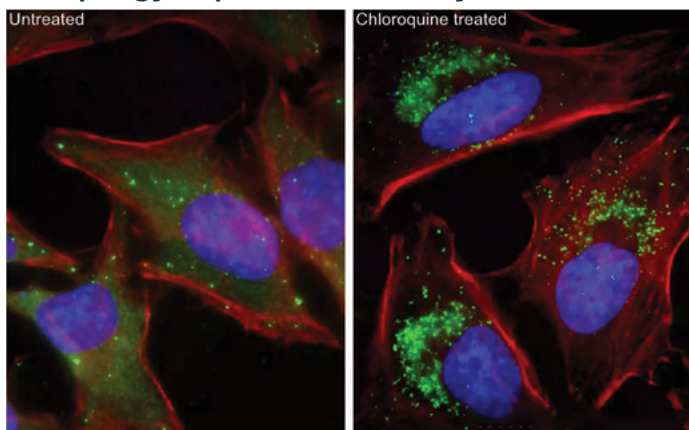
Proteintech now offers antibody kits containing multiple trial sized antibodies against key targets for studying specific pathways or for specific areas of research.

- Includes antibodies against top-cited targets for available research areas
- Convenience of testing multiple antibodies in multiple applications using a single kit
- Each antibody is validated in three or more applications
- Saves 30% compared to purchasing antibodies separately

Scan to explore
all antibody kits

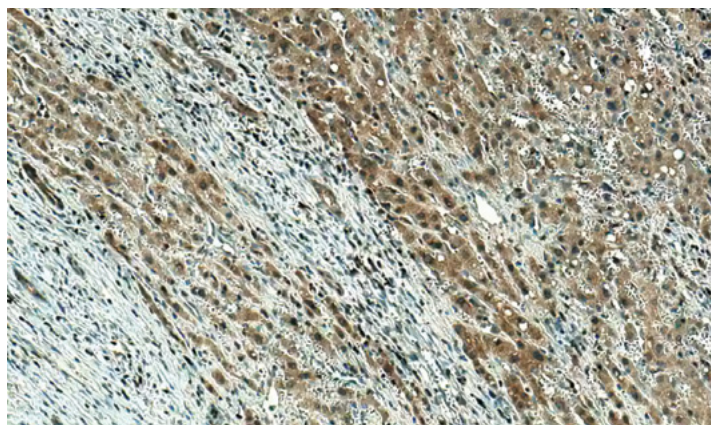


Autophagy Expanded Antibody Kit (PK30005)



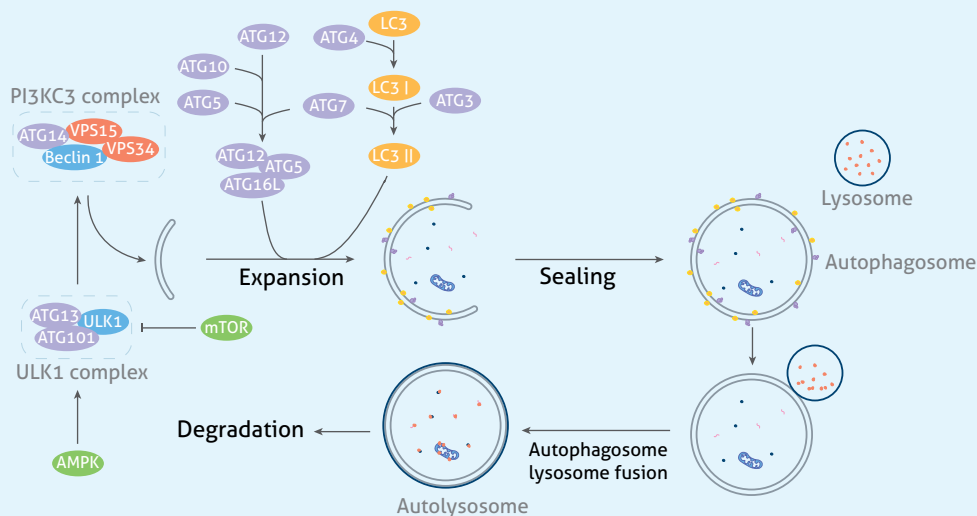
▲ IF analysis of untreated and Chloroquine treated HeLa cells using P62, SQSTM1 antibody (80294-1-RR). This antibody is included in both our Autophagy Essentials Antibody Kit (PK30004) and Autophagy Expanded Antibody Kit (PK30005).

Ferroptosis Expanded Antibody Kit (PK30003)



▲ IHC analysis of human liver cancer tissue using GPX4 antibody (67763-1-Ig). This antibody is included in both our Ferroptosis Essentials Antibody Kit (PK30002) and Ferroptosis Expanded Antibody Kit (PK30003).

*Targeting key
players in
Autophagy
signaling*





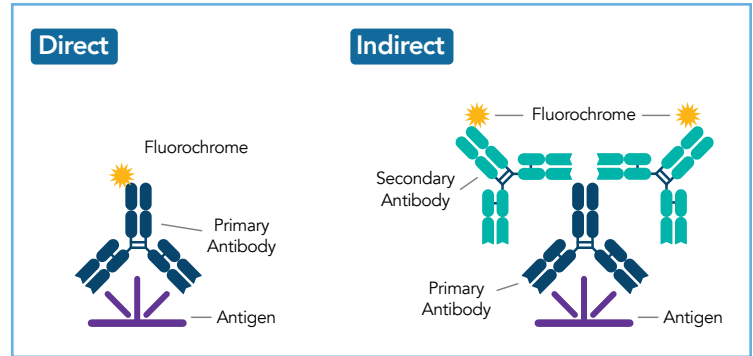
CORALITE® PLUS CONJUGATES

for Immunofluorescence

Proteintech's popular monoclonal and polyclonal antibodies are available directly conjugated to multiple fluorescent dyes; **CoraLite® Plus 488**, **CoraLite® Plus 555**, **CoraLite® Plus 594**, and **CoraLite® Plus 647**.

Each fluorophore can be used simultaneously in co-localization studies due to the minimum overlapping fluorescence spectra.

We have the largest in-house conjugated portfolio on the market.



Faster protocol



High resolution validation data



Excellent brightness



High photostability

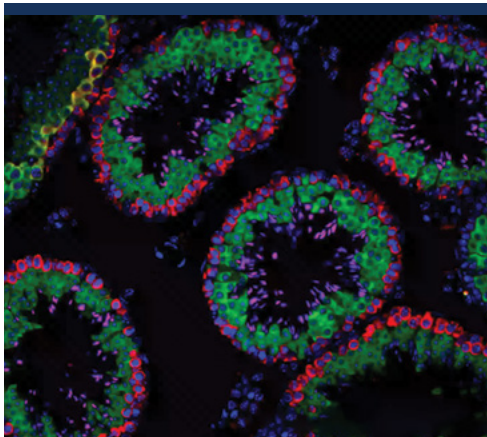
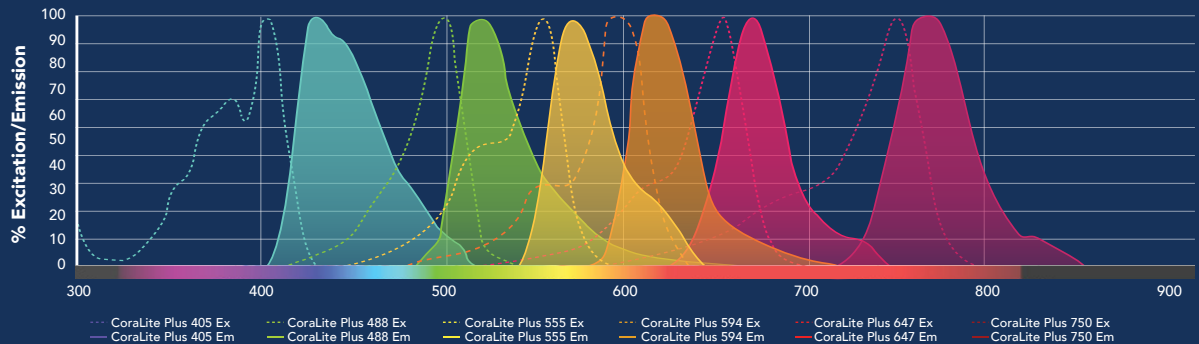


Easy to multiplex

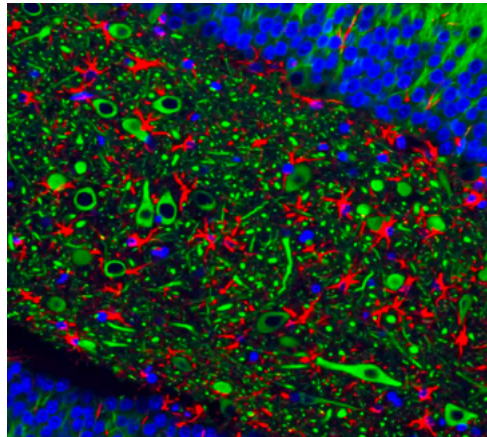


High degree of labeling

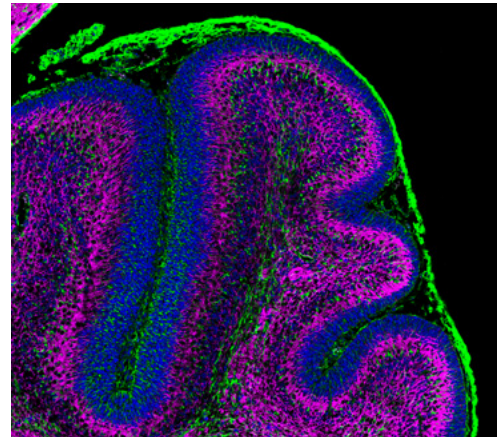
Proteintech CoraLite® Plus Fluorescent Dyes



▲ Mouse testis tissue stained using CoraLite Plus 488 BOULE antibody (green), CoraLite 594 DAZL antibody (red) and CoraLite Plus 647 TNP1 antibody (magenta).



▲ Mouse brain stained for CoraLite Plus 488 MAP2 antibody (green), CoraLite 594 GFAP antibody (Red) and CoraLite Plus 647 AQP4 antibody (Magenta).



▲ Neonatal mouse cerebellum stained with CoraLite Plus 488 Beta III tubulin antibody (magenta, pseudocolor) and GFAP antibody (green).



FlexAble ANTIBODY LABELING KITS

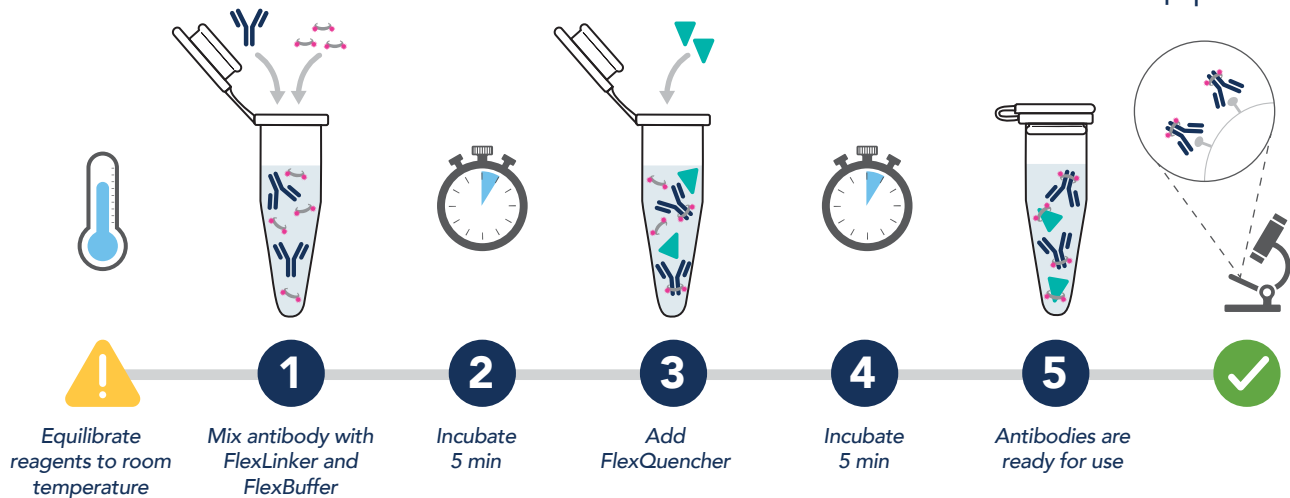
Any antibody. Any color. Any time.

FlexAble is a novel antibody labeling kit that enables faster and simpler multiplex detection by immunofluorescence, Western blot and flow cytometry. It uses an affinity linker to conjugate fluorochromes, enzymes and molecules in any buffer condition.

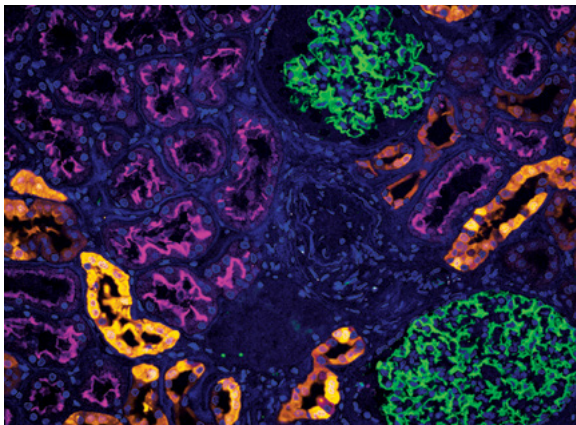
Conjugate	Compatibility
CoraLite® Plus 405	Rabbit IgG, Mouse IgG1, Mouse IgG2a, Mouse IgG2b
FITC Plus	Rabbit IgG, Mouse IgG1, Mouse IgG2a, Mouse IgG2b
CoraLite® Plus 488	Rabbit IgG, Mouse IgG1, Mouse IgG2a, Mouse IgG2b
CoraLite® Plus 555	Rabbit IgG, Mouse IgG1, Mouse IgG2a, Mouse IgG2b
CoraLite® Plus 647	Rabbit IgG, Mouse IgG1, Mouse IgG2a, Mouse IgG2b
CoraLite® Plus 750	Rabbit IgG, Mouse IgG1, Mouse IgG2a, Mouse IgG2b
Horseradish Peroxidase (HRP)	Rabbit IgG, Mouse IgG1, Mouse IgG2a, Mouse IgG2b
Biotin	Rabbit IgG, Mouse IgG1, Mouse IgG2a, Mouse IgG2b

Benefits of FlexAble Labeling:

- Enable same species multiplexing
- Compatible with antibodies from any supplier
- Works with any antibody concentration and formulation
- Fast and easy 2-step protocol—ready to use in 10 minutes
- Label as little as 0.5 µg of your antibody. No buffer exchange needed.
- No additional equipment required

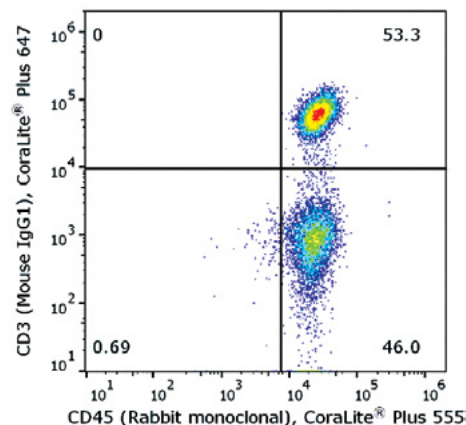


Multi-species Multiplexing



◀ Human kidney section stained with anti-Calbindin + FlexAble KFA002, anti-ACE2 + FlexAble KFA023, CoraLite®488-conjugated anti-Podocalyxin, and DAPI. Yellow, magenta, green and blue, respectively.

Easy Panel Design



◀ FC of PBMC. 1x10⁶ human PBMCs were stained with Anti-human CD45 labeled with FlexAble CoraLite® Plus 555 Kit (KFA002) and anti-CD3 (clone UCHT2, 65151-1-Ig) labeled with FlexAble CoraLite® Plus 647 Kit (KFA023).

ANTIBODIES FOR FLOW CYTOMETRY

Multiplex with ease



Explore our
antibodies for
flow cytometry

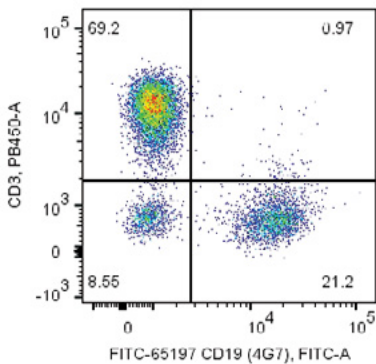
Flow Cytometry Antibodies

Top-cited clones have been conjugated to a wide range of dyes for ease of staining and to reduce the length of your protocol. Unconjugated antibodies are also available to give you the most flexibility in building your panel.

- 160+ top-cited clones for human, mouse, and rat targets
- Conjugated to CoraLite® Plus and classic flow cytometry dyes
- Rigorous and transparent validation data
- Bulk pure antibody available

Dyes	Excitation, nm	Emission, nm	Spectrally similar dyes
Atlantic Blue™	404	458	Pacific Blue™
FITC/FITC Plus	490	525	Alexa Fluor® 488
PE	490; 565	578	Alexa Fluor® 555, Cy3, DyLight® 550
Cardinal Red™	592	611	Alexa Fluor® 594, Texas Red®
APC	650	661	Alexa Fluor® 647, Cy5, DyLight® 650

Dyes	Excitation, nm	Emission, nm	Spectrally similar dyes
CoraLite® Plus 405	399	422	Alexa Fluor® 405
CoraLite® Plus 488	493	522	Alexa Fluor® 488, FITC
CoraLite® Plus 555	554	570	Alexa Fluor® 555, Cy3, DyLight® 550
CoraLite® 594	590	617	Alexa Fluor® 594, Texas Red®
CoraLite® Plus 647	654	674	Alexa Fluor® 647, Cy5, DyLight® 650
CoraLite® Plus 750	755	780	Alexa Fluor® 750, DyLight® 755

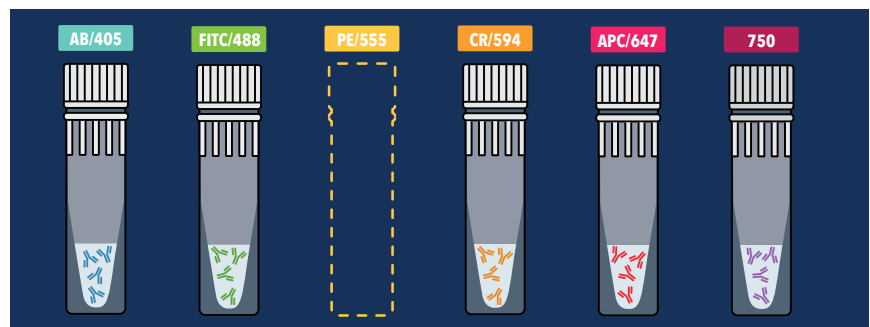


◀ 1X10⁶ human PBMCs were surface co-stained with Anti-Human CD3 and 5ul FITC Plus Anti-Human CD19 (FITC-65197, Clone:4G7). Cells were not fixed. Lymphocytes were gated.

Flow Cytometry Panels

As panel sizes increase, finding the right combination of targets and conjugates for your multiplex flow cytometry panel becomes increasingly difficult. Proteintech's flow cytometry panels are designed and optimized to find your target cell population and provide a scaffold upon which to build your ideal multiplex panel.

- Five full-sized antibodies
- Compatible with both live and fixed cell staining
- PE channel left open for your target of interest

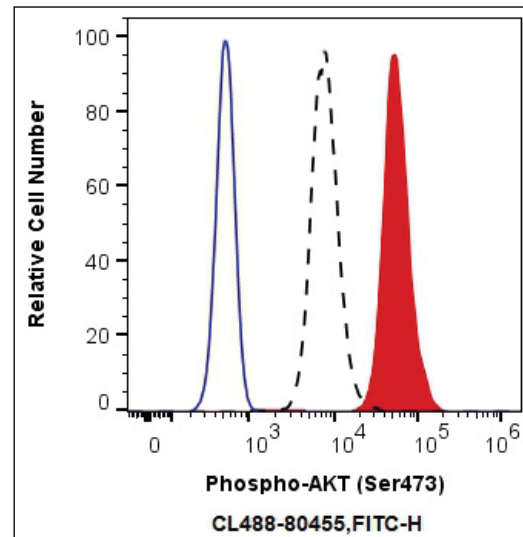
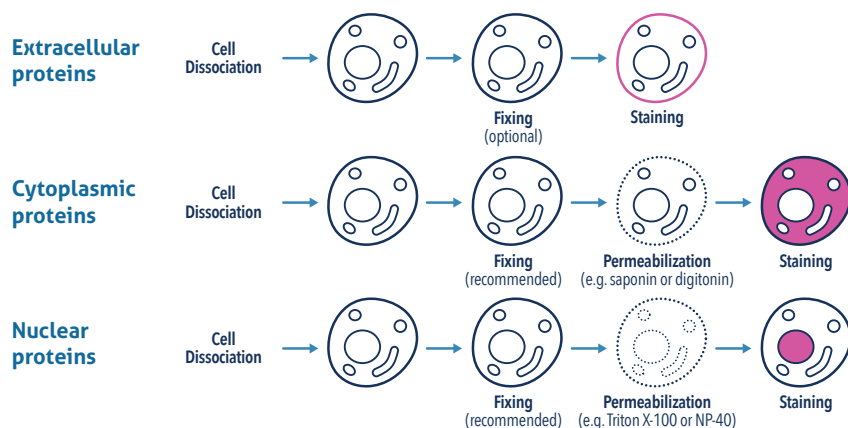


Catalog No.	Product Name	Targets Included
PK30007	Human T Cell Basics Panel	CD3, CD4, CD81, CD45, CD19
PK30008	Human B Cell Basics Panel	CD3, CD45, CD19, CD20, CD21
PK30009	Human NK Cell Basics Panel	CD3, CD7, CD16, CD56, CD96
PK30010	Human Monocyte Basics Panel	CD3, CD14, CD16, CD64, HLA-DR
PK30011	Human Memory/Naïve T Cell Basics Panel	CD3, CD4, CD8a, CD45RA, CD45RO
PK30012	Human TBNK Basics Panel	CD3, CD4, CD8a, CD19, CD56
PK30013	Mouse Activated T Cell Panel	CD3e, CD4, CD8a, CD25, CD60

Intracellular Flow Cytometry

A wide selection of Proteintech primary antibodies have been validated for intracellular flow cytometry and conjugated to CoraLite® Plus dyes for easy multiplexing.

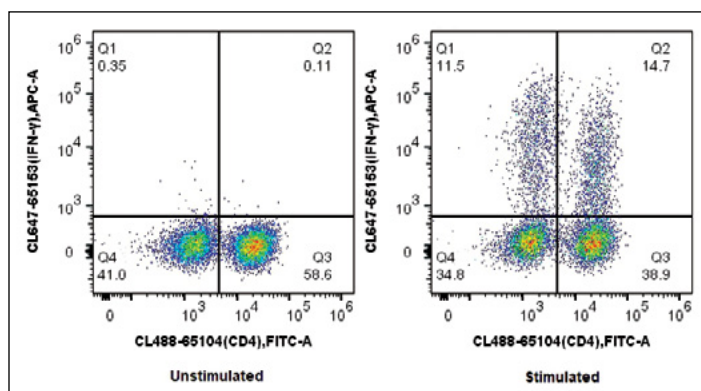
- Use flow cytometry to study cell signaling, cell death, neuroscience, epigenetics, and more.
- Over 1600 antibodies to more than 800 targets
- Many conjugated antibodies also validated for IF – use the same antibody for both!



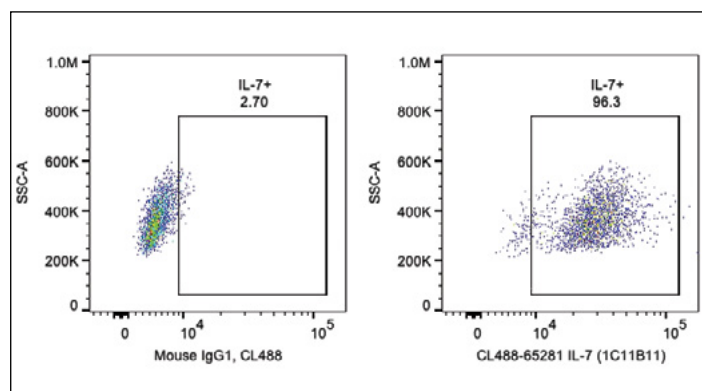
▲ 1X10⁶ HEK-293 cells untreated (dashed lines) or treated with Calyculin A (red) were intracellularly stained with 0.13 ug CoraLite® Plus 488 Anti-Human Phospho-AKT (Ser473) (CL488-80455, Clone:2E17), or 0.13 ug Control Antibody (blue). Cells were fixed with 4% PFA and permeabilized with 80% MeOH.

Cytokine Antibodies for Intracellular Flow Cytometry

- Antibodies against human and mouse cytokines
- Rigorous validation and physiologically relevant data
- Pre-conjugated to shorten your protocol



▲ 1X10⁶ unstimulated or PMA and Ionomycin stimulated (in the presence of Brefeldin A) C57BL/6 mouse splenocytes were surface stained with CoraLite® 488 Anti-Mouse CD4 (CL488-65104, Clone: GK1.5) and then fixed with 4% PFA and permeabilized with Flow Cytometry Perm Buffer (PF00011-C). Cells were then stained with 5 ul CoraLite® Plus 647 Anti-Mouse IFN gamma (CL647-65153, Clone: XM61.2).



▲ 1X10⁶ LPS and Brefeldin A treated human PBMCs were intracellularly stained with 0.2 ug CoraLite® Plus 488 Anti-Human IL-7 (CL488-65281, Clone:1C11B11) or Mouse IgG1 Isotype Control. Cells were fixed and permeabilized with Transcription Factor Staining Buffer Kit (PF00011). Monocytes were gated.

SECONDARY ANTIBODIES

Highly sensitive secondary antibodies to suit your experimental needs

Proteintech offers a comprehensive portfolio of highly sensitive secondary antibodies validated to detect unconjugated primary antibodies in a wide range of applications. We offer secondary antibodies raised against a variety of target species and conjugated to various dyes and enzymes to provide you with a wide selection of options to choose the right secondary antibody that best fits your experimental design.

Scan to browse
secondary
antibodies



Species Reactivities

- Mouse
- Rabbit
- Human
- Rat
- Goat
- Chicken
- Macaque
- Guinea pig
- Horse
- Sheep
- Swine

Applications

- Western Blot
- Immunofluorescence
- Immunohistochemistry
- ELISA
- Flow Cytometry

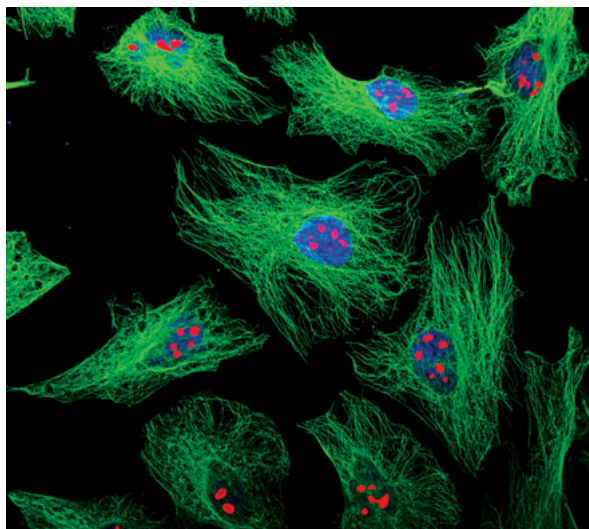
Conjugates

- AMCA
- Alexa Fluor® 488
- Alexa Fluor® 568
- Alexa Fluor® 647
- Alkaline phosphatase
- Biotin
- CoraLite® Plus 488
- CoraLite® Plus 555
- CoraLite® Plus 594
- CoraLite® Plus 647
- CoraLite® Plus 750
- CoraLite® 488
- CoraLite® 594
- CoraLite® 647
- Cy3
- FITC
- HRP
- Poly-HRP
- Rhodamine
- R-PE

Multi-rAb

RECOMBINANT SECONDARY ANTIBODIES

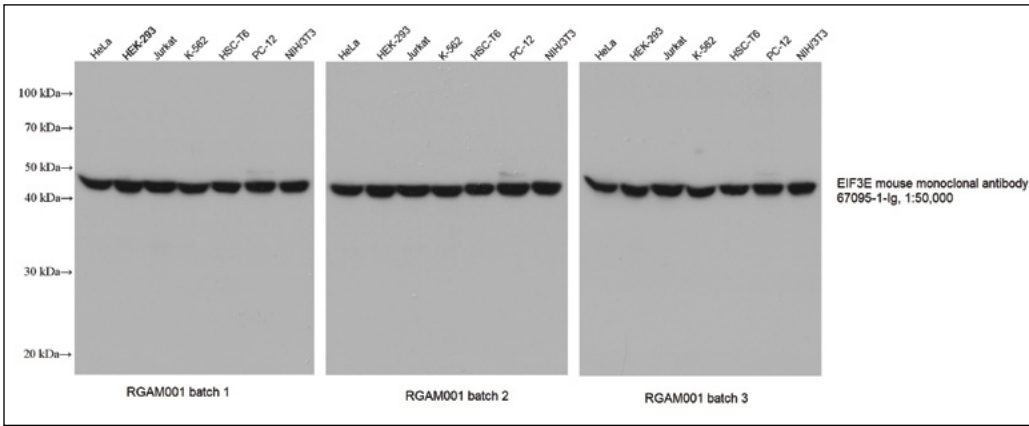
Multi-rAb Recombinant Secondary Antibodies are mixtures of precisely engineered recombinant monoclonal antibodies that recognize multiple complementary epitopes on the same IgG. Each recombinant clone in the final multiclonal secondary antibody mixture is carefully selected after rigorous characterization and screening to ensure the highest level of performance.



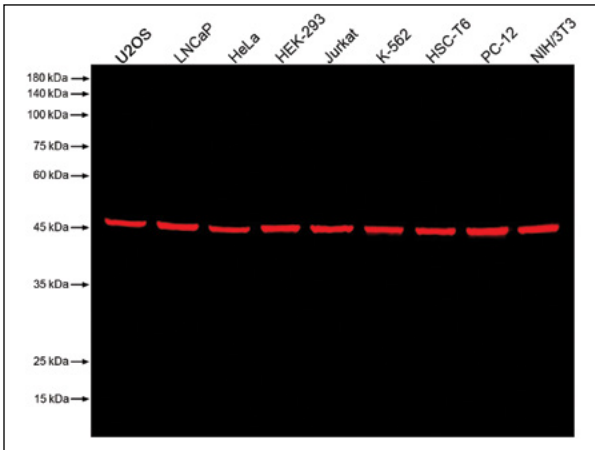
- Combines the high sensitivity of polyclonals with the superior specificity of monoclonals
- Unlimited supply, high lot-to-lot consistency, and reproducibility of results throughout your project
- Minimal cross-reactivity with off-target species
- Animal origin free

◀ IF analysis of HeLa cells stained with rabbit polyclonal anti-alpha tubulin antibody (11224-1-AP, green) and mouse monoclonal anti-NPM1 antibody (60096-1-Ig, red). CoraLite® Plus 488-Goat Anti-Rabbit Recombinant Secondary Antibody (H+L) and CoraLite® Plus 594-Goat Anti-Mouse Recombinant Secondary Antibody (H+L) were used for detection.

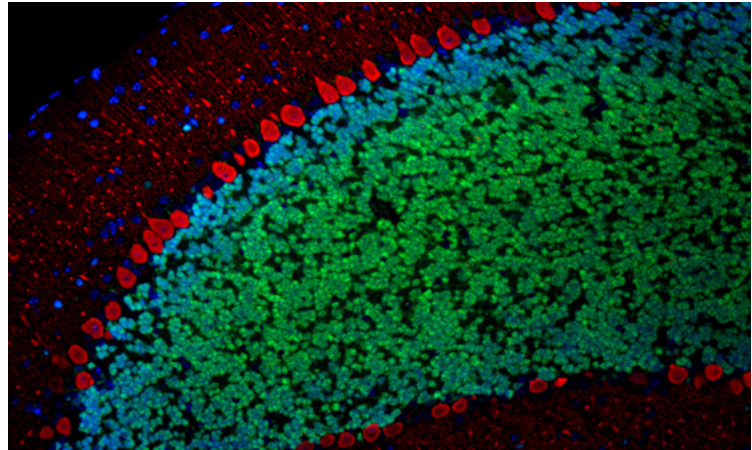
SECONDARY ANTIBODIES



◀ Various lysates were subjected to SDS-PAGE followed by Western blot with EIF3E mouse monoclonal antibody (67095-1-Ig) at a dilution of 1:50000. Three separate batches of Multi-rAb HRP-Goat Anti-Mouse Recombinant Secondary Antibody (H+L) (RGAM001) were used at a dilution of 1:20000 for detection.

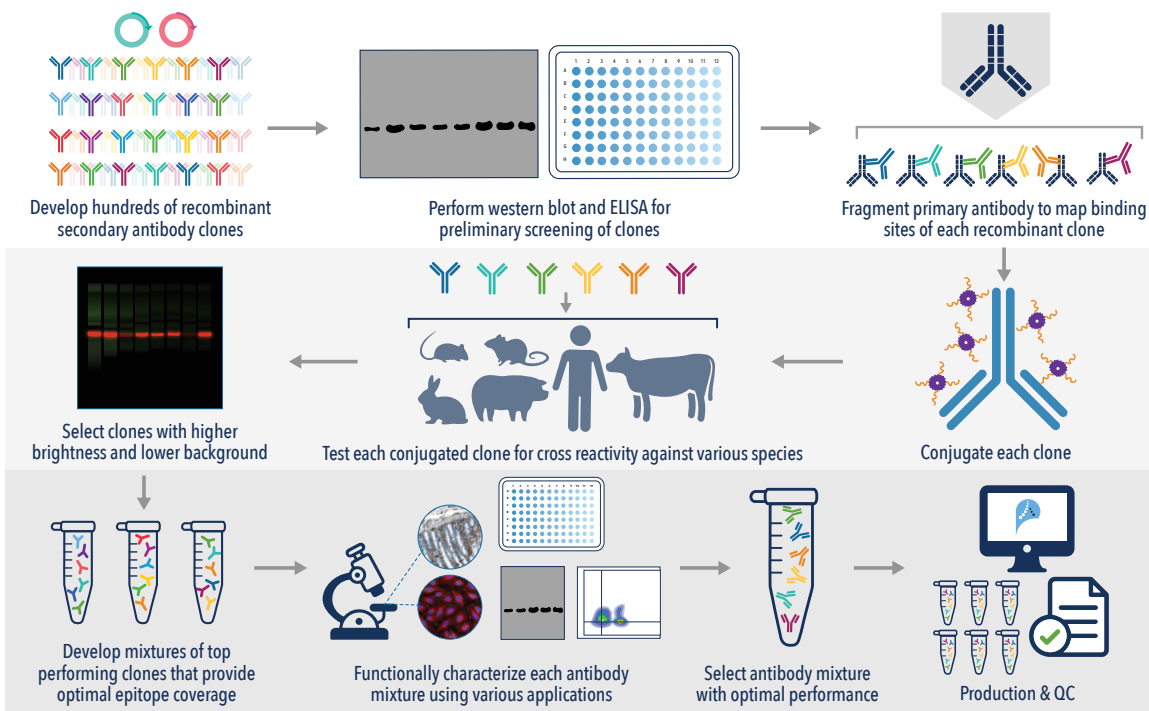


▲ Various lysates were subjected to SDS-PAGE followed by Western blot with anti-EIF3E mouse monoclonal antibody (67095-1-Ig, isotype IgG1) at a dilution of 1:50000. Multi-rAb CoraLite® Plus 750-Goat Anti-Mouse Recombinant Secondary Antibody (H+L) (RGAM006) was used at a dilution of 1:10000 for detection.



▲ IF analysis of mouse cerebellum FFPE tissue stained with Rabbit anti-NeuN polyclonal antibody (26975-1-AP, green) and mouse anti-Calbindin-D28K monoclonal antibody (66394-1-Ig, red). Multi-rAb CoraLite® Plus 488-Goat Anti-Rabbit Recombinant Secondary Antibody (H+L) (RGAM002) and Multi-rAb CoraLite® Plus 594-Goat Anti-Mouse Recombinant Secondary Antibody (H+L) (RGAM004) were used for detection.

How are Multi-rAb Recombinant Secondaries produced?



Screening and characterization of hundreds of recombinant antibody clones

Conjugation followed by screening of conjugated clones

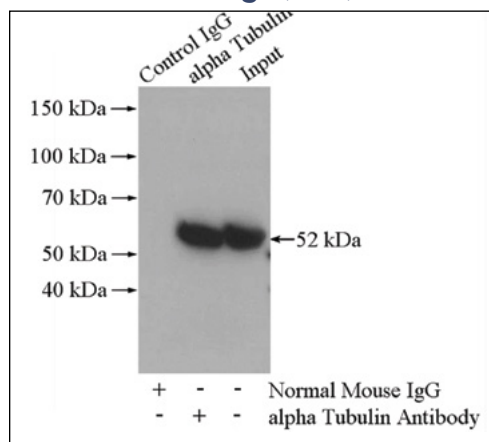
Screening and characterization of recombinant multiclonal antibody mixtures to identify final mixture with optimal performance

Conventional Secondary Antibodies

Proteintech's conventionally produced polyclonal secondary antibodies offer high sensitivity and are available in a wide range of conjugate options and species specificities.

Top-Cited

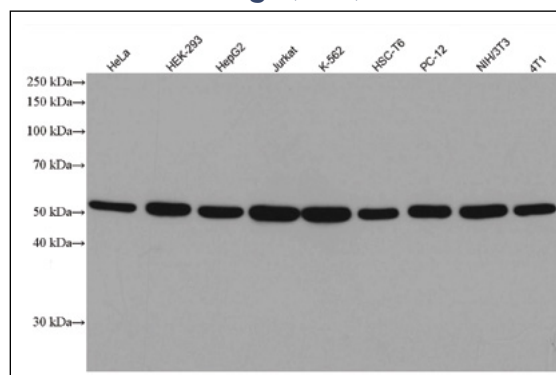
Goat anti-rabbit IgG(H+L), HRP



▲ IP of tubulin in HeLa cells using monoclonal anti-alpha tubulin antibody (66031-1-Ig) followed by western blot analysis using polyclonal alpha tubulin antibody (11224-1-AP) and HRP-conjugated Affinipure Goat Anti-Rabbit IgG(H+L) secondary antibody (SA00001-2).

Top-Cited

Goat anti-mouse IgG(H+L), HRP

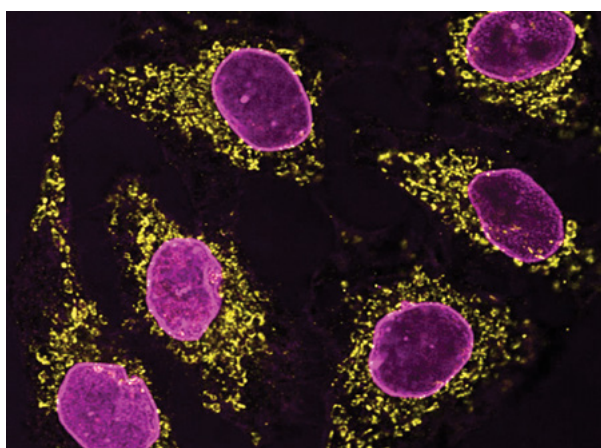


▲ WB analysis of various cell lysates using monoclonal anti-alpha Tubulin antibody (66031-1-Ig) and HRP-conjugated Affinipure Goat Anti-Mouse IgG(H+L) secondary antibody (SA00001-1).

chromotek[®] NANO-SECONDARY[®] REAGENTS

Novel class of secondary antibodies

Multiplexing with Nano-Secondaries

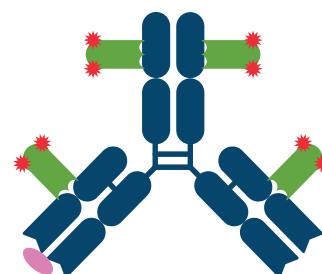


▲ IF analysis of HeLa cells co-stained with mouse monoclonal IgG1 anti-HSP60 antibody (66041-1-Ig, yellow) and mouse monoclonal IgG2b anti-Lamin A/C antibody (magenta). Nano-Secondary® alpaca anti-mouse IgG1, recombinant VHH, CoraLite® Plus 555 (smsG1CL555-1) and Nano-Secondary® alpaca anti-mouse IgG2b, recombinant VHH, CoraLite® Plus 647 (smsG2bCL647-1) were used for detection.

Recombinantly generated alpaca nanobodies/VHHs conjugated to fluorescent dyes that are highly suitable for super-resolution microscopy.

- Achieves higher resolution and better tissue penetration due to smaller size
- Subclass specific Nano-Secondaries enable multiplexing of primary antibodies raised in the same species
- Low background
- High lot-to-lot consistency
- Animal origin free

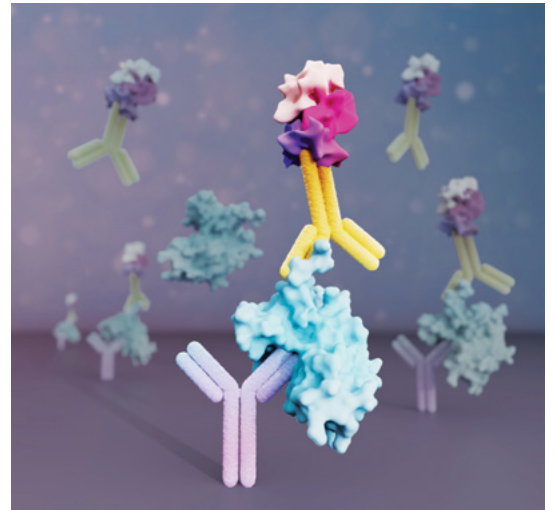
► Primary antibody (dark blue) and Nano-Secondary® Reagents (green) complex. Epitope is shown in pink and conjugated fluorescent dyes are shown in red.



ELISA KITS

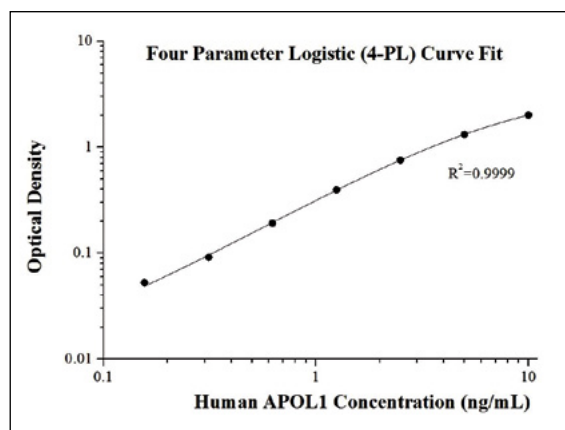
Pre-coated ELISA kits with superior performance and reliability

- Over 350 targets, all made in-house
- Extensive statistical validation with natural samples
- Easy to follow protocols, strip-plate format
- Competitively priced to fit your budget
- Target coverage for the following areas:
 - Cancer
 - Cardiovascular
 - Kidney disease
 - Immunology
 - Metabolism
 - Neuroscience



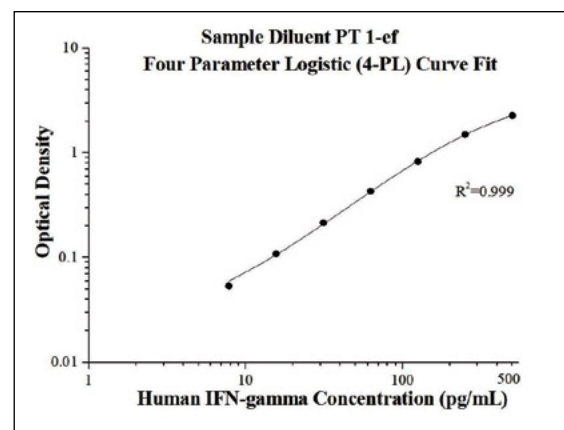
Human APOL1 ELISA kit (KE00047)

First-to-market for this important target in kidney disease.



AuthentiKine™ Human IFN-gamma ELISA kit (KE00146)

15x more sensitive than leading competitors.



AUTHENTIKINE™ ELISA KITS

Highly sensitive ELISA kits made with real human proteins

- ELISA kits for measuring growth factors and cytokines
- Made with HumanKine® proteins as immunogens and kit protein standards
- Enables more sensitive detection of native human proteins with authentic glycosylation
- Up to 1000x more sensitive than leading competitors



IMMUNOHISTOCHEMISTRY KITS

From beginners to highly experienced users



IHCeasy Kits

Target-specific, complete IHC workflow kits containing pre-optimized primary antibody



IHC Prep & Detect Kits

Kits for developing complete IHC workflows using any primary antibody of choice



IHC Detect Kits

Kits for highly-sensitive chromogenic signal detection

Antigen Retrieval Buffer	✓	✓	
Washing Buffer	✓	✓	
Blocking Buffer	✓	✓	
Quenching buffer		✓	✓
Primary Antibody Dilution Buffer		✓	✓
Primary Antibody	✓		
Secondary Antibody	✓	✓	✓
Chromogen	✓	✓	✓
Signal Enhancer	✓	✓	
Counter Staining Reagent	✓	✓	
Mounting Media	✓	✓	
Control Slide (optional)	✓		
Step-by-Step Protocol	✓		

Scan to explore
all IHC products



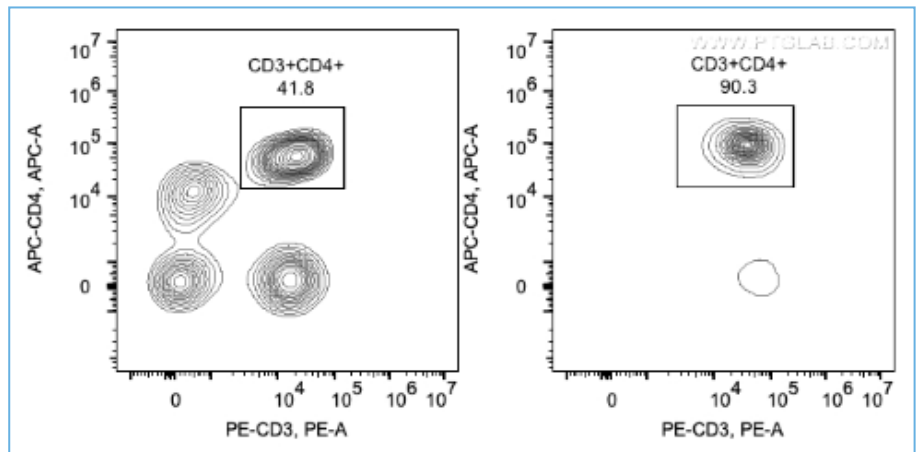
MAGNETIC CELL SEPARATION SYSTEMS

Isolate and activate

The characterization of specific cell types and their use in various downstream applications requires that cells of interest can be isolated from a heterogeneous cell population such as PBMC or whole blood.

Simply incubate your heterogeneous cell suspension with Proteintech's highly specific magnetic cell separation beads to discover quick, easy, column-free cell depletions and isolations, resulting in a high purity homogeneous cell population of interest!

- Quick and easy compared to cell separation by fluorescence activated cell sorting (FACS)
- High quality, in-house validation including PBMC and whole blood testing
- Compatible with your current magnet!

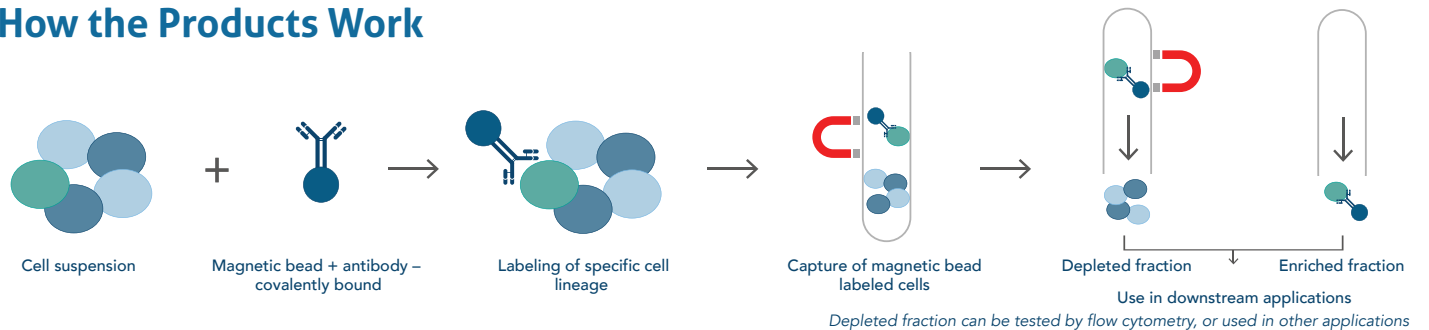


▲ Following cell separation (enrichment), cell suspension was stained with FITC-CD45(F10-89-4), PE-CD3(UCHT1) and APC-CD4(OKT4) antibodies. All CD45+ cells are gated in the analysis. Left panel: CD3+CD4+ cells before selection. Right panel: CD3+CD4+ cells after selection. Human CD4 selection kit is tested using PBMC from three donors.

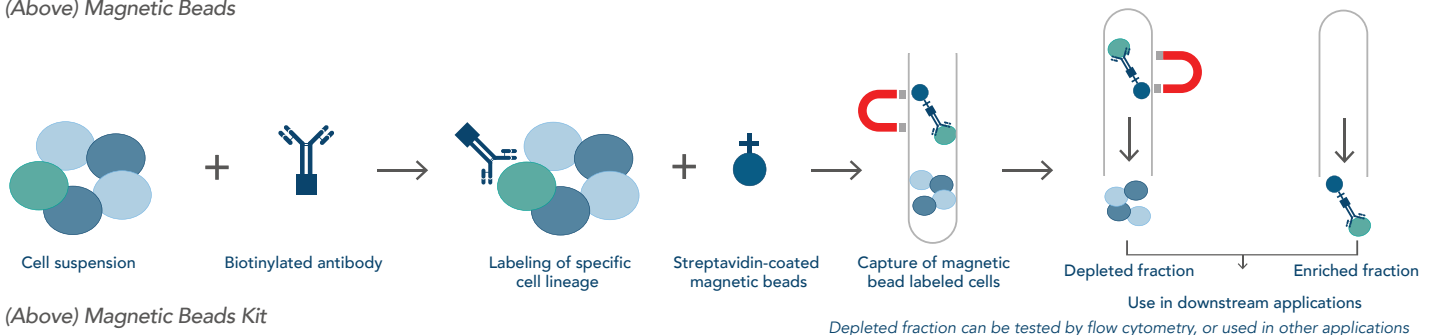


Scan to explore the range

How the Products Work



(Above) Magnetic Beads

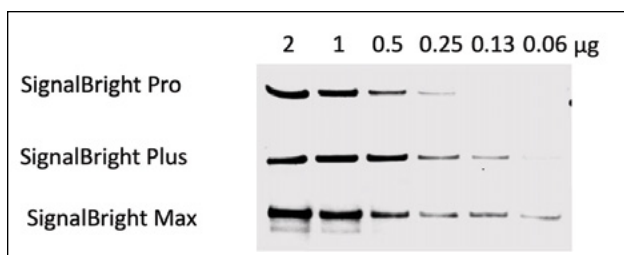


(Above) Magnetic Beads Kit

Supporting Products for WESTERN BLOTS

SignalBright Chemiluminescent Substrate

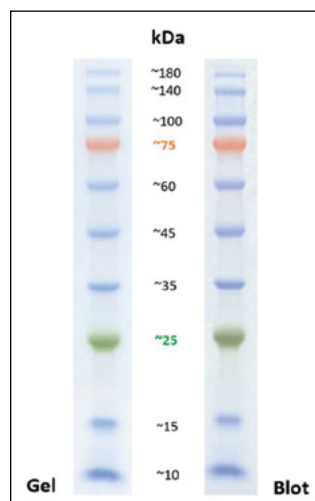
Detect low abundance proteins or precious samples with Proteintech's SignalBright chemiluminescent substrate range: Pro, Plus and Max.



▲ Comparison of Proteintech's SignalBright Pro (PK10011), SignalBright Plus (PK10012), and SignalBright Max (PK10013) Enhanced Chemiluminescent Substrate. Serial dilutions of HeLa cell lysate. Exposure Time: 30 seconds.

Prestained Protein Marker

For Western blotting and electrophoresis applications. Offered in standard and broad range.



◀ Resolution of the prestained protein ladder (PL00001) in a 10-20% Tris-glycine gel (SDS-PAGE). The image shows the migration pattern in the gel and after transfer to a PVDF membrane.

Supporting Products for IMMUNOHISTOCHEMISTRY

Antigen Retrieval Buffers

Proteintech offers a variety of pre-formulated antigen retrieval buffers for performing either heat-induced epitope retrieval (HIER) or protease-induced epitope retrieval (PIER) based on target antigen compatibility. We offer:

- Tris-EDTA Antigen Retrieval Buffer (PR30002)
- Sodium Citrate Antigen Retrieval Buffer (PR30001)
- Protease K Antigen Retrieval Buffer (PR30014)



Hydrophobic IHC Pens (PR30013)

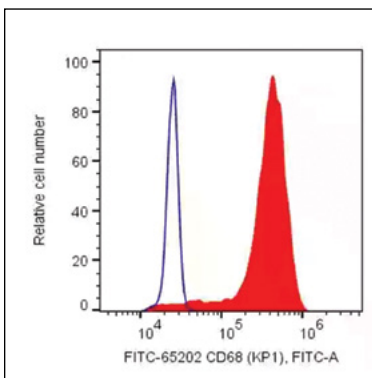
Proteintech's hydrophobic IHC pens can be used for marking around the tissue sections on slides during IHC, thereby creating a water-repellent barrier that prevents reagents from running off the slides. This helps reduce unnecessary waste of reagents during IHC.

Supporting Products for FLOW CYTOMETRY

Fix and Perm Reagents

Fix and perm reagents allow for investigation of intracellular and nuclear targets with flow cytometry. We're proud to offer the same buffers that we use in-house for our flow cytometry product validation, from our bench to your bench™.

Catalog No.	Product Name
PF00011-C	Flow Cytometry Perm Buffer (10X)
PF00012	Flow Cytometry Staining Buffer (1X)
PF00011	Foxp3 / Transcription Factor Staining Buffer Kit
PF00011-A	Foxp3 / Transcription Factor Fix/Perm Concentrate (4X)
PF00011-B	Foxp3 / Transcription Factor Fix/Perm Diluent (1X)
PF00013	RBC Lysis Buffer (10x)

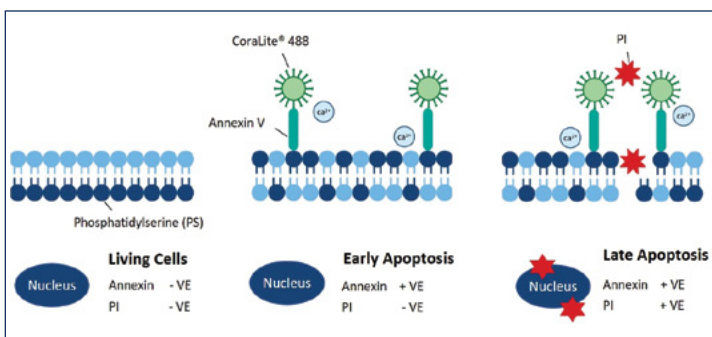
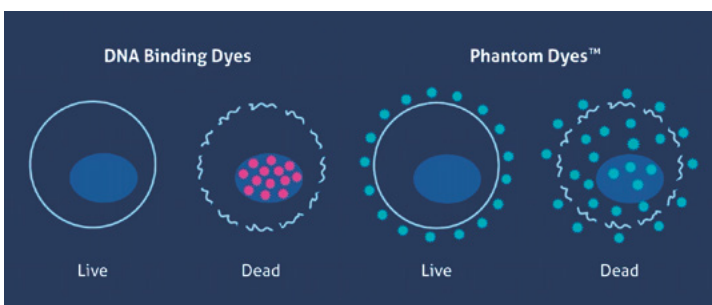


◀ 1×10^6 human PBMCs were intracellularly stained with 5 μ l FITC Plus Anti-Human CD68 (KP1) (FITC-65202, red), or Mouse IgG1 Isotype Control (blue). Cells were fixed and permeabilized with Transcription Factor Staining Buffer (PF00011). Monocytes were gated.

Cell Death and Viability Dyes

Dead cells in your sample can stain non-specifically, causing inaccurate results. Viability dyes stain dead or dying cells, allowing you to gate them out during analysis.

Catalog No.	Product Name
PD00003	Phantom Dye UV 450 Viability Dye
PD00004	Phantom Dye Violet 450 Viability Dye
PD00005	Phantom Dye Violet 510 Viability Dye
PD00006	Phantom Dye Violet 540 Viability Dye
PD00007	Phantom Dye Blue 516 Viability Dye
PD00001	Phantom Dye Red 710 Viability Dye
PD00002	Phantom Dye Red 780 Viability Dye
PF00005	CoraLite®488-Annexin V and PI Apoptosis Kit
PF00006	CoraLite®488 TUNEL Assay Apoptosis Detection Kit
PF00009	CoraLite®594 TUNEL Assay Apoptosis Detection Kit
PF00007	Viability/Cytotoxicity Assay Kit for Animal Live & Dead Cells (Calcein AM, PI Method)
PF00008	Viability/Cytotoxicity Assay Kit for Animal Live & Dead Cells (Calcein AM, EthD-1 Method)





CONTACT US

Proteintech Group, Inc. *(HQ in North America)*

5500 Pearl Street, Ste 400
Rosemont, IL 60018, USA

P +1 (888) 478-4522
(toll free in USA)

F +1 (773) 598-4321
+1 (847) 928-2189

E proteintech@ptglab.com

Proteintech Europe

P +44 161 839 3007

F +44 161 241 3103

E europe@ptglab.com

Proteintech Germany GmbH

ChromoTek GmbH

Fraunhoferstr. 1

82152 Planegg-Martinsried Germany

P +49 89 124 148 850

F +49 89 124 148 811

E germany@ptglab.com

Proteintech China

E proteintech-CN@ptglab.com

Proteintech Singapore

P +65 9785 0861

E singapore@ptglab.com

ptglab.com

