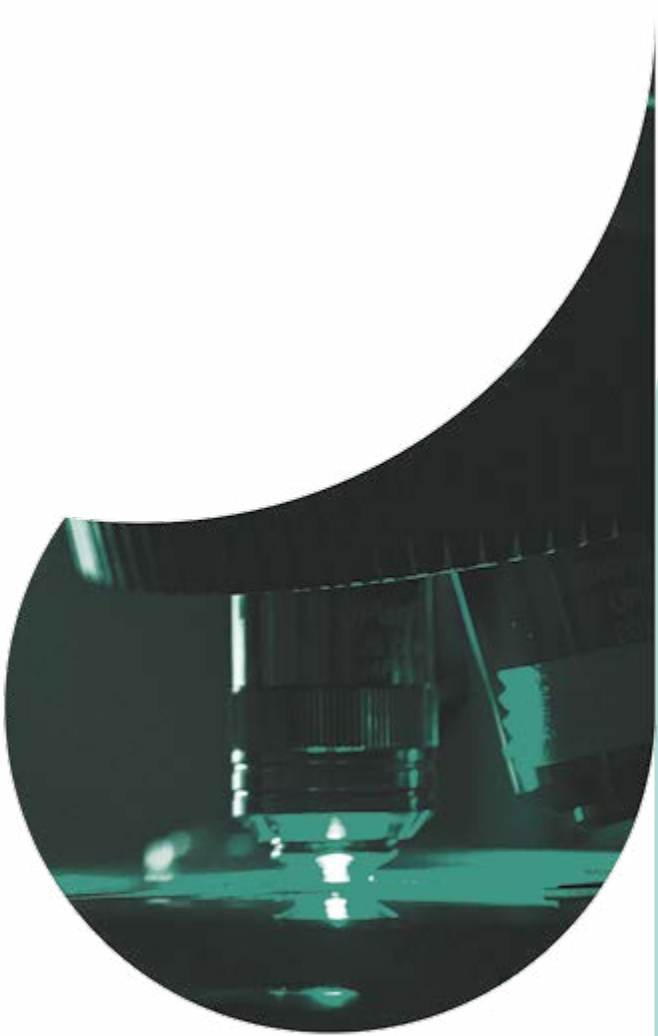


# ANTIBODIES FOR CANCER RESEARCH





# WELCOME

Progress in cancer research would not be possible without the efforts of scientists and medical professionals worldwide. At Proteintech, we would like to see these researchers succeed and are here to provide high-quality antibodies to the oncology community to support advancement and discovery. We are proud to have supplied our antibodies to a vast number of scientists in cancer research, many of whom have gone on to publish work with their help. In addition to the wide selection of oncology-related antibodies displayed in this catalog, we also provide coverage of such antibody success stories.

## About Us

Proteintech was established in 2001 by a research collective based at the University of Illinois at Chicago. They set out to provide fellow researchers with antibodies made to the highest standards straight from their own laboratory, and would never source a single antibody from any other provider.

Since the first few hundred antibodies, Proteintech has grown to offer thousands of antibodies against as many individual gene targets, all made at its own laboratory facilities. With one hundred percent original products, Proteintech offers its customers sincerity, integrity, and originality. You can only buy Proteintech antibodies directly from Proteintech or via one of its approved distributors — when you receive your antibody and see the Proteintech logo on the vial, you know you hold a truly unique research reagent.

## What's Inside

### 4–5 Product Focus

- PAX8
- ALDH1A1
- RRM1
- RAB1A

### 6–11 Antibodies: 4EBP1 → Galectin 3

### 12 Product Focus

- Caspase 3
- FKBPL

### 13 Apoptosis Pathway

### 14–22 Antibodies: gamma catenin → β-ENaC

### 23 Contact Us

# PRODUCT FOCUS

## PAX8 Antibody

**Catalog Number**  
10336-1-AP

**Type**  
Rabbit Polyclonal

**Applications**  
ELISA, FC, IHC, IP, WB

**166 Publications**

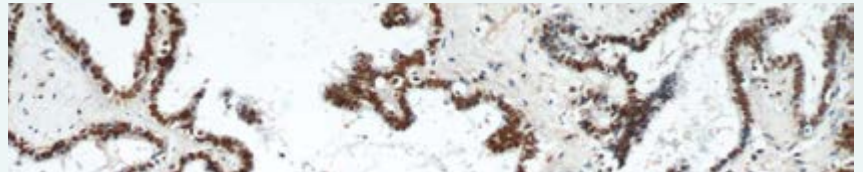
**si** Tested with siRNA

The paired box 8 (PAX8) gene is a transcription factor expressed during organogenesis of the thyroid gland, kidney, and Mullerian ducts – the precursor of the female reproductive system in developing embryos. It is thought to regulate the expression of the Wilms tumor suppressor (WT1) gene and mutations in PAX8 have been associated with Wilms tumor in the kidney, and carcinomas of the thyroid and female reproductive tract. Of the latter, PAX8 is expressed in a high percentage of ovarian serous, endometrioid, and clear cell carcinomas, but only rarely in primary ovarian mucinous adenocarcinomas. In this setting, PAX8 is also a useful marker for distinguishing ovarian carcinomas from those of mammary origin. PAX8 is shown to be significant in many more forms of cancer and research continues to shed light on its diagnostic value.

Neoplasms of the female genital tract are considered as the third most common malignancy in women, with a high rate of

morbidity and mortality. Differentiating metastatic female genital tract tumors, especially ovarian cancers from breast cancer or metastatic breast cancer that metastasize to the ovary, from primary ovarian tumor is one of the most important issues in this field. It seems that an appropriate tumor staging and management could be achieved only if the primary and metastatic type of the tumor was determined properly.

Many immunohistochemical (IHC) markers are identified to determine the primary origin of the tumors, but most of them have relatively low sensitivity and specificity. Regarding the carcinomas of Mullerian origin, few specific IHC markers have been identified. Markers such as CA-125, ER, PR, and WT-1 are often used in combination with other IHC markers to determine the possible Mullerian origin and the primary type of the tumors, but they have limited value in this field because of low sensitivity and specificity.



*Immunohistochemical of paraffin-embedded human ovary tumor using 10336-1-AP (PAX8 antibody) at dilution of 1:50 (under 10x lens).*

## ALDH1A1 Antibody

**Catalog Number**  
15910-1-AP

**Type**  
Rabbit Polyclonal

**Applications**  
ELISA, IF, IHC, IP, WB

**6 Publications**

ALDH1A1 (Aldehyde dehydrogenase family 1 member A1), also named as ALDC, ALDH1, and PUMB1, belongs to the aldehyde dehydrogenase family. The ALDH1A1 gene encodes a liver cytosolic isoform of acetaldehyde dehydrogenase, an enzyme involved in the major pathway of alcohol metabolism after alcohol dehydrogenase. ALDH1A1 plays a critical role in protection against oxidative stress-induced cytotoxicity in lens epithelial cells (PMID:19296407). And it is important for multiple biological activities including drug resistance, cell differentiation, and oxidative stress response (PMID:19025616). As a novel cancer stem cell marker, ALDH1A1 can be used for tumors

whose corresponding normal tissues express ALDH1 in relatively restricted or limited levels, such as breast, lung, ovarian, or colon cancer (PMID: 20422001). A recent publication uses our ALDH1A1 antibody (15910-1-AP) to investigate the correlation between the expression of tumor-associated macrophage markers and pathological features in Oral Squamous Cell Carcinoma by tissue microarray. The study reported that cancer stem cell markers ALDH1, CD44, and SOX2 increased successively from the normal oral mucosa to Oral Squamous Cell Carcinoma. The expressions of CD68 and CD163 were significantly associated with lymph node status, whereas ALDH1 was correlated with tumor stage.

## RRM1 Antibody

**Catalog Number**  
**10526-1-AP**

**Type**  
**Rabbit Polyclonal**

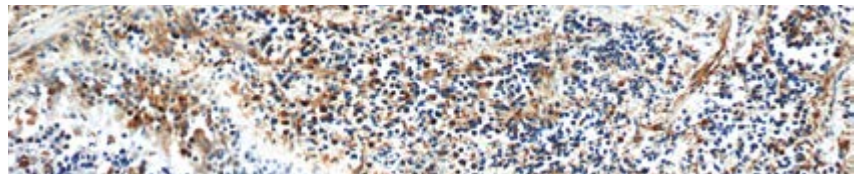
**Applications**  
**ELISA, FC, IF, IHC, IP, WB**

**29 Publications**

**si** Tested with siRNA

Success of our RRM1 antibody in non-small cell lung cancer research (RRM1 (ribonucleotide reductase subunit M1) protein is the regulatory subunit of the heterodimeric enzyme, ribonucleotide reductase. In humans, it is encoded by the RRM1 gene, located on chromosome segment 11p15.5. This region is significant in the development of non-small cell lung cancer (NSCLC) as it is typically inactivated during NSCLC oncogenesis. More than 70% of patients with NSCLC are diagnosed at the advanced stages of the disease, meaning diagnostic and prognostic markers for its improved treatment are essential. Our RRM1 antibody (10526-1-AP) has featured in two separate publications investigating its biomarker potential in NSCLC patients undergoing chemotherapy. The first paper (Wang et al., 2010) investigated the effectiveness of both RRM1 and ERCC1 (excision repair cross-complementing 1) as biomarkers for chemosensitivity and survival in Chinese NSCLC patients on platinum-based chemotherapy regimens. This study shows that immunohistochemistry (IHC)-evaluated expressions of ERCC1 and RRM1 are predictive of tumor response to platinum-based therapies. A significant correlation between the co-expression of RRM1 and ERCC1 and survival was

found; however, Chinese patients with advanced NSCLC and ERCC1-positive tumors had lower survival rates compared to those lacking ERCC1 but not RRM1. The second paper was authored by Lee et al. (Lung Cancer, 2010). This paper retrospectively assessed RRM1 expression by IHC using tissue samples from NSCLC patients. This was done to evaluate whether RRM1 is a predictor of NSCLC patient survival and response to the chemotherapy drug gemcitabine – often used in combination with platinum-based drugs to treat NSCLC. The response rates of 38 out of 40 patients were assessable; disease control rate (classed as partial response, PR and stable disease, SD) of the RRM1-positive groups was significantly lower than that of RRM1-negative groups. In patients with gemcitabine-treated advanced NSCLC, patients with RRM1-positive tumors had worse overall survival and disease control than patients with RRM1-negative tumors. The association of RRM1-positive NSCLC tissue with lower chemotherapy success rates is theorized to be attributed to RRM1's role in nucleotide excision repair (NER). NER plays a central part in DNA repair pathways and reduces the cytotoxicity of platinum-based chemotherapy drugs and nucleotide damage by UV irradiation. This means patients with lower DNA repair capacity are more chemosensitive.



*Immunohistochemical of paraffin-embedded human lung cancer using 10526-1-AP (RRM1 antibody) at dilution of 1:50 (under 10x lens).*

## RAB1A Antibody

**Catalog Number**  
**11671-1-AP**

**Type**  
**Rabbit Polyclonal**

**Applications**  
**ELISA, IHC, WB**

**4 Publications**

**si** Tested with siRNA

Rutgers University-based researcher Janice Thomas and her colleagues recently published a Cancer Cell paper that looked at the role of Rab1A in the mTORC1 pathway. mTOR signaling is essential for cell growth and metabolism, and a key stimulus of this pathway is amino acid (particularly leucine). Not only does this paper describe a new mechanism – potentially independent of other known mechanisms – for mTORC1 activation, via Rab1A and the Golgi, it also uncovers a pathological role of Rab1A

overexpression and hyperactive amino acid signaling in cancer. The work demonstrates that Rab1A overexpression is a common event that drives oncogenic transformation and malignant growth. Moreover, rapamycin sensitivity correlates with Rab1A levels, suggesting that it could determine suitability for mTORC1-targeted cancer therapy. Further study of this process could have important implications in normal cell physiology and the pathobiology and therapy of human cancer.

Proteintech recently got the chance to interview Janice Thomas about her recent work surrounding Rab1A, and found out what she thinks of Proteintech antibodies.

**Q.** What applications did you use the anti-Rab1A antibody for in the Cancer Cell paper?

*"Western blotting and immunoprecipitation."*

**Q.** How do you rate the Proteintech RAB1A antibody?

*"It is the best one on the market; it produces pristine blots with no background. (Plus it's reasonably priced!)"*

**Q.** How would you summarize Proteintech in one sentence?

*"Proteintech are now my 'go-to' antibody company."*


**Q.** Anything else to add?

*"You have most of the antibodies I need. Your products are very nice and affordable and I love the promotions – they make my research more affordable."*

4EBP1  
→ Annexin VIII

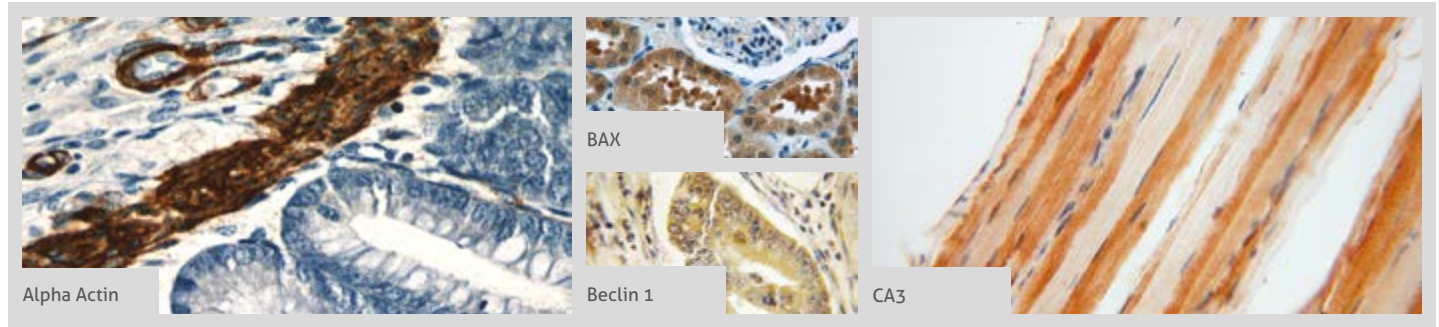
# ANTIBODY PRODUCT LIST

Antibody Name	Cat No.	Type	Applications
4EBP1	60246-1-IG	Mouse Mono	ELISA, WB, IHC
ABL2	17693-1-AP	Rabbit Poly	ELISA, WB, IF, IHC
ACE	24743-1-AP	Rabbit Poly	ELISA, WB
acid phosphatase, prostate	15840-1-AP	Rabbit Poly	ELISA, WB, IHC
acid phosphatase, prostate	24410-1-AP	Rabbit Poly	ELISA, IHC
ACPS	11594-1-AP	Rabbit Poly	ELISA, IHC, WB
ACPP	60176-1-IG	Mouse Mono	ELISA, WB, IHC
ACTA1-Specific	17521-1-AP	Rabbit Poly	ELISA, WB, IHC
ACTA2/smooth muscle actin	<b>15</b> 14395-1-AP	Rabbit Poly	ELISA, WB, IHC, IP
ACTA2/smooth muscle actin	23081-1-AP	Rabbit Poly	ELISA, WB, IHC, IP
ACTN4	19096-1-AP	Rabbit Poly	ELISA, WB, IHC, IF, IP, FC
ADCY3	19492-1-AP	Rabbit Poly	ELISA, WB, IHC, IF
Adrenomedullin	10778-1-AP	Rabbit Poly	ELISA, IHC, WB
AFF1-Specific	19975-1-AP	Rabbit Poly	ELISA, WB
AFF4	14662-1-AP	Rabbit Poly	ELISA, WB, IP
AFFP	<b>6</b> 14550-1-AP	Rabbit Poly	ELISA, WB, IHC, IP
AGR2	<b>7</b> 12275-1-AP	Rabbit Poly	ELISA, WB, IHC, IP, FC, IF
AKAP14	14622-1-AP	Rabbit Poly	ELISA, WB, IHC
Albumin	<b>5</b> 16475-1-AP	Rabbit Poly	ELISA, WB, IHC
Albumin	66051-1-IG	Mouse Mono	ELISA, WB, IHC, IF
ALDH1A1	<b>6</b> 15910-1-AP	Rabbit Poly	ELISA, WB, IHC, IP, IF
ALDH1A1	22109-1-AP	Rabbit Poly	ELISA, WB, IHC
ALDH1A1	60171-1-IG	Mouse Mono	ELISA, WB, IF
ALK,CD246	60321-1-IG	Mouse Mono	ELISA, IHC, WB
alpha 1 Antichymotrypsin / AACT	12192-1-AP	Rabbit Poly	ELISA, IHC, WB

Antibody Name	Cat No.	Type	Applications
alpha 1 Antichymotrypsin / AACT	66078-1-IG	Mouse Mono	ELISA, WB, IHC
Alpha Actin	 23660-1-AP	Rabbit Poly	ELISA, WB, IHC, IF
Alpha actin	11032-1-AP	Rabbit Poly	ELISA, WB, IP
Alpha actin	23082-1-AP	Rabbit Poly	ELISA, IHC, WB
Alpha B Crystallin	15808-1-AP	Rabbit Poly	ELISA, WB, IHC, IP
Alpha cardiac actin-specific	66125-1-IG	Mouse Mono	ELISA, WB, IHC
Alpha E catenin	12831-1-AP	Rabbit Poly	ELISA, WB, IHC, IF, FC, IP
alpha N Catenin	14362-1-AP	Rabbit Poly	ELISA, WB
Alpha-1-Antitrypsin	16382-1-AP	Rabbit Poly	ELISA, IHC, WB, IP
Alpha-1-Antitrypsin	66135-1-IG	Mouse Mono	ELISA, WB, IHC, IF
AMACR/p504S	15918-1-AP	Rabbit Poly	ELISA, IHC, WB
AMH	14461-1-AP	Rabbit Poly	ELISA, WB, IHC
androgen receptor	22089-1-AP	Rabbit Poly	ELISA, WB, IP
androgen receptor	22576-1-AP	Rabbit Poly	ELISA, WB
Angiogenin	18302-1-AP	Rabbit Poly	ELISA, WB, IHC
Angiotensinogen	23972-1-AP	Rabbit Poly	ELISA, WB, IF, IHC
ANKRD2	11821-1-AP	Rabbit Poly	ELISA, WB, IHC, IP
Annexin A1	21990-1-AP	Rabbit Poly	ELISA, WB, IP, IHC, IF
Annexin A1	55018-1-AP	Rabbit Poly	ELISA, WB, IHC, FC
Annexin A2	<b>11</b> 11256-1-AP	Rabbit Poly	ELISA, IHC, IF, IP, WB
Annexin A2	66035-1-IG	Mouse Mono	ELISA, WB, IHC, IF
Annexin A2	60051-1-IG	Mouse Mono	ELISA, WB, IF, IHC, IP, FC
Annexin V	11060-1-AP	Rabbit Poly	ELISA, WB, IP, IHC, FC, IF
Annexin VII	10154-2-AP	Rabbit Poly	ELISA, WB, IHC, IP
Annexin VIII	10462-1-AP	Rabbit Poly	ELISA, WB

**00** This number shows the amount of times our antibody has been cited in a publication.

More validation images available on our website.



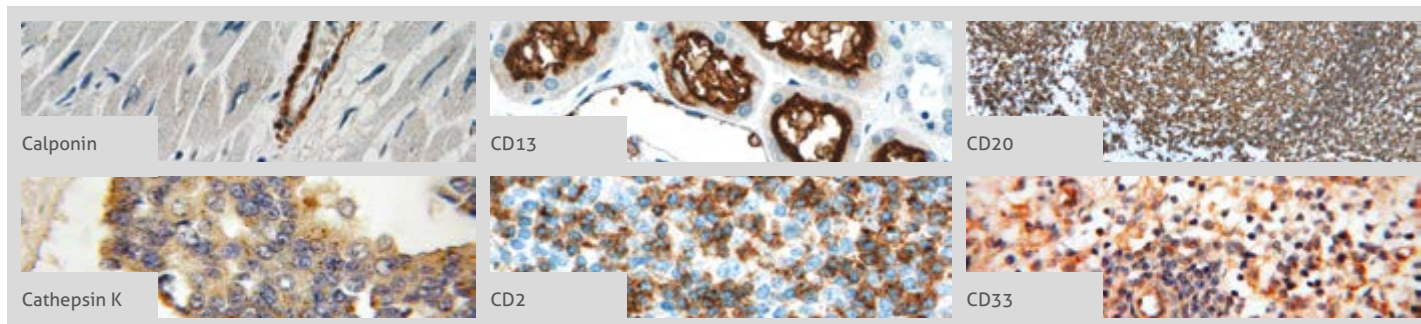
Antibody Name	Cat No.	Type	Applications
AP1,JUN,P39	10024-2-AP	Rabbit Poly	ELISA, WB, IHC, IP
AP1,JUN,P39	22114-1-AP	Rabbit Poly	ELISA, WB
APOD	10520-1-AP	Rabbit Poly	ELISA, WB, IHC
ARL13B	40 17711-1-AP	Rabbit Poly	ELISA, WB, IHC, IF, IP
ARL3	5 10961-1-AP	Rabbit Poly	ELISA, WB, IHC, IF
ARMC10	20506-1-AP	Rabbit Poly	ELISA, WB, IHC
ATP1A2-Specific	55179-1-AP	Rabbit Poly	ELISA, WB, IHC
ATP6V1E1	15280-1-AP	Rabbit Poly	ELISA, WB, IHC, IP
ATXN10	15693-1-AP	Rabbit Poly	ELISA, WB, IHC, IF
AXIN1	16541-1-AP	Rabbit Poly	ELISA, WB
AXIN2	20540-1-AP	Rabbit Poly	ELISA, WB
AXL	13196-1-AP	Rabbit Poly	ELISA, WB, IP, FC
BAX	49 50599-2-IG	Rabbit Poly	ELISA, WB, IHC, IP, FC, IF
BAX	5 23931-1-AP	Rabbit Poly	ELISA, WB, IHC
BAX	60267-1-IG	Mouse Mono	ELISA, WB
BBS10	12421-2-AP	Rabbit Poly	ELISA, WB, IF
BBS2	7 11188-2-AP	Rabbit Poly	ELISA, WB, IF, IP
BBS3	12676-1-AP	Rabbit Poly	ELISA, IF, WB, IHC, IP
BBS4	12766-1-AP	Rabbit Poly	ELISA, IHC, IF, WB
BBS5	9 14569-1-AP	Rabbit Poly	ELISA, WB, IF, IHC, IP
BBS6	13078-1-AP	Rabbit Poly	ELISA, WB, IF
BBS7	18961-1-AP	Rabbit Poly	ELISA, WB, IHC, IP
BBS8	12505-1-AP	Rabbit Poly	ELISA, WB, IP
BBS9	14460-1-AP	Rabbit Poly	ELISA, IHC, IF, WB
BCL10	50180-1-AP	Rabbit Poly	ELISA, WB, IHC
BCL10	17732-1-AP	Rabbit Poly	ELISA, WB, IHC
BCL2	53 12789-1-AP	Rabbit Poly	ELISA, WB, IP, IHC, FC
BCL2	60178-1-IG	Mouse Mono	ELISA, WB, FC, IHC

Antibody Name	Cat No.	Type	Applications
BCL2L1	23 10783-1-AP	Rabbit Poly	ELISA, IHC, IP, IF, WB
BCL2L1	66020-1-IG	Mouse Mono	ELISA, WB, IHC, IF
BCL2L14	12846-1-AP	Rabbit Poly	ELISA, WB, IHC
Beclin 1	15 11306-1-AP	Rabbit Poly	ELISA, IHC, IP, WB
Beta Tubulin	11 10094-1-AP	Rabbit Poly	ELISA, WB, IF, IP, IHC, FC
beta Tubulin	10068-1-AP	Rabbit Poly	ELISA, WB, IHC, IF, IP
Beta-2-microglobulin	13511-1-AP	Rabbit Poly	ELISA, WB, FC, IHC
beta-Catenin	13 51067-2-AP	Rabbit Poly	ELISA, IF, WB, IHC, IP
BLK	10510-1-AP	Rabbit Poly	ELISA, WB, IHC
BMI1	10832-1-AP	Rabbit Poly	ELISA, WB, IHC, IF, IP
BMI1	66161-1-IG	Mouse Mono	ELISA, WB, IHC, IF, IP
Brachyury-T	20741-1-AP	Rabbit Poly	ELISA, WB
BRCA1	20649-1-AP	Rabbit Poly	ELISA, WB, IHC, IP
BRCA1	22362-1-AP	Rabbit Poly	ELISA, IHC, WB
BRCA2	19791-1-AP	Rabbit Poly	ELISA, WB, IHC
BRIP1	20983-1-AP	Rabbit Poly	ELISA, WB
BRIP1	24436-1-AP	Rabbit Poly	ELISA, WB
BRK	18697-1-AP	Rabbit Poly	ELISA, WB, IHC, IF
BTG1	14879-1-AP	Rabbit Poly	ELISA, IHC
BubR1	11504-2-AP	Rabbit Poly	ELISA, WB, IHC
C11orf51	20409-1-AP	Rabbit Poly	ELISA, WB, IHC
C18orf8	20111-1-AP	Rabbit Poly	ELISA, WB, IHC
C4A	22233-1-AP	Rabbit Poly	ELISA, WB
CA IX	11071-1-AP	Rabbit Poly	ELISA, WB, IP, FC, IHC
CA IX	11443-1-AP	Rabbit Poly	ELISA, WB, IHC
CA3	15197-1-AP	Rabbit Poly	ELISA, WB, IHC
CABYR	12351-1-AP	Rabbit Poly	ELISA, WB, IHC
Cadherin-13	12618-1-AP	Rabbit Poly	ELISA, WB, IHC, FC, IP

00 This number shows the amount of times our antibody has been cited in a publication.

**Cadherin-16**  
 → CD38

More validation images available on our website.



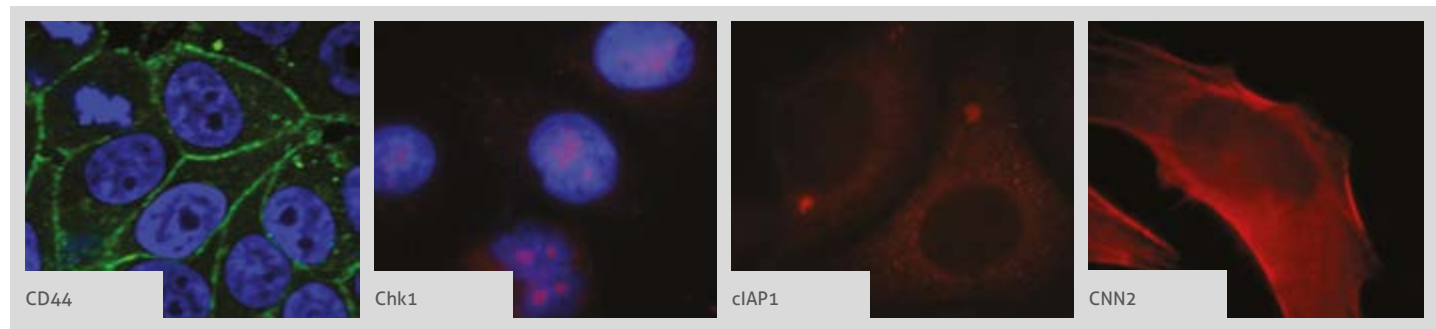
Antibody Name	Cat No.	Type	Applications
Cadherin-16	15107-1-AP	Rabbit Poly	ELISA, WB, IHC
Caldesmon	20887-1-AP	Rabbit Poly	ELISA, WB, IF, IHC
Calponin	13938-1-AP	Rabbit Poly	ELISA, WB, IHC, IP
Calponin	24855-1-AP	Rabbit Poly	ELISA, IHC, WB
Calretinin	12278-1-AP	Rabbit Poly	ELISA, WB, IHC
CaMKII alpha-Specific	20666-1-AP	Rabbit Poly	ELISA, WB, IHC
Caspase 2	24777-1-AP	Rabbit Poly	ELISA, WB
Caspase 3	19677-1-AP	Rabbit Poly	ELISA, IHC, WB
Caspase 3, p17-specific	25546-1-AP	Rabbit Poly	ELISA, WB, FC, IHC
Cathepsin B	12216-1-AP	Rabbit Poly	ELISA, WB, IHC, IF, FC
Cathepsin D	21327-1-AP	Rabbit Poly	ELISA, WB, IF, IHC
Cathepsin D	55021-1-AP	Rabbit Poly	ELISA, WB, IHC
Cathepsin K	11239-1-AP	Rabbit Poly	ELISA, IHC, WB, IP
Caveolin-1	16447-1-AP	Rabbit Poly	ELISA, WB, IHC, IP
Caveolin-1	66067-1-IG	Mouse Mono	ELISA, WB, IHC
CCAR2	22638-1-AP	Rabbit Poly	ELISA, WB, IF, IHC
CD10,MME	23782-1-AP	Rabbit Poly	ELISA, FC, IHC
CD11B/Integrin alpha M	20991-1-AP	Rabbit Poly	ELISA, WB, IHC
CD11B/Integrin alpha M	21851-1-AP	Rabbit Poly	ELISA, IHC
CD11c/Integrin alpha X	17342-1-AP	Rabbit Poly	ELISA, WB, IHC
CD11c/Integrin alpha X	60258-1-IG	Mouse Mono	ELISA, IHC
CD13	14553-1-AP	Rabbit Poly	ELISA, WB, IHC
CD133	18470-1-AP	Rabbit Poly	ELISA, WB
CD133	18495-1-AP	Rabbit Poly	ELISA, WB
CD133-1,2,3	19946-1-AP	Rabbit Poly	ELISA, WB
CD133-1,2,3,5,7	19945-1-AP	Rabbit Poly	ELISA, WB
CD138/Syndecan-1	10593-1-AP	Rabbit Poly	ELISA, WB, IHC
CD138/Syndecan-1	60185-1-IG	Mouse Mono	ELISA, WB

Antibody Name	Cat No.	Type	Applications
CD138/Syndecan-1	60185-2-IG	Mouse Mono	ELISA, WB, IHC
CD14	17000-1-AP	Rabbit Poly	ELISA, IHC, WB
CD14	60253-1-IG	Mouse Mono	ELISA, WB
CD146/MCAM	17564-1-AP	Rabbit Poly	ELISA, IHC, WB, IP
CD146/MCAM	66153-1-IG	Mouse Mono	ELISA, WB, IHC, FC
CD147	11989-1-AP	Rabbit Poly	ELISA, WB, IHC, IP
CD154	16668-1-AP	Rabbit Poly	ELISA, WB, IHC, IP
CD1A	17325-1-AP	Rabbit Poly	ELISA, WB
CD1A	60173-1-IG	Mouse Mono	ELISA, WB
CD2	10299-1-AP	Rabbit Poly	ELISA, WB, FC
CD2	60005-2-IG	Mouse Mono	ELISA, WB
CD20	24828-1-AP	Rabbit Poly	ELISA, WB, IHC, FC
CD20	60271-1-IG	Mouse Mono	ELISA, WB, IHC, FC
CD22	66103-1-IG	Mouse Mono	ELISA, WB, IHC
CD23	60208-1-IG	Mouse Mono	ELISA, WB, IHC
CD23	60208-2-IG	Mouse Mono	ELISA, WB, IHC
CD247	12837-2-AP	Rabbit Poly	ELISA, WB, IHC, FC
CD27	11121-1-AP	Rabbit Poly	ELISA, WB, FC
CD3 delta	16669-1-AP	Rabbit Poly	ELISA, WB, IHC, FC
CD3 delta	60194-1-IG	Mouse Mono	ELISA, WB
CD3 epsilon	17617-1-AP	Rabbit Poly	ELISA, WB, FC, IHC
CD3 epsilon	60181-1-IG	Mouse Mono	ELISA, WB, IHC, FC
CD3 gamma	21120-1-AP	Rabbit Poly	ELISA, WB, FC, IHC
CD31	11265-1-AP	Rabbit Poly	ELISA, IP, IHC, WB
CD31	66065-1-IG	Mouse Mono	ELISA, WB, IHC
CD33	17425-1-AP	Rabbit Poly	ELISA, WB, IHC, IF
CD34	14486-1-AP	Rabbit Poly	ELISA, WB, IHC
CD38	25284-1-AP	Rabbit Poly	ELISA, WB, IHC



**CD38/Syndecan-1**  
→ CUL1

More validation images available on our website.

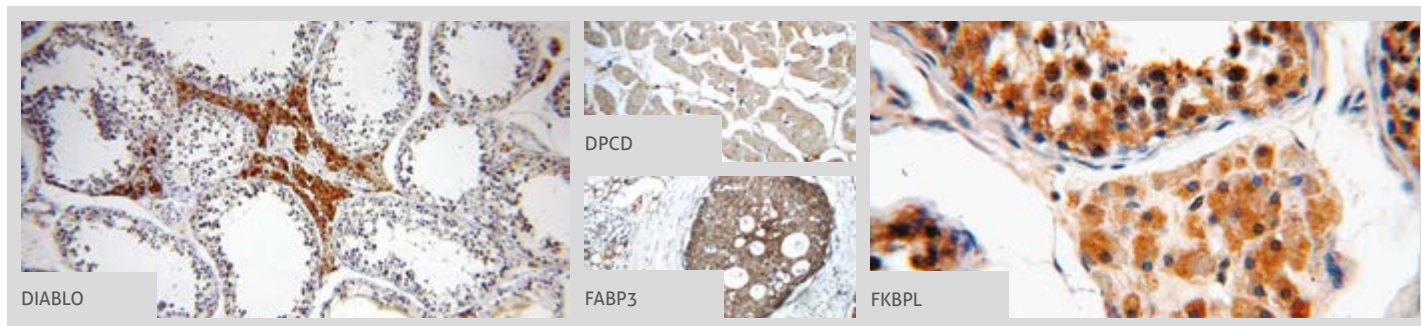


Antibody Name	Cat No.	Type	Applications
CD38/Syndecan-1	60006-1-IG	Mouse Mono	ELISA, IF, WB
CD4	11056-2-AP	Rabbit Poly	ELISA, WB, IP
CD4	19068-1-AP	Rabbit Poly	ELISA, WB
CD43	13959-1-AP	Rabbit Poly	ELISA, WB, IHC
CD44	15675-1-AP	Rabbit Poly	ELISA, WB, IHC, IP, FC, IF
CD44	60224-1-IG	Mouse Mono	ELISA, WB, IHC, IF, FC
CD45	20103-1-AP	Rabbit Poly	ELISA, IHC, WB, FC
CD5	17227-1-AP	Rabbit Poly	ELISA, WB
CD68-Specific	16192-1-AP	Rabbit Poly	ELISA, WB
CD7	11320-1-AP	Rabbit Poly	ELISA, WB, IHC
CD7	60209-2-IG	Mouse Mono	ELISA, WB, IHC
CD71	66180-1-IG	Mouse Mono	ELISA, IHC, WB, IF, FC, IP
CD79A	22349-1-AP	Rabbit Poly	ELISA, WB
CD82	10248-1-AP	Rabbit Poly	ELISA, IHC, WB
CD8B	21256-1-AP	Rabbit Poly	ELISA, WB
CD9	20597-1-AP	Rabbit Poly	ELISA, WB, IHC, FC
CD9	60232-1-IG	Mouse Mono	ELISA, WB, IHC
CD94	13332-1-AP	Rabbit Poly	ELISA, WB, IHC
CD99	23079-1-AP	Rabbit Poly	ELISA, WB, IHC, FC
CDC25B	10644-1-AP	Rabbit Poly	ELISA, WB, IHC
CDC6	66021-1-IG	Mouse Mono	ELISA, WB, IF
CDK2AP1	13060-2-AP	Rabbit Poly	ELISA, WB
CDK4	11026-1-AP	Rabbit Poly	ELISA, WB, IHC, IF, FC, IP
CDX2	60243-1-IG	Mouse Mono	ELISA, WB
CEA	10421-1-AP	Rabbit Poly	ELISA, IHC
CENPH	12841-1-AP	Rabbit Poly	ELISA, WB
Chk1	10362-1-AP	Rabbit Poly	ELISA, WB, IF, FC
Chk1	60277-1-IG	Mouse Mono	ELISA, WB, IHC

Antibody Name	Cat No.	Type	Applications
Chromogranin A	10529-1-AP	Rabbit Poly	ELISA, IHC
Chromogranin A	23342-1-AP	Rabbit Poly	ELISA, IHC
Chromogranin A	60135-1-IG	Mouse Mono	ELISA, WB, IHC
Chromogranin B	14968-1-AP	Rabbit Poly	ELISA, WB
cIAP1	10022-1-AP	Rabbit Poly	ELISA, WB, IHC, IF
cIAP2	24304-1-AP	Rabbit Poly	ELISA, WB, IHC
CITED2	15021-1-AP	Rabbit Poly	ELISA, WB
c-Kit/CD117	18696-1-AP	Rabbit Poly	ELISA, WB, IHC, FC
Clusterin	12289-1-AP	Rabbit Poly	ELISA, WB, IHC, IP
Clusterin	66109-1-IG	Mouse Mono	ELISA, WB, IHC
c-Met	19971-1-AP	Rabbit Poly	ELISA, WB, IHC
c-Myc	10057-1-AP	Rabbit Poly	ELISA, WB
c-Myc	10828-1-AP	Rabbit Poly	ELISA, IHC, WB, IP
CNN2	21073-1-AP	Rabbit Poly	ELISA, WB, IF, IHC
CNN3	11509-1-AP	Rabbit Poly	ELISA, WB, IHC, IF
CNTFR	10796-1-AP	Rabbit Poly	ELISA, WB
Collagen Type IV	10807-1-AP	Rabbit Poly	ELISA, WB, IF
Collagen Type IV	19797-1-AP	Rabbit Poly	ELISA, WB, IF
Collagen Type IV	22014-1-AP	Rabbit Poly	ELISA, WB
Collagen Type IV	24460-1-AP	Rabbit Poly	ELISA, IHC
Collagen Type IV	55131-1-AP	Rabbit Poly	ELISA, IHC
CPS1	24513-1-AP	Rabbit Poly	ELISA, WB
Creatine kinase B type	15137-1-AP	Rabbit Poly	ELISA, WB, IHC
Creatine kinase B type-Specific	18713-1-AP	Rabbit Poly	ELISA, WB, IHC
CREB1	12208-1-AP	Rabbit Poly	ELISA, IP, WB, IF, IHC, FC
CSPP1	11931-1-AP	Rabbit Poly	ELISA, WB, IF
c-SRC	60315-1-IG	Mouse Mono	ELISA, WB, IHC
CUL1	12895-1-AP	Rabbit Poly	ELISA, WB, IHC, IP


00 This number shows the amount of times our antibody has been cited in a publication.

**CUL3**  
 → DOPA decarboxylase

 More validation images available on our website. 


Antibody Name	Cat No.	Type	Applications
CUL3	11107-1-AP	Rabbit Poly	ELISA, IHC, WB
CXCL13	10927-1-AP	Rabbit Poly	ELISA, WB, IHC
CXCL8/IL8	60141-2-IG	Mouse Mono	ELISA, WB
Cyclin A1	13295-1-AP	Rabbit Poly	ELISA, WB, IHC
Cyclin A2	18202-1-AP	Rabbit Poly	ELISA, WB, IF, IP
Cyclin D1	<b>18</b> 60186-1-IG	Mouse Mono	ELISA, WB, IF
Cyclin E1	<b>9</b> 11554-1-AP	Rabbit Poly	ELISA, WB
Cyclin E2	11935-1-AP	Rabbit Poly	ELISA, WB, IHC, IF, FC
CYP19A1	16554-1-AP	Rabbit Poly	ELISA, WB, IHC
Cystatin C	12245-1-AP	Rabbit Poly	ELISA, WB, IHC
Cytokeratin 10	18343-1-AP	Rabbit Poly	ELISA, IHC
Cytokeratin 10-specific	16855-1-AP	Rabbit Poly	ELISA, IHC
Cytokeratin 13	10164-2-AP	Rabbit Poly	ELISA, WB, IHC
Cytokeratin 13-Specific	17515-1-AP	Rabbit Poly	ELISA, WB, IHC
Cytokeratin 14	10143-1-AP	Rabbit Poly	ELISA, WB, IHC, IF, IP
Cytokeratin 14	22221-1-AP	Rabbit Poly	ELISA, WB, IHC
Cytokeratin 14	60320-1-IG	Mouse Mono	ELISA, WB
Cytokeratin 15	10137-1-AP	Rabbit Poly	ELISA, WB, IP, IHC
Cytokeratin 15	60247-1-IG	Mouse Mono	ELISA, WB, IF
Cytokeratin 16	17265-1-AP	Rabbit Poly	ELISA, WB, IHC
Cytokeratin 17	18502-1-AP	Rabbit Poly	ELISA, WB, IF, FC, IHC
Cytokeratin 17	22230-1-AP	Rabbit Poly	ELISA, WB, IHC, IF
Cytokeratin 17-Specific	17516-1-AP	Rabbit Poly	ELISA, WB, IHC, IF, FC
Cytokeratin 18	<b>15</b> 10830-1-AP	Rabbit Poly	ELISA, WB, IP, IHC, IF, FC
Cytokeratin 18	18708-1-AP	Rabbit Poly	ELISA, WB, IF, IHC, IP
Cytokeratin 18	66187-1-IG	Mouse Mono	ELISA, WB, FC, IF, IHC
Cytokeratin 19	<b>8</b> 10712-1-AP	Rabbit Poly	ELISA, WB, FC, IHC
Cytokeratin 19	60187-1-IG	Mouse Mono	ELISA, WB, IHC

Antibody Name	Cat No.	Type	Applications
Cytokeratin 19	14965-1-AP	Rabbit Poly	ELISA, WB, IHC, IF
Cytokeratin 19-specific	16858-1-AP	Rabbit Poly	ELISA, WB, IHC
Cytokeratin 1-specific	16848-1-AP	Rabbit Poly	ELISA, WB, IHC, IP, IF
Cytokeratin 20	17329-1-AP	Rabbit Poly	ELISA, WB, IF, IHC
Cytokeratin 20	60183-1-IG	Mouse Mono	ELISA, WB, IHC
Cytokeratin 7	15539-1-AP	Rabbit Poly	ELISA, IF, WB, IHC, FC
Cytokeratin 7	22208-1-AP	Rabbit Poly	ELISA, WB, IF, FC, IHC
Cytokeratin 7-specific	17513-1-AP	Rabbit Poly	ELISA, IHC, WB, IF
Cytokeratin 7-specific	16857-1-AP	Rabbit Poly	ELISA, WB, IHC
Cytokeratin 8	17514-1-AP	Rabbit Poly	ELISA, WB, IHC
Cytokeratin 8	10384-1-AP	Rabbit Poly	ELISA, WB, IHC, FC, IF
Cytokeratin 8	60274-1-IG	Mouse Mono	ELISA, WB, IHC
DAZL	12633-1-AP	Rabbit Poly	ELISA, WB
DEFB1	14738-1-AP	Rabbit Poly	ELISA, IHC
Desmin	60226-1-IG	Mouse Mono	ELISA, WB, IHC
Desmin	16520-1-AP	Rabbit Poly	ELISA, WB, IF, IHC, IP
Desmoplakin	25318-1-AP	Rabbit Poly	ELISA, WB, IHC, IF
DHH	13889-1-AP	Rabbit Poly	ELISA, WB
DIABLO	 10434-1-AP	Rabbit Poly	ELISA, WB, IHC, IP
DISC1	15500-1-AP	Rabbit Poly	ELISA, WB, IHC, IF
DLEC1	20027-1-AP	Rabbit Poly	ELISA, WB, IHC
DLEU1	11860-1-AP	Rabbit Poly	ELISA, WB, IHC
DNAI1	12756-1-AP	Rabbit Poly	ELISA, WB
DNAI2	17533-1-AP	Rabbit Poly	ELISA, WB, IHC
DNAL1	15809-1-AP	Rabbit Poly	ELISA, WB
DNTT,TDI	10301-1-AP	Rabbit Poly	ELISA
DNTT,TDI	17382-1-AP	Rabbit Poly	ELISA, IHC
DOPA decarboxylase	10166-1-AP	Rabbit Poly	ELISA, WB, IHC, IP

Antibody Name	Cat No.	Type	Applications
DPCD	 20936-1-AP	Rabbit Poly	ELISA, IHC, WB
DPP4	10940-1-AP	Rabbit Poly	ELISA, WB, IHC
Dynamitin	60257-1-IG	Mouse Mono	ELISA, WB, IHC
Dysadherin	12166-1-AP	Rabbit Poly	ELISA, WB, IHC
E-cadherin	<b>14</b> 20874-1-AP	Rabbit Poly	ELISA, IHC, WB, IP, FC, IF
E-cadherin	20648-1-AP	Rabbit Poly	ELISA, WB, IF, IHC, FC
EEF1B2	<b>5</b> 10483-1-AP	Rabbit Poly	ELISA, WB, IHC
EEF1B2	10095-2-AP	Rabbit Poly	ELISA, WB, IHC, IF, IP
EGFR	22542-1-AP	Rabbit Poly	ELISA, WB, IHC, FC
EGFR	51071-2-AP	Rabbit Poly	ELISA, WB, IHC, IP, IF
EGFR-Specific	<b>8</b> 18986-1-AP	Rabbit Poly	ELISA, WB, IP, IF
EGR1	55117-1-AP	Rabbit Poly	ELISA, WB, IF, IHC
EL24	20456-1-AP	Rabbit Poly	ELISA, WB
EIF4A3	17504-1-AP	Rabbit Poly	ELISA, WB, IHC, IF, IP
EIF4A3	10463-1-AP	Rabbit Poly	ELISA, WB, IP
ELAC2	10071-1-AP	Rabbit Poly	ELISA, WB
ELL	51044-1-AP	Rabbit Poly	ELISA, WB, IHC
ELL2	12727-1-AP	Rabbit Poly	ELISA, WB
Endoglin/CD105	10862-1-AP	Rabbit Poly	ELISA, WB, IP, IHC
Endothelin 1	12191-1-AP	Rabbit Poly	ELISA, WB, IHC
EPCAM	21050-1-AP	Rabbit Poly	ELISA, WB, IHC
EPO	17908-1-AP	Rabbit Poly	ELISA, WB, IHC
ER	21244-1-AP	Rabbit Poly	ELISA, IHC, WB
ERBB3	10369-1-AP	Rabbit Poly	ELISA, IHC
ERBB4	19943-1-AP	Rabbit Poly	ELISA, WB, IHC
ERCC1	14586-1-AP	Rabbit Poly	ELISA, WB, IHC, IP
ERCC2	10818-1-AP	Rabbit Poly	ELISA, WB, IHC, IP
ERG	14356-1-AP	Rabbit Poly	ELISA, IHC, WB
ESR2	14007-1-AP	Rabbit Poly	ELISA, IHC, WB
ESR2	60197-1-IG	Mouse Mono	ELISA, WB
ESR2 Beta-3	55441-1-AP	Rabbit Poly	ELISA, IHC
ESR2 Beta-6	55471-1-AP	Rabbit Poly	ELISA, IHC, WB
ETS1	12118-1-AP	Rabbit Poly	ELISA, WB
ETS2	12280-1-AP	Rabbit Poly	ELISA, IP, WB
ETV4	10684-1-AP	Rabbit Poly	ELISA, WB, IHC
ETV5	13011-1-AP	Rabbit Poly	ELISA, WB

Antibody Name	Cat No.	Type	Applications
ETV6	13182-1-AP	Rabbit Poly	ELISA, WB
EWS	55191-1-AP	Rabbit Poly	ELISA, WB
FABP3	 10676-1-AP	Rabbit Poly	ELISA, WB, IHC
FABP3	60280-1-IG	Mouse Mono	ELISA, WB
FABP4	12802-1-AP	Rabbit Poly	ELISA, WB, IHC
FABP4	15872-1-AP	Rabbit Poly	ELISA, WB, IHC, IF
Factor XIIIa	17223-1-AP	Rabbit Poly	ELISA, WB
FAK	<b>6</b> 12636-1-AP	Rabbit Poly	ELISA, IHC, IP, WB
FAM129A	21333-1-AP	Rabbit Poly	ELISA, WB, IF, IHC
FAS/CD95	<b>7</b> 13098-1-AP	Rabbit Poly	ELISA, WB, IHC, IP, FC
FAS/CD95	60196-1-IG	Mouse Mono	ELISA, WB, FC
Fascin	14384-1-AP	Rabbit Poly	ELISA, IHC, WB
FASN	10624-2-AP	Rabbit Poly	ELISA, IF, IP, WB, FC
FBLIM1	13349-1-AP	Rabbit Poly	ELISA, WB, IHC
FCN1	11775-1-AP	Rabbit Poly	ELISA, WB
FER	25287-1-AP	Rabbit Poly	ELISA, WB, IHC, FC, IF
Ferritin light chain	10727-1-AP	Rabbit Poly	ELISA, WB, IP, IHC, IF
FGF5	18171-1-AP	Rabbit Poly	ELISA, IHC, WB
FGFR2	13042-1-AP	Rabbit Poly	ELISA, WB, IF
FGFR4	11098-1-AP	Rabbit Poly	ELISA, WB, IHC
Fibronectin	<b>7</b> 15613-1-AP	Rabbit Poly	ELISA, WB, IHC, IP
Fibronectin	66042-1-IG	Mouse Mono	ELISA, WB
FKBP1A	10273-1-AP	Rabbit Poly	ELISA, IHC, WB
FKBPL	 <b>10</b> 10060-1-AP	Rabbit Poly	ELISA, WB, IHC, IP
FKBPL	23369-1-AP	Rabbit Poly	ELISA, WB
FKBPL	60030-1-IG	Mouse Mono	ELISA, WB
FLCN	11236-2-AP	Rabbit Poly	ELISA, WB, IHC, IP
FLI1	11347-1-AP	Rabbit Poly	ELISA, WB
FRK	16197-1-AP	Rabbit Poly	ELISA, WB, IHC, IF
FUCA1	16420-1-AP	Rabbit Poly	ELISA, IHC
FUS/TLS	<b>22</b> 11570-1-AP	Rabbit Poly	ELISA, IF, IP, WB, IHC, FC
FUS/TLS	<b>5</b> 60160-1-IG	Mouse Mono	ELISA, WB, IF, IHC, IP
FUT9	60230-1-IG	Mouse Mono	ELISA, WB, IHC
GADD34	<b>13</b> 10449-1-AP	Rabbit Poly	ELISA, WB, IHC
Galectin-3	14979-1-AP	Rabbit Poly	ELISA, IP, IHC, WB, IF
Galectin-3	60207-1-IG	Mouse Mono	ELISA, WB, IF, IHC

## Caspase3 Antibody

**Catalog Number**  
**19677-1-AP**

**Type**  
**Rabbit Polyclonal**

**Applications**  
**ELISA, IHC, WB**

**72 Publications**

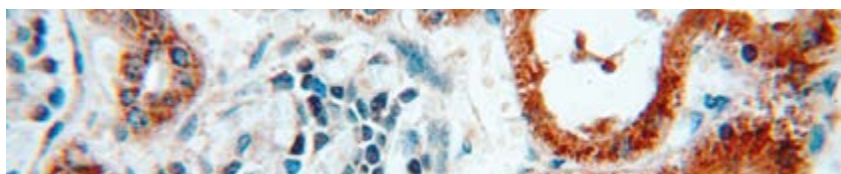
**si Tested with siRNA**

Apoptosis plays a critical role in normal biological processes requiring cell removal, including differentiation, development, and homeostasis. Stress responses (such as heat shock, ischemia, unfolded proteins, and viral infection) cause badly damaged cells to undergo apoptosis. In cell culture, growth factor withdrawal and many known experimental compounds have a similar effect. An acquired defect in apoptosis activation often leads to uncontrolled cell growth, oncogenesis, and cancer. Ligand-bound tumor necrosis factor (TNF) receptors initiate apoptosis by recruiting FADD and other death domain adaptor proteins that then recruit and activate caspases.

Pro- and anti-apoptotic proteins are probably the first caspase targets following an apoptotic stimulus. These cleavage events participate in signal amplification and inhibitor inactivation. For example, transactivation of procaspases could generate sufficient proteolytic activity to

overwhelm endogenous caspase inhibitors such as inhibitor of apoptosis proteins. Caspase 3 cleaves Bcl-2 and Bcl-XL, which destroys the antiapoptotic function of these proteins and releases C-terminal fragments that are pro-apoptotic.

Caspase 3 is involved in the activation cascade of caspases responsible for apoptosis execution. The CASP3 protein is a member of the cysteine-aspartic acid protease (caspase) family. Sequential activation of caspases plays a central role in the execution phase of cell apoptosis. Caspases exist as inactive proenzymes that undergo proteolytic processing at conserved aspartic residues to produce two subunits, large and small, that dimerize to form the active enzyme. This protein cleaves and activates caspases 6 and 7; and the protein itself is processed and activated by caspases 8, 9, and 10.



*Immunohistochemical of paraffin-embedded human kidney using 19677-1-AP (CASP3 antibody) at dilution of 1:50 (under 40x lens).*

## FKBPL Antibody

**Catalog Number**  
**10060-1-AP**

**Type**  
**Rabbit Polyclonal**

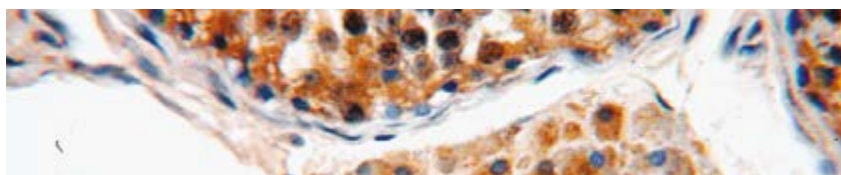
**Applications**  
**ELISA, IHC, IP, WB**

**10 Publications**

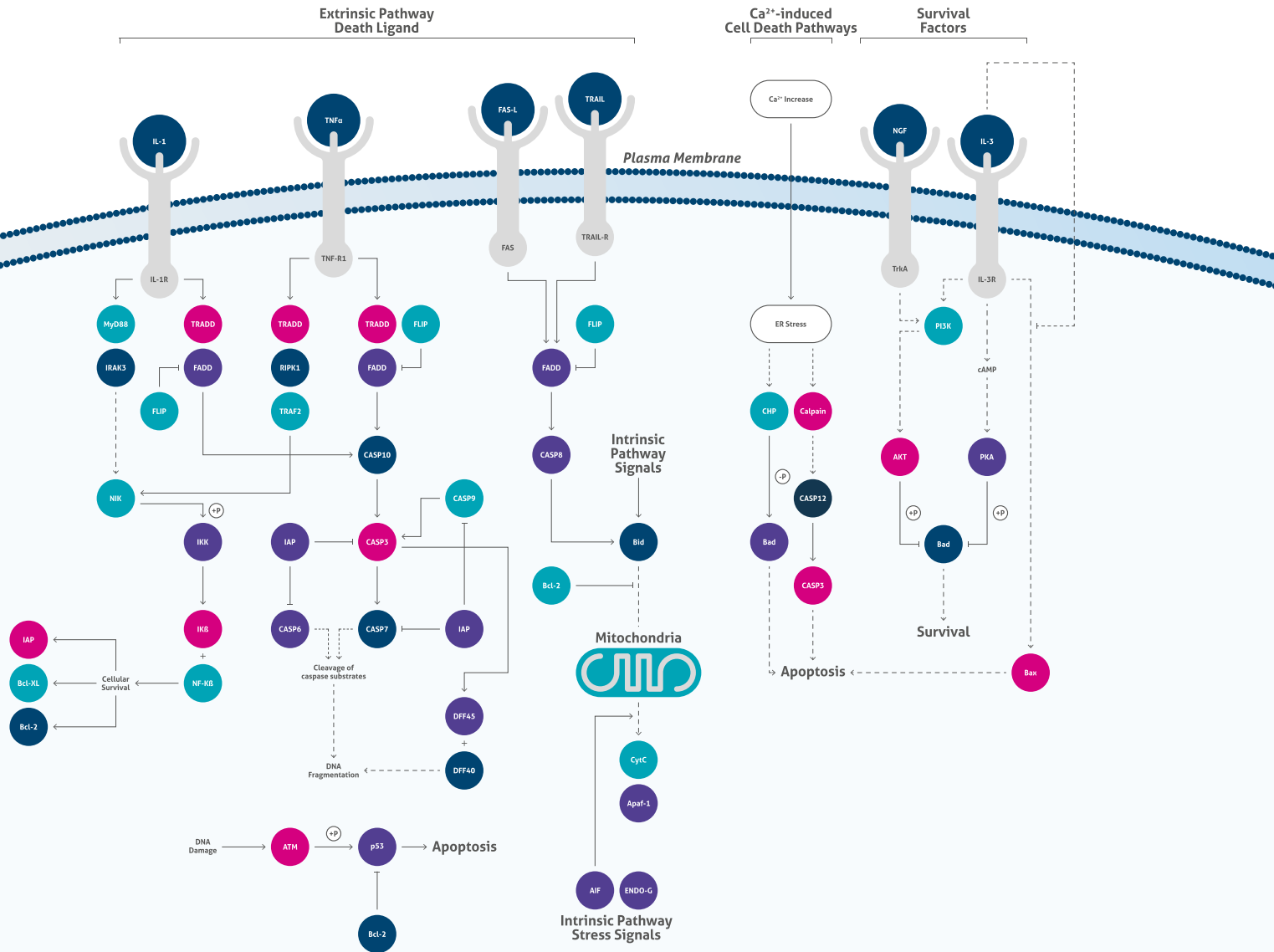
**si Tested with siRNA**

FKBPL (FK506-binding protein-like) is an immunophilin that regulates steroid receptor signaling. It has been reported to bind with Hsp90 (heat shock protein 90) as a co-chaperone and overexpression of FKBPL was shown to decrease leukemic cell proliferation by inducing a G0/G1 block. Proteintech's FKBPL polyclonal antibody (10060-1-AP) has played a key role in many publications: In early 2010, McKeen et al. successfully used our FKBPL antibody again in a Cancer Research paper. The researchers found that FKBPL regulates estrogen receptor (ER $\alpha$ ) signaling and determines the response of breast cancer to endocrine therapy. Breast cancer cells stably overexpressing FKBPL became dependent on estrogen for their growth and were dramatically more sensitive to anti-estrogen treatments. Steroid receptor signaling FKBPL has been reported to co-localize and interact with the components of the Hsp90-glucocorticoid receptor (GR; NR3C1) complex. In an Endocrinology paper, McKeen et

al. reported the appearance of FKBPL/GR co-localization in the cytoplasm and nucleus in DU145 prostate tumor cells using immunofluorescence. The interaction of FKBPL with GR was confirmed by Western blotting after co-immunoprecipitation. Hsp90 also immunoprecipitated with FKBPL captured by our FKBPL antibody. FKBPL and p21 stability FKBPL interacts with Hsp90 via its TPR (tetratricopeptide repeat) domains and is key to the stabilization of newly synthesized p21 (CDKN1A/CIP1/WAF1). GTSE-1 (G2 and S phase-expressed protein 1) has recently been described as an interacting partner of the Hsp90-FKBPL-p21 complex. In a JBC paper this year, Bublik et al. reported that GTSE-1 protects p21 from proteasomal degradation as part of this complex. GTSE-1 was found to co-fractionate with p21 and FKBPL in U2OS and H1299 cell extracts and could also be co-immunoprecipitated with both proteins.



*Immunohistochemical of paraffin-embedded human testis using 10060-1-AP (FKBPL antibody) at dilution of 1:50 (under 40x lens).*



## Apoptosis Pathway

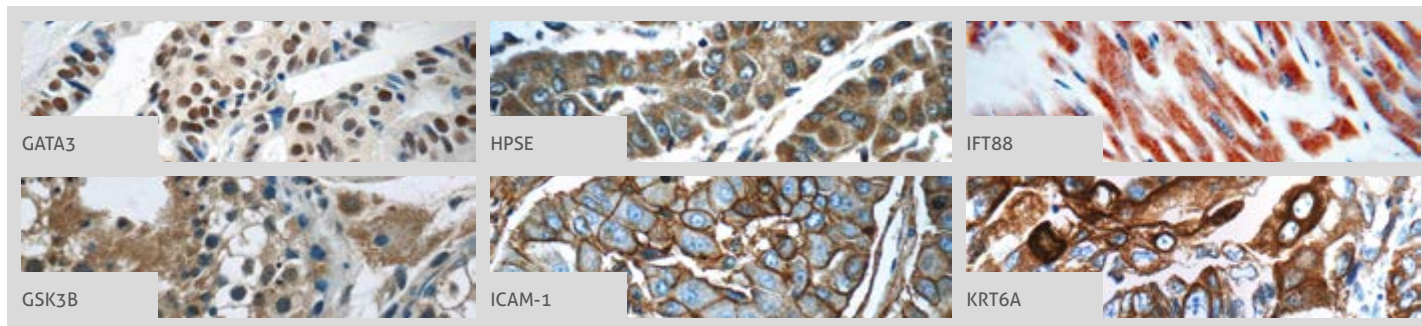
Legend	
—	Association
→	Directly Activates
- - - - ->	Indirectly Activates
—	Inhibits
(P)	Phosphorylates


Apoptosis, derived from the Greek word for “falling off” or “dropping off” (like leaves from a tree), is defined by distinct morphological and biochemical changes. Apoptosis plays a crucial role not just in normal development, but also in cancer or neurological diseases. Two main pathways lead to apoptosis: 1. the extrinsic pathway via death receptors and 2. the intrinsic pathway via the mitochondria. Both pathways lead to the activation of caspases (cysteine aspartic acid-specific proteases) which are expressed as inactive precursors or zymogens (pro-caspases) and are proteolytically


processed to an active state following an apoptotic stimulus. To date, 14 mammalian caspases have been identified and these can be roughly divided into three functional groups: apoptosis initiators (including caspase-2, -9, -8, -10), apoptosis effectors (including caspase-3, -6, -7), and cytokine maturation caspases (including caspase-1, -4, -5, -11, -12, -13, -14).

gamma catenin  
→ HYDIN













More validation images available on our website. 









Antibody Name	Cat No.	Type	Applications
gamma catenin	11146-1-AP	Rabbit Poly	ELISA, IHC, WB
Gastrin	18143-1-AP	Rabbit Poly	ELISA, IHC
Gastrokine 1	14494-1-AP	Rabbit Poly	ELISA, WB, IHC
Gastrokine 1	19344-1-AP	Rabbit Poly	ELISA, WB, IHC
GATA3  <b>6</b>	10417-1-AP	Rabbit Poly	ELISA, WB, IHC
GCDFP-15/PIP	16068-1-AP	Rabbit Poly	ELISA, IHC
G-CSFR	18310-1-AP	Rabbit Poly	ELISA, WB
GFAP <b>8</b>	16825-1-AP	Rabbit Poly	ELISA, WB, IHC
GFAP	60190-1-IG	Mouse Mono	ELISA, WB, IHC
GFAP	23935-1-AP	Rabbit Poly	ELISA, WB, IHC
GIPC1	14822-1-AP	Rabbit Poly	ELISA, WB, IHC, IP, IF
GIPC2	12832-1-AP	Rabbit Poly	ELISA, WB
GKN1	60130-1-IG	Mouse Mono	ELISA, WB
GLI3-Specific	19949-1-AP	Rabbit Poly	ELISA, WB, IF, IHC, FC, IP
GLO1	15140-1-AP	Rabbit Poly	ELISA, WB
GLO1	18477-1-AP	Rabbit Poly	ELISA, WB
Glucagon	15954-1-AP	Rabbit Poly	ELISA, IHC
Glypican 3	11145-1-AP	Rabbit Poly	ELISA, WB
Glypican 3	25175-1-AP	Rabbit Poly	ELISA, IHC, WB, IF
GNAS	10150-2-AP	Rabbit Poly	ELISA, WB
GP73/GOLPH2	15126-1-AP	Rabbit Poly	ELISA, WB, IF, IHC, FC, IP
GPI	15171-1-AP	Rabbit Poly	ELISA, WB, IP
Growth hormone	17867-1-AP	Rabbit Poly	ELISA, WB
Growth hormone	55243-1-AP	Rabbit Poly	ELISA, WB, IHC
GSK3B 	24198-1-AP	Rabbit Poly	ELISA, WB, IF, IHC, FC
GSTP1 <b>7</b>	15902-1-AP	Rabbit Poly	ELISA, WB, IHC, IF, IP, FC
GTF2H1	10173-1-AP	Rabbit Poly	ELISA, WB
GUSB	16332-1-AP	Rabbit Poly	ELISA, WB, IHC

Antibody Name	Cat No.	Type	Applications
GZMB	13588-1-AP	Rabbit Poly	ELISA, WB, IHC, IF
hamartin	20988-1-AP	Rabbit Poly	ELISA, WB, IHC, IF, IP
hCG alpha	25014-1-AP	Rabbit Poly	ELISA, IHC
HCK	11600-1-AP	Rabbit Poly	ELISA, WB, IHC
HDAC8 <b>5</b>	17548-1-AP	Rabbit Poly	ELISA, WB, IP
HDGF <b>6</b>	11344-1-AP	Rabbit Poly	ELISA, IP, WB, IHC
HDGF	60064-1-IG	Mouse Mono	ELISA, WB, IHC, IF
Hemoglobin epsilon	12361-1-AP	Rabbit Poly	ELISA, WB, IHC
Hemoglobin epsilon-Specific	19994-1-AP	Rabbit Poly	ELISA, WB
Hemoglobin epsilon-Specific	66151-1-IG	Mouse Mono	ELISA, WB
HER2/ErbB2	18299-1-AP	Rabbit Poly	ELISA, WB, IHC, FC, IP
HER2/ErbB2	51105-1-AP	Rabbit Poly	ELISA, WB, IHC
HER2/ErbB2	60311-1-IG	Mouse Mono	ELISA, IHC, FC
HIF1AN	10646-1-AP	Rabbit Poly	ELISA
Histone H2A.X <b>6</b>	10856-1-AP	Rabbit Poly	ELISA, WB, IHC, IF, FC
HMGA2	20795-1-AP	Rabbit Poly	ELISA, WB, IF
HNF1B <b>5</b>	12533-1-AP	Rabbit Poly	ELISA, WB, IHC
HNRNPA2B1	14813-1-AP	Rabbit Poly	ELISA, WB, IHC, IP
HPSE 	24529-1-AP	Rabbit Poly	ELISA, WB, IHC, IF
HPSE	16673-1-AP	Rabbit Poly	ELISA, IHC, WB
HRAS-Specific	18295-1-AP	Rabbit Poly	ELISA, IF, IHC, WB, FC
HSD17B11	16303-1-AP	Rabbit Poly	ELISA, WB, IHC
HSD17B11	17301-1-AP	Rabbit Poly	ELISA, WB, IHC
HSD17B7	14854-1-AP	Rabbit Poly	ELISA, WB
HSP47	10875-1-AP	Rabbit Poly	ELISA, IHC, WB, FC, IF
HSP70	10995-1-AP	Rabbit Poly	ELISA, IHC, WB, IF, FC, IP
HSP90	60318-1-IG	Mouse Mono	ELISA, WB, FC
HYDIN	24741-1-AP	Rabbit Poly	ELISA, IHC, WB

**00** This number shows the amount of times our antibody has been cited in a publication.

Antibody Name	Cat No.	Type	Applications
IBA1	 10904-1-AP	Rabbit Poly	ELISA, WB, IF, IP, IHC
ICAM-1	 10831-1-AP	Rabbit Poly	ELISA, WB, IHC, IP, FC
ICAM-1	15364-1-AP	Rabbit Poly	ELISA, WB, IHC, FC, IP
ICAM-1	60299-1-IG	Mouse Mono	ELISA, IHC, WB, FC
ID1	18475-1-AP	Rabbit Poly	ELISA, WB
IDH1	 12332-1-AP	Rabbit Poly	ELISA, IP, IF, WB, IHC, FC
IDH1	23309-1-AP	Rabbit Poly	ELISA, WB, IHC
IFT140	 17460-1-AP	Rabbit Poly	ELISA, IF, WB
IFT20	 13615-1-AP	Rabbit Poly	ELISA, IF, WB, IP, IHC
IFT27	15017-1-AP	Rabbit Poly	ELISA, WB, IF, IHC
IFT52	17534-1-AP	Rabbit Poly	ELISA, IF, WB, IP
IFT57	 11083-1-AP	Rabbit Poly	ELISA, WB, IHC, IP
IFT81	11744-1-AP	Rabbit Poly	ELISA, WB, IHC, IP, IF
IFT81	10604-2-AP	Rabbit Poly	ELISA, IHC, WB
IFT88	 13967-1-AP	Rabbit Poly	ELISA, WB, IF, IP, IHC
IGF2BP3	 14642-1-AP	Rabbit Poly	ELISA, WB, IHC, IF, IP
IGF2R-Specific	20253-1-AP	Rabbit Poly	ELISA, WB, IHC
IGFBP2	11065-3-AP	Rabbit Poly	ELISA, WB, IHC
IGFBP2	15699-1-AP	Rabbit Poly	ELISA, WB, IHC, IF
IGFBP3	10189-2-AP	Rabbit Poly	ELISA, WB, IHC, IF
IHH	13388-1-AP	Rabbit Poly	ELISA, WB, IHC
IKBKB	20979-1-AP	Rabbit Poly	ELISA, WB, IHC
IL13RA2	11059-1-AP	Rabbit Poly	ELISA, WB, IHC
IL3RA	13655-1-AP	Rabbit Poly	ELISA, WB
ILK	12955-1-AP	Rabbit Poly	ELISA, IHC, WB, IP
ILK	24926-1-AP	Rabbit Poly	ELISA, WB
IMP3	12750-1-AP	Rabbit Poly	ELISA, WB
ING1-specific	16185-1-AP	Rabbit Poly	ELISA, WB
ING2	 11560-1-AP	Rabbit Poly	ELISA, WB, IHC, IP
ING3	 10905-1-AP	Rabbit Poly	ELISA, IHC, WB
ING3-specific	16187-1-AP	Rabbit Poly	ELISA, WB
ING4	 10617-1-AP	Rabbit Poly	ELISA, WB, IP
ING4-specific	16188-1-AP	Rabbit Poly	ELISA, WB, IHC, IF, IP
ING5	 10665-1-AP	Rabbit Poly	ELISA, WB, IHC, IP
Inhibin beta A	10651-1-AP	Rabbit Poly	ELISA, WB, IHC, IF
Inhibin beta A	60015-1-IG	Mouse Mono	ELISA

Antibody Name	Cat No.	Type	Applications
Inhibin beta A	22689-1-AP	Rabbit Poly	ELISA, WB, IHC
Inhibin beta A-Specific	17524-1-AP	Rabbit Poly	ELISA, WB
Inhibin beta B	17577-1-AP	Rabbit Poly	ELISA, IHC
Insulin	15848-1-AP	Rabbit Poly	ELISA, WB, IHC
Insulin	66198-1-IG	Mouse Mono	ELISA, IHC
Integrin alpha-5	10569-1-AP	Rabbit Poly	ELISA, WB
Integrin beta-1	12594-1-AP	Rabbit Poly	ELISA, WB
Involucrin	55328-1-AP	Rabbit Poly	ELISA, WB, IHC
INVS	10585-1-AP	Rabbit Poly	ELISA, WB, IHC, IF
IRF2	12525-1-AP	Rabbit Poly	ELISA, WB, IHC
IRF3	 11312-1-AP	Rabbit Poly	ELISA, WB, IHC, IF, IP, FC
IRF4	11247-2-AP	Rabbit Poly	ELISA, IHC, WB, IP
IRF5	 10547-1-AP	Rabbit Poly	ELISA, WB, IHC, IF, FC
IRF5	60088-1-IG	Mouse Mono	ELISA, WB, IHC, IF
IRF7	22392-1-AP	Rabbit Poly	ELISA, WB, IHC
IRF8	18977-1-AP	Rabbit Poly	ELISA, WB, IHC
IRF8	24437-1-AP	Rabbit Poly	ELISA, WB
IRF9	14167-1-AP	Rabbit Poly	ELISA, WB, IHC, IF, IP
Islet 1	15661-1-AP	Rabbit Poly	ELISA, WB, IP, IHC
JNK	24164-1-AP	Rabbit Poly	ELISA, WB, IHC
JUN	24909-1-AP	Rabbit Poly	ELISA, WB, IF, IHC
JUNB	10486-1-AP	Rabbit Poly	ELISA, WB, IHC, IF, IP
Kallikrein 8	14232-1-AP	Rabbit Poly	ELISA, WB
KDM2A	24311-1-AP	Rabbit Poly	ELISA, WB
KEAP1	 10503-2-AP	Rabbit Poly	ELISA, IHC, IP, WB
KEAP1	 60027-1-IG	Mouse Mono	ELISA, IHC, WB
keratin 6A-specific	16853-1-AP	Rabbit Poly	ELISA, WB
KIF3A	13930-1-AP	Rabbit Poly	ELISA, WB, IHC, IP
KIFAP3	60266-1-IG	Mouse Mono	ELISA, WB, IHC
KLK3/PSA	10679-1-AP	Rabbit Poly	ELISA, IHC, WB
KPNA2	10819-1-AP	Rabbit Poly	ELISA, WB, IHC
KRAS	 12063-1-AP	Rabbit Poly	ELISA, WB, IP, FC, IHC
KRAS	60309-1-IG	Mouse Mono	ELISA, WB, IHC, FC
KRAS-2A	16156-1-AP	Rabbit Poly	ELISA, WB, IHC, FC
KRAS-2B	16155-1-AP	Rabbit Poly	ELISA, WB, IF, IHC, FC
KRT6A	 10590-1-AP	Rabbit Poly	ELISA, WB, IHC, FC, IF

**KRT6B**  
 → MMP1

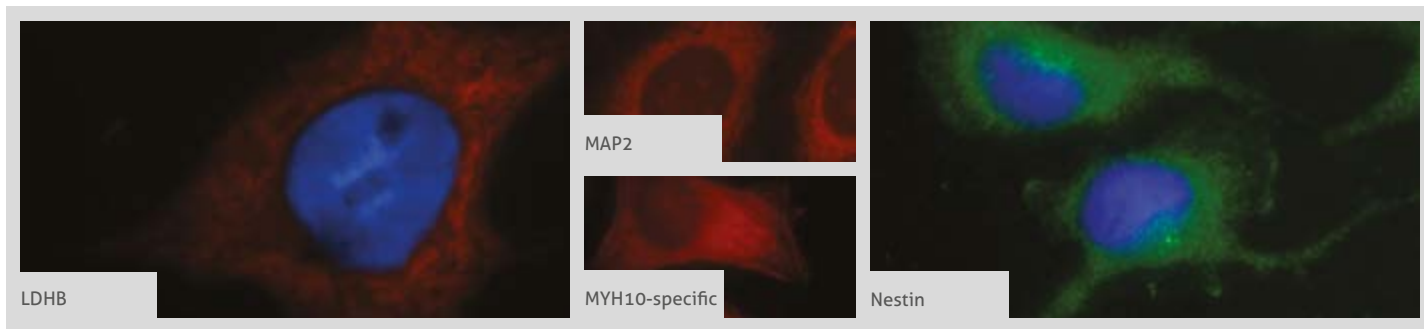
Antibody Name	Cat No.	Type	Applications
KRT6B	17391-1-AP	Rabbit Poly	ELISA, WB, IHC
Lactoferrin	10933-1-AP	Rabbit Poly	ELISA, IHC, WB
Langerin	11841-1-AP	Rabbit Poly	ELISA, WB
LBP	11836-1-AP	Rabbit Poly	ELISA, WB, IHC, IF, FC, IP
LBP	23559-1-AP	Rabbit Poly	ELISA, WB
LBP	66181-1-IG	Mouse Mono	ELISA, WB, IHC
LCK	12477-1-AP	Rabbit Poly	ELISA, WB, IHC
LCK	60162-1-IG	Mouse Mono	ELISA, WB
LDHB	14824-1-AP	Rabbit Poly	ELISA, WB, IHC, IF, FC, IP
LDHB-Specific	19988-1-AP	Rabbit Poly	ELISA, WB, IF
LGALS3BP	10281-1-AP	Rabbit Poly	ELISA, WB, IP
LGALS3BP	23307-1-AP	Rabbit Poly	ELISA, WB, IHC
LGALS3BP	60066-1-IG	Mouse Mono	ELISA, WB, IHC, IP
LIN9	17882-1-AP	Rabbit Poly	ELISA, WB
liver Arginase	16001-1-AP	Rabbit Poly	ELISA, IHC, IP, IF, FC, WB
liver Arginase	66129-1-IG	Mouse Mono	ELISA, WB, IHC
LOX	17958-1-AP	Rabbit Poly	ELISA, WB, IHC, IP
LPP	25045-1-AP	Rabbit Poly	ELISA, WB, IHC, IF, FC
LYN	18135-1-AP	Rabbit Poly	ELISA, WB, IHC, FC
LYN	60211-1-IG	Mouse Mono	ELISA, WB, IHC
Lysozyme	15013-1-AP	Rabbit Poly	ELISA, WB
MAF	55013-1-AP	Rabbit Poly	ELISA, IHC, WB
MAGEA1	12233-1-AP	Rabbit Poly	ELISA, WB, IHC
MAGEA1	55105-1-AP	Rabbit Poly	ELISA, WB
MAGEA10	15295-1-AP	Rabbit Poly	ELISA, WB
MAGEA11	15474-1-AP	Rabbit Poly	ELISA, WB, IF
MAGEA4	55109-1-AP	Rabbit Poly	ELISA, WB, IHC
MAGEA6	14602-1-AP	Rabbit Poly	ELISA, WB, IHC, IF
MAGEA8	15045-1-AP	Rabbit Poly	ELISA, WB
MAGEB1	12400-1-AP	Rabbit Poly	ELISA, WB, IF
MAGEB18	17494-1-AP	Rabbit Poly	ELISA, WB, IHC
MAGEB4	12786-2-AP	Rabbit Poly	ELISA, WB, IF
MAGEC2	10280-1-AP	Rabbit Poly	ELISA, IHC
MAGEC3	21491-1-AP	Rabbit Poly	ELISA, WB, IHC
MAGED1	11539-1-AP	Rabbit Poly	ELISA, WB, IHC
MAGED1	22053-1-AP	Rabbit Poly	ELISA, WB, IHC

Antibody Name	Cat No.	Type	Applications
MAGED2	15252-1-AP	Rabbit Poly	ELISA, WB, IF, IP
MAGED4	16809-1-AP	Rabbit Poly	ELISA, WB
MAGEF1	24105-1-AP	Rabbit Poly	ELISA, WB, IHC
MALT1	11660-1-AP	Rabbit Poly	ELISA, IHC, IF, WB, FC
Mammaglobin A	23501-1-AP	Rabbit Poly	ELISA, WB, IHC
Mammaglobin A	25645-1-AP	Rabbit Poly	ELISA, IHC
MAP2	17490-1-AP	Rabbit Poly	ELISA, WB, IF, IP, IHC
MAS1L-Specific	20080-1-AP	Rabbit Poly	ELISA, WB, IF
Maspin	11722-1-AP	Rabbit Poly	ELISA, WB, IHC
MCL1	16225-1-AP	Rabbit Poly	ELISA, IHC, WB, IP
MCL1	66026-1-IG	Mouse Mono	ELISA, WB, IF, IHC
MCL1L-specific	15825-1-AP	Rabbit Poly	ELISA, IHC
MCM2	10513-1-AP	Rabbit Poly	ELISA, WB, IHC, IP
MCM7	11225-1-AP	Rabbit Poly	ELISA, IHC, WB
MDM2	19058-1-AP	Rabbit Poly	ELISA, WB
MDMX	17914-1-AP	Rabbit Poly	ELISA, WB
MED19	13418-1-AP	Rabbit Poly	ELISA, WB, IHC
MED28	16262-1-AP	Rabbit Poly	ELISA, IHC
MEIS2	11550-1-AP	Rabbit Poly	ELISA, IHC, WB
MEIS3	12775-1-AP	Rabbit Poly	ELISA, WB
MGEA5	14711-1-AP	Rabbit Poly	ELISA, WB, IHC, IF, IP
MGEA5	66033-1-IG	Mouse Mono	ELISA, WB, IF, IHC
MGMT	17195-1-AP	Rabbit Poly	ELISA, WB, IHC
Midkine	11009-1-AP	Rabbit Poly	ELISA, IF, IHC
MITF	13092-1-AP	Rabbit Poly	ELISA, WB, FC
MKS1	16206-1-AP	Rabbit Poly	ELISA, WB, IHC, IF, IP
MKS3	13975-1-AP	Rabbit Poly	ELISA, IF, IHC
MLF1	13100-1-AP	Rabbit Poly	ELISA, WB, IHC
MLF2	11835-1-AP	Rabbit Poly	ELISA, WB, IHC
MLH1	11697-1-AP	Rabbit Poly	ELISA, WB, IHC, IP
MLL5	14540-1-AP	Rabbit Poly	ELISA, WB
MME,CD10	18008-1-AP	Rabbit Poly	ELISA, WB, IHC, IP, FC
MME,CD10	10302-1-AP	Rabbit Poly	ELISA, WB, IHC, FC
MME,CD10	23898-1-AP	Rabbit Poly	ELISA, WB, IF, FC
MME,CD10	60034-3-IG	Mouse Mono	ELISA, IHC, WB
MMP1	10371-2-AP	Rabbit Poly	ELISA, WB, IF, IP, FC, IHC



MMP2  
→ NFKB1

More validation images available on our website.



Antibody Name	Cat No.	Type	Applications
MMP2	17 10373-2-AP	Rabbit Poly	ELISA, WB, IHC
MMP7	6 10374-2-AP	Rabbit Poly	ELISA, WB, IHC
MMP8	17874-1-AP	Rabbit Poly	ELISA, WB, IHC
MPO	22225-1-AP	Rabbit Poly	ELISA, IHC, WB
MPO	66177-1-IG	Mouse Mono	ELISA, IHC, WB
MSH2	15520-1-AP	Rabbit Poly	ELISA, WB, IHC, IF, FC, IP
MSH2	60161-1-IG	Mouse Mono	ELISA, WB
MSH3	22393-1-AP	Rabbit Poly	ELISA, WB
MSH6	18120-1-AP	Rabbit Poly	ELISA, WB, IHC, IF
MSH6	66172-1-IG	Mouse Mono	ELISA, WB, IHC, IP
MSRB2	17629-1-AP	Rabbit Poly	ELISA, WB, IHC
MUC1	19976-1-AP	Rabbit Poly	ELISA, WB, FC, IHC
MUC1	23614-1-AP	Rabbit Poly	ELISA, FC, IHC
MUC16,CA125	20077-1-AP	Rabbit Poly	ELISA, WB
MUC16,CA125	60261-1-IG	Mouse Mono	ELISA, IHC
MUM1	12682-1-AP	Rabbit Poly	ELISA, WB, IHC
MYCN	10159-2-AP	Rabbit Poly	ELISA, WB
Myelin basic protein	10458-1-AP	Rabbit Poly	ELISA, WB, IHC
MYEOV	11151-1-AP	Rabbit Poly	ELISA, WB, IHC
MYH10	21403-1-AP	Rabbit Poly	ELISA, WB, IF
MYH10-specific	19673-1-AP	Rabbit Poly	ELISA, WB, IF, FC
MYH11	18569-1-AP	Rabbit Poly	ELISA, WB
MYH11	21404-1-AP	Rabbit Poly	ELISA, WB, IHC
MYH11	60222-1-IG	Mouse Mono	ELISA, WB
MYH11	60222-2-IG	Mouse Mono	ELISA, WB
MYH14	20716-1-AP	Rabbit Poly	ELISA, WB, IF
MYH2-specific	55069-1-AP	Rabbit Poly	ELISA, IHC, WB
MYH4-Specific	20140-1-AP	Rabbit Poly	ELISA, WB, IHC

Antibody Name	Cat No.	Type	Applications
MYH9	11128-1-AP	Rabbit Poly	ELISA, IHC, IF, WB, IP
MYH9	60233-1-IG	Mouse Mono	ELISA, WB
MYL1	15814-1-AP	Rabbit Poly	ELISA, WB
MYL3	10913-1-AP	Rabbit Poly	ELISA, IHC, WB
MYL4	13229-1-AP	Rabbit Poly	ELISA, WB
MYL5	14249-1-AP	Rabbit Poly	ELISA, WB
MYL7	17283-1-AP	Rabbit Poly	ELISA, WB, IHC
MYL9	15354-1-AP	Rabbit Poly	ELISA, WB, IHC, IF
Myocilin	14238-1-AP	Rabbit Poly	ELISA, WB
MYOD1	18943-1-AP	Rabbit Poly	ELISA, WB, IHC
Myoglobin	16048-1-AP	Rabbit Poly	ELISA, WB, IHC
Myosin Light Chain 2	23 10906-1-AP	Rabbit Poly	ELISA, WB, IHC, IP
Myosin Light Chain 2	60229-1-IG	Mouse Mono	ELISA, WB, IHC
Napsin A	60259-1-IG	Mouse Mono	ELISA, IHC, IF
NCAM1/CD56	14255-1-AP	Rabbit Poly	ELISA, WB, IHC, FC
NCAM1/CD56	60238-1-IG	Mouse Mono	ELISA, WB, IHC
NDE1	5 10233-1-AP	Rabbit Poly	ELISA, WB, IHC, IF, IP
NEDD4L	6 13690-1-AP	Rabbit Poly	ELISA, WB, IHC
Neogenin-specific	20246-1-AP	Rabbit Poly	ELISA, WB
Nestin	19483-1-AP	Rabbit Poly	ELISA, WB, IHC, IF
NeuN	23060-1-AP	Rabbit Poly	ELISA, WB, IHC
neuromedin B	10888-1-AP	Rabbit Poly	ELISA, IHC, WB
Neuropilin 1	60067-1-IG	Mouse Mono	ELISA, WB, IHC, IF
NF-H	18934-1-AP	Rabbit Poly	ELISA, WB, IHC
NF-H	21471-1-AP	Rabbit Poly	ELISA, WB, IHC
NFKB1	5 14220-1-AP	Rabbit Poly	ELISA, WB, IF, IP
NFKB1	23576-1-AP	Rabbit Poly	ELISA, WB, IHC
NFKB1	15506-1-AP	Rabbit Poly	ELISA, WB

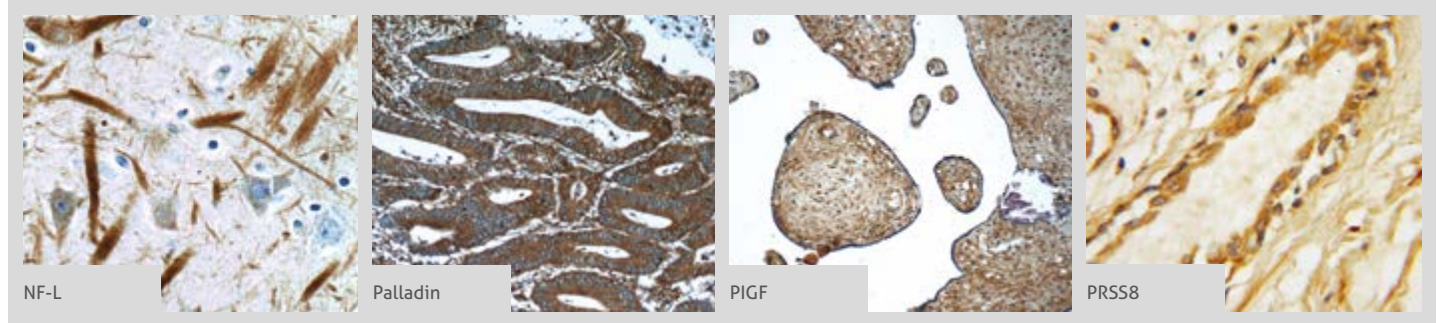
00 This number shows the amount of times our antibody has been cited in a publication.

**NFKB2**  
 → PHF14

Antibody Name	Cat No.	Type	Applications
NFKB2	10409-2-AP	Rabbit Poly	ELISA, IHC, WB, IF
NFKB2	51085-1-AP	Rabbit Poly	ELISA, WB
NFKB2	15503-1-AP	Rabbit Poly	ELISA, IHC, WB
NF-L	12998-1-AP	Rabbit Poly	ELISA, WB, IF, IP, IHC
NF-L	60189-1-IG	Mouse Mono	ELISA, WB
NF-M-Specific	20664-1-AP	Rabbit Poly	ELISA, IF, WB, IHC
NME1	11086-2-AP	Rabbit Poly	ELISA, WB, IHC, IF, IP
NNMT	15123-1-AP	Rabbit Poly	ELISA, WB
NPHP3	22026-1-AP	Rabbit Poly	ELISA, WB, IF, IHC, IP
NPHP4	13812-1-AP	Rabbit Poly	ELISA, IHC, WB, IF
NR5A1	18658-1-AP	Rabbit Poly	ELISA, WB, IHC
NRAS	10724-1-AP	Rabbit Poly	ELISA, WB, IF, IHC, FC
NRF2, NFE2L2	16396-1-AP	Rabbit Poly	ELISA, IP, WB, IHC, FC
NSE	10149-1-AP	Rabbit Poly	ELISA, WB, IHC, IP
NSE	55235-1-AP	Rabbit Poly	ELISA, WB
NSE	66150-1-IG	Mouse Mono	ELISA, WB
NUP85	19370-1-AP	Rabbit Poly	ELISA, WB, IHC, IF
OCT2	10867-2-AP	Rabbit Poly	ELISA, WB, IHC
OCT2-Specific	18996-1-AP	Rabbit Poly	ELISA, WB, IHC
OCT4	11263-1-AP	Rabbit Poly	ELISA, IHC, IF, WB
OCT4	60242-1-IG	Mouse Mono	ELISA, WB, IHC
OGFR	11177-1-AP	Rabbit Poly	ELISA, WB, IHC, IP, IF
OPTN	10837-1-AP	Rabbit Poly	ELISA, WB, IHC, IF, IP
OPTN	60293-1-IG	Mouse Mono	ELISA, WB
Osteocalcin	23418-1-AP	Rabbit Poly	ELISA, IHC
Osteopontin	22952-1-AP	Rabbit Poly	ELISA, IHC, WB
Osteopontin	25715-1-AP	Rabbit Poly	ELISA, WB
OVCA1	20112-1-AP	Rabbit Poly	ELISA, WB, IHC, IF
p107	13354-1-AP	Rabbit Poly	ELISA, WB
p120 Catenin	12180-1-AP	Rabbit Poly	ELISA, WB, IF
p130Cas	16815-1-AP	Rabbit Poly	ELISA, WB, IHC, IF
P16-INK4A	10883-1-AP	Rabbit Poly	ELISA, WB, IF, IP, IHC, FC
p19 INK4d	10272-2-AP	Rabbit Poly	ELISA, WB, IHC, IF
P21	60214-1-IG	Mouse Mono	ELISA, WB, IF
P21;CDKN1A	10355-1-AP	Rabbit Poly	ELISA, IHC, IF, WB
P27; KIP1	25614-1-AP	Rabbit Poly	ELISA, WB

Antibody Name	Cat No.	Type	Applications
p504S,AMACR	60240-1-IG	Mouse Mono	ELISA, WB
P53	10442-1-AP	Rabbit Poly	ELISA, IHC, IP, WB
P53	60283-1-IG	Mouse Mono	ELISA, WB
p63	12143-1-AP	Rabbit Poly	ELISA, WB
p75NTR	55014-1-AP	Rabbit Poly	ELISA, WB, IHC, IP, FC, IF
PAI-1	13801-1-AP	Rabbit Poly	ELISA, IHC, WB, IP
Palladin	10853-1-AP	Rabbit Poly	ELISA, WB, IP, IHC, FC, IF
Palladin-specific	16179-1-AP	Rabbit Poly	ELISA, WB, IP
Pan-PAX	21383-1-AP	Rabbit Poly	ELISA, WB, IHC, IP
PARP1	22999-1-AP	Rabbit Poly	ELISA, WB
PAX3	21386-1-AP	Rabbit Poly	ELISA, WB
PAX3	51036-2-AP	Rabbit Poly	ELISA, WB
PAX4	66064-1-IG	Mouse Mono	ELISA, WB
PAX6	12323-1-AP	Rabbit Poly	ELISA, IHC, WB
PAX7	20570-1-AP	Rabbit Poly	ELISA, WB
PAX7	60236-1-IG	Mouse Mono	ELISA, IHC
PAX8	10336-1-AP	Rabbit Poly	ELISA, WB, IHC, IP, FC
PAX8	60145-4-IG	Mouse Mono	ELISA, WB, IHC
PAX8-Specific	66073-1-IG	Mouse Mono	ELISA, WB, IHC
PBX1	18204-1-AP	Rabbit Poly	ELISA, WB
PBX3	12571-1-AP	Rabbit Poly	ELISA, WB, IHC
PBX4	22323-1-AP	Rabbit Poly	ELISA, WB
P-cadherin	13773-1-AP	Rabbit Poly	ELISA, WB, IHC, IF
PCNA	10205-2-AP	Rabbit Poly	ELISA, IF, IP, WB, IHC, FC
PCNA	60097-1-IG	Mouse Mono	ELISA, WB, IHC, FC, IP
PCNA	24036-1-AP	Rabbit Poly	ELISA, WB, IHC
PD-1/CD279	18106-1-AP	Rabbit Poly	ELISA, WB, IHC, FC
PD-ECGF	12383-1-AP	Rabbit Poly	ELISA, WB, IHC
PDGFRB	13449-1-AP	Rabbit Poly	ELISA, WB
Pentraxin 3	13797-1-AP	Rabbit Poly	ELISA, WB
Perforin	14580-1-AP	Rabbit Poly	ELISA, WB
Peripherin	17399-1-AP	Rabbit Poly	ELISA, WB, IHC
PGD	14718-1-AP	Rabbit Poly	ELISA, WB, IHC, IF
PGLYRP3	18082-1-AP	Rabbit Poly	ELISA, WB
PGRMC1	12990-1-AP	Rabbit Poly	ELISA, WB, IHC, IP
PHF14	24787-1-AP	Rabbit Poly	ELISA, WB, IHC

More validation images available on our website.



Antibody Name	Cat No.	Type	Applications
PHF17	15032-1-AP	Rabbit Poly	ELISA, WB
phospho (403/404)-TDP43	66079-1-IG	Mouse Mono	ELISA, WB
phospho (409/410)-TDP43	22309-1-AP	Rabbit Poly	ELISA, WB
phospho CHC1(Ser12)	14444-1-AP	Rabbit Poly	ELISA, WB, IHC
PIGF	10642-1-AP	Rabbit Poly	ELISA, WB, IHC, IP
PIN1	10495-1-AP	Rabbit Poly	ELISA, WB, IHC, IP
PINX1	12368-1-AP	Rabbit Poly	ELISA, WB, IHC
PKM	10078-2-AP	Rabbit Poly	ELISA, IHC, WB
PKM1-specific	15821-1-AP	Rabbit Poly	ELISA, WB, IHC, IP, IF
PKM2-specific	15822-1-AP	Rabbit Poly	ELISA, WB, IHC, IF, IP
PKM2-specific	60268-1-IG	Mouse Mono	ELISA, IHC, IF, WB, FC
PLAA	12529-1-AP	Rabbit Poly	ELISA, WB, IP
PLAA	60244-1-IG	Mouse Mono	ELISA, WB
Placental lactogen	10178-1-AP	Rabbit Poly	ELISA, WB
Placental lactogen	16326-1-AP	Rabbit Poly	ELISA, WB, IHC
Placental lactogen	55236-1-AP	Rabbit Poly	ELISA, WB, IHC
PLAP	18507-1-AP	Rabbit Poly	ELISA, IHC, WB
PLAP	60294-1-IG	Mouse Mono	ELISA, WB
PLEK	12506-1-AP	Rabbit Poly	ELISA, WB, IHC, IP
PLUNC	10413-1-AP	Rabbit Poly	ELISA, WB
PLVAP	14452-1-AP	Rabbit Poly	ELISA, WB
PLXDC2	12285-1-AP	Rabbit Poly	ELISA, WB
PMS1	10859-1-AP	Rabbit Poly	ELISA, IHC
PMS2	18164-1-AP	Rabbit Poly	ELISA, WB
PMS2	66075-1-IG	Mouse Mono	ELISA, WB, IHC
PNMA2	16445-1-AP	Rabbit Poly	ELISA, WB
PNMAL1	16965-1-AP	Rabbit Poly	ELISA, WB, IF
Podoplanin	11629-1-AP	Rabbit Poly	ELISA, IHC, WB

Antibody Name	Cat No.	Type	Applications
Podoplanin	22099-1-AP	Rabbit Poly	ELISA, WB
POU2AF1	13605-1-AP	Rabbit Poly	ELISA, WB
PRCC	12019-1-AP	Rabbit Poly	ELISA, WB
PRDX6	13585-1-AP	Rabbit Poly	ELISA, WB, IF, IHC, IP
Prealbumin/transthyretin	11891-1-AP	Rabbit Poly	ELISA, WB, IHC
Prealbumin/transthyretin	66108-1-IG	Mouse Mono	ELISA, WB, IHC
Pre-IL18	10663-1-AP	Rabbit Poly	ELISA, WB, IP, IHC, IF
Pre-IL18	60070-1-IG	Mouse Mono	ELISA, IF, WB
Presenilin-1-Specific	16163-1-AP	Rabbit Poly	ELISA, WB
ProGRP	14646-1-AP	Rabbit Poly	ELISA, WB, IHC
Prothymosin alpha	10480-1-AP	Rabbit Poly	ELISA, IHC
PROX1	11067-2-AP	Rabbit Poly	ELISA, WB, IHC, IF, FC
PROX1	19554-1-AP	Rabbit Poly	ELISA, WB
PRSS8	15527-1-AP	Rabbit Poly	ELISA, WB, IHC
PSCA	17171-1-AP	Rabbit Poly	ELISA, WB
PSMA/GCPII	13163-1-AP	Rabbit Poly	ELISA, WB, IHC
PSMD4	66179-1-IG	Mouse Mono	ELISA, WB
PSME3	14907-1-AP	Rabbit Poly	ELISA, WB, IHC, IF, IP
PTEN	22034-1-AP	Rabbit Poly	ELISA, IHC
PTEN	60300-1-IG	Mouse Mono	ELISA, IHC, WB, IF
PTGDS	10754-2-AP	Rabbit Poly	ELISA, WB, IHC
PTHLH	10817-1-AP	Rabbit Poly	ELISA, WB
PTH-Specific	19001-1-AP	Rabbit Poly	ELISA, WB
PTPIP51	20641-1-AP	Rabbit Poly	ELISA, WB, IHC, IF
PVRL3, Nectin 3	11213-1-AP	Rabbit Poly	ELISA, WB, IHC
RAB11-Specific	20229-1-AP	Rabbit Poly	ELISA, WB, IF
RAB8A	55296-1-AP	Rabbit Poly	ELISA, WB, IF, IP
RABEPK	10213-2-AP	Rabbit Poly	ELISA, WB

**RABEPK**  
 → SMAD4

Antibody Name	Cat No.	Type	Applications
RABEPK	15105-1-AP	Rabbit Poly	ELISA, WB, IHC
RAD51	14961-1-AP	Rabbit Poly	ELISA, WB, IP
RAF1	12388-1-AP	Rabbit Poly	ELISA, IHC
RARA	10331-1-AP	Rabbit Poly	ELISA
RARB	14013-1-AP	Rabbit Poly	ELISA, IHC, IF
RARG	11424-1-AP	Rabbit Poly	ELISA, WB
Rb	17218-1-AP	Rabbit Poly	ELISA, WB
RB1	<b>13</b> 10048-2-IG	Rabbit Poly	ELISA, WB, IHC, IP
RBL2	12685-1-AP	Rabbit Poly	ELISA
RCAS1	12255-1-AP	Rabbit Poly	ELISA, WB, IHC, IP, IF
RCC1	22142-1-AP	Rabbit Poly	ELISA, WB, IHC, IP
RCC1	22335-1-AP	Rabbit Poly	ELISA, WB, IHC, IP
REG4	12268-1-AP	Rabbit Poly	ELISA, WB
RFX3	14784-1-AP	Rabbit Poly	ELISA, WB
RHOT2	11237-1-AP	Rabbit Poly	ELISA, IHC, WB, IP
RKIP	10575-1-AP	Rabbit Poly	ELISA, IHC, WB
ROCK1	21850-1-AP	Rabbit Poly	ELISA, WB, IHC
ROCK1-Specific	20247-1-AP	Rabbit Poly	ELISA, WB, IHC
ROCK2	21645-1-AP	Rabbit Poly	ELISA, WB, IHC, IF, IP
ROCK2-Specific	20248-1-AP	Rabbit Poly	ELISA, WB, IHC, IF
ROPN1L	12565-1-AP	Rabbit Poly	ELISA, WB, IHC
RP2	14151-1-AP	Rabbit Poly	ELISA, WB, IHC, FC
RPGR	16891-1-AP	Rabbit Poly	ELISA, WB, IF, IHC
RPGRIP1L	55160-1-AP	Rabbit Poly	ELISA, WB, IHC, IP
RPL19	14701-1-AP	Rabbit Poly	ELISA, WB, IHC
RPS27	15355-1-AP	Rabbit Poly	ELISA, WB, IHC, IF
RRAS	11647-1-AP	Rabbit Poly	ELISA, WB, IHC
RRM1	<b>29</b> 10526-1-AP	Rabbit Poly	ELISA, IP, WB, IF, FC, IHC
RRM1	60073-1-IG	Mouse Mono	ELISA, FC, IP
RRM1	60073-2-IG	Mouse Mono	ELISA, WB, IHC, IF, IP
RRM1-Specific	19686-1-AP	Rabbit Poly	ELISA, WB, IF
S100A1	16027-1-AP	Rabbit Poly	ELISA, WB
S100A10	11250-1-AP	Rabbit Poly	ELISA, WB, IHC, IF, FC
S100A11	<b>19</b> 10237-1-AP	Rabbit Poly	ELISA, IHC, IP, FC, WB
S100A11	60024-1-IG	Mouse Mono	ELISA, WB, IHC
S100A12	16630-1-AP	Rabbit Poly	ELISA, IHC

Antibody Name	Cat No.	Type	Applications
S100A14	<b>8</b> 10489-1-AP	Rabbit Poly	ELISA, IHC
S100A3	12343-1-AP	Rabbit Poly	ELISA, WB
S100A4	16105-1-AP	Rabbit Poly	ELISA, WB, IHC
S100A5	17924-1-AP	Rabbit Poly	ELISA, WB, IHC
S100A6	<b>6</b> 10245-1-AP	Rabbit Poly	ELISA, WB, IHC, IF, FC, IP
S100A6	66098-1-IG	Mouse Mono	ELISA, WB, IF, IHC
S100A8	15792-1-AP	Rabbit Poly	ELISA, WB, IHC
S100A9	14226-1-AP	Rabbit Poly	ELISA, WB, IHC
S100B	15146-1-AP	Rabbit Poly	ELISA, WB, IHC, IF
S100P	11803-1-AP	Rabbit Poly	ELISA, IHC, WB, IF, FC
SALL4	24500-1-AP	Rabbit Poly	ELISA, WB, IHC, IP
SCNN1A	10924-2-AP	Rabbit Poly	ELISA, WB, IHC
SCNN1G	13943-1-AP	Rabbit Poly	ELISA, WB, IHC
SDCCAG8	<b>6</b> 13471-1-AP	Rabbit Poly	ELISA, WB, IF
Securin / PTTG1	18040-1-AP	Rabbit Poly	ELISA, IF
Semenogelin-1	15916-1-AP	Rabbit Poly	ELISA, IHC, WB
SEPT2	<b>5</b> 11397-1-AP	Rabbit Poly	ELISA, IHC, IP, IF, WB, FC
SEPT2	60075-1-IG	Mouse Mono	ELISA, WB, IHC, IF
SERCA2	13985-1-AP	Rabbit Poly	ELISA, WB
SERPINB2	16035-1-AP	Rabbit Poly	ELISA, WB, IHC
Sestrin 2	<b>33</b> 10795-1-AP	Rabbit Poly	ELISA, WB, IHC, IF, IP
Sestrin 2	21346-1-AP	Rabbit Poly	ELISA, WB, IF
SFTPA1 / Surfactant Protein A	11850-1-AP	Rabbit Poly	ELISA, IHC
SFTPB	13664-1-AP	Rabbit Poly	ELISA, WB, IHC, IP
SFTPC	10774-1-AP	Rabbit Poly	ELISA, WB, IHC
SH3BP4	17691-1-AP	Rabbit Poly	ELISA, WB, IF
SHC	10054-1-AP	Rabbit Poly	ELISA, WB, IHC, IF
SHC	12496-1-AP	Rabbit Poly	ELISA, WB, IHC, IF
SHH	20697-1-AP	Rabbit Poly	ELISA, WB, IF, IHC, IP
SKIL	19218-1-AP	Rabbit Poly	ELISA, WB
SKP2	15010-1-AP	Rabbit Poly	ELISA, IHC, WB, IP, IF
SMAD1	10429-1-AP	Rabbit Poly	ELISA, WB, IF, IP
SMAD2	<b>6</b> 12570-1-AP	Rabbit Poly	ELISA, WB, IHC, IF, IP
SMAD3	25494-1-AP	Rabbit Poly	ELISA, WB, IHC, IF
SMAD4	10231-1-AP	Rabbit Poly	ELISA, WB, IHC
SMAD4	51069-2-AP	Rabbit Poly	ELISA, WB, IHC, IF

Antibody Name	Cat No.	Type	Applications
SMAD4	51144-1-AP	Rabbit Poly	ELISA, WB, IHC
SMAD5	12167-1-AP	Rabbit Poly	ELISA, IF, WB, FC
SMAD9	16397-1-AP	Rabbit Poly	ELISA, WB
SMARCB1	20654-1-AP	Rabbit Poly	ELISA, WB, IP
SMN	11708-1-AP	Rabbit Poly	ELISA, IHC, IF, IP, WB
SMN	20451-1-AP	Rabbit Poly	ELISA, WB, IHC, IF, IP
SMN (Human,Mouse,Rat)	60154-2-IG	Mouse Mono	ELISA, WB
SMN (human-Specific)	60154-1-IG	Mouse Mono	ELISA, WB, IHC, IP
smooth muscle actin specific	55135-1-AP	Rabbit Poly	ELISA, IHC, WB
Somatostatin-Specific	17512-1-AP	Rabbit Poly	ELISA, WB, IHC
Sortilin	12369-1-AP	Rabbit Poly	ELISA, WB, IHC, IP
SPA17	13367-1-AP	Rabbit Poly	ELISA, WB, IHC, IP
SPARC	5 15274-1-AP	Rabbit Poly	ELISA, WB, IHC
SRC	11097-1-AP	Rabbit Poly	ELISA, IHC, IP, FC, IF, WB
SSX4	15876-1-AP	Rabbit Poly	ELISA, IHC, WB
SSX5	12401-1-AP	Rabbit Poly	ELISA, WB
ST5	12893-1-AP	Rabbit Poly	ELISA, WB
ST6GAL1	14355-1-AP	Rabbit Poly	ELISA, WB
ST7	11945-1-AP	Rabbit Poly	ELISA, WB, IHC, IP
ST7L	17567-1-AP	Rabbit Poly	ELISA, WB, IP
STAT3	10253-2-AP	Rabbit Poly	ELISA, WB, IHC, IF, FC, IP
STAT3	60199-1-IG	Mouse Mono	ELISA, WB, IHC, IF
STAT6	51073-1-AP	Rabbit Poly	ELISA, WB, IHC
STAT6	10257-1-AP	Rabbit Poly	ELISA, WB, IHC
STK36	12559-1-AP	Rabbit Poly	ELISA, WB, IHC
STOML2	19 10348-1-AP	Rabbit Poly	ELISA, IHC, IF, IP, WB
STOML2	60052-1-IG	Mouse Mono	ELISA, WB, IHC, IP
SUFU	10836-1-AP	Rabbit Poly	ELISA, IHC, IF
Surfactant protein D	11839-1-AP	Rabbit Poly	ELISA, IHC, IP
SURVIVIN	5 10508-1-AP	Rabbit Poly	ELISA, WB, IHC, IF, IP
SURVIVIN-specific	19119-1-AP	Rabbit Poly	ELISA, IHC, IF
Synaptophysin	17785-1-AP	Rabbit Poly	ELISA, WB, IHC, IP, IF
Synaptophysin	60191-1-IG	Mouse Mono	ELISA, WB, IF
SYNPO2L	21480-1-AP	Rabbit Poly	ELISA, WB, IF
TACC1	13862-1-AP	Rabbit Poly	ELISA, WB
TACC2	11407-1-AP	Rabbit Poly	ELISA, WB, IHC, IF

Antibody Name	Cat No.	Type	Applications
TAF15	24235-1-AP	Rabbit Poly	ELISA, WB, IHC
TAL1	55317-1-AP	Rabbit Poly	ELISA, WB
TBC1D22A	18332-1-AP	Rabbit Poly	ELISA, WB, IHC
TBC1D23	17002-1-AP	Rabbit Poly	ELISA, WB, IHC, IP
TBC1D5	17078-1-AP	Rabbit Poly	ELISA, WB, IHC
TCTN3	16085-1-AP	Rabbit Poly	ELISA, IHC, IF, IP, WB
TDP-43	628 10782-2-AP	Rabbit Poly	ELISA, IF, WB, IHC, IP, FC
TDP-43	41 12892-1-AP	Rabbit Poly	ELISA, IHC, IF, IP, WB
TDP-43	32 60019-2-IG	Mouse Mono	ELISA, IF, IP, FC, WB, IHC
TDP-43	18280-1-AP	Rabbit Poly	ELISA, IHC, IP, WB
TEKT2	13518-1-AP	Rabbit Poly	ELISA, WB, IHC
TEM1	18160-1-AP	Rabbit Poly	ELISA, WB, IHC, FC
TEM1	18594-1-AP	Rabbit Poly	ELISA, WB, IHC, FC
TEM8	15091-1-AP	Rabbit Poly	ELISA, WB
TES	10258-1-AP	Rabbit Poly	ELISA, WB
TFAP2A,AP-2	13019-3-AP	Rabbit Poly	ELISA, WB
TFAP2B	13183-1-AP	Rabbit Poly	ELISA, WB, IP
TFAP2C	14572-1-AP	Rabbit Poly	ELISA, WB, IHC, FC
TFE3	14480-1-AP	Rabbit Poly	ELISA, WB
TGFBI / BIGH3	20 10188-1-AP	Rabbit Poly	ELISA, IP, IHC, WB
TGFBI / BIGH3	60007-1-IG	Mouse Mono	ELISA, IHC, WB, IP
THEM2	16782-1-AP	Rabbit Poly	ELISA, WB, IHC
Thrombomodulin	14318-1-AP	Rabbit Poly	ELISA, WB, IHC
Thrombospondin-1	18304-1-AP	Rabbit Poly	ELISA, WB, IF, IP
Thymidylate synthase	15047-1-AP	Rabbit Poly	ELISA, WB, IHC, IF, IP
Thyroglobulin	21714-1-AP	Rabbit Poly	ELISA, IHC
Thyroglobulin	60272-1-IG	Mouse Mono	ELISA, IHC
TIA1	12133-2-AP	Rabbit Poly	ELISA, WB, IP
TIMP1	6 10753-1-AP	Rabbit Poly	ELISA, IHC, IF
TK1	15691-1-AP	Rabbit Poly	ELISA, WB, IF, IHC
TLE1	11284-1-AP	Rabbit Poly	ELISA, IHC
TMEFF2	11928-1-AP	Rabbit Poly	ELISA, WB, IHC
TMEM16A/DOG1	12652-1-AP	Rabbit Poly	ELISA, IHC
TMS1	9 10500-1-AP	Rabbit Poly	ELISA, WB, IHC, IP
TNS3	20053-1-AP	Rabbit Poly	ELISA, WB
TP53	21891-1-AP	Rabbit Poly	ELISA, IHC, IP, WB

tPA  
→ β-ENaC

Antibody Name	Cat No.	Type	Applications
tPA	10147-1-AP	Rabbit Poly	ELISA, WB, IHC, IP
TRAF1	11543-1-AP	Rabbit Poly	ELISA, WB
Transferrin	66171-1-IG	Mouse Mono	ELISA, WB, IHC
Transferrin receptor/ CD71	10084-2-AP	Rabbit Poly	ELISA, WB, IHC, IP
transgelin/SM22	13 10493-1-AP	Rabbit Poly	ELISA, WB, IHC
transgelin/SM22	60213-1-IG	Mouse Mono	ELISA, WB, IHC
transgelin/SM22-specific	15502-1-AP	Rabbit Poly	ELISA, WB, IHC
Trefoil factor 1	13734-1-AP	Rabbit Poly	ELISA, WB, IHC, IF
TRIM27	12205-1-AP	Rabbit Poly	ELISA, WB, IHC, IP
TRIM32	10326-1-AP	Rabbit Poly	ELISA, WB, IHC, IF
TRPV6	13411-1-AP	Rabbit Poly	ELISA, IF, WB, IP
TSHR	14450-1-AP	Rabbit Poly	ELISA, WB
TSPAN10	14430-1-AP	Rabbit Poly	ELISA, IF, WB
TSSC4	14531-1-AP	Rabbit Poly	ELISA, IF, IHC, WB
TTF1	66034-1-IG	Mouse Mono	ELISA, WB, IHC
TXNDC3	13586-1-AP	Rabbit Poly	ELISA, WB
UCHL1/PGP9.5	14730-1-AP	Rabbit Poly	ELISA, WB
UHRF1	21402-1-AP	Rabbit Poly	ELISA, WB, IF
ULBP1	17715-1-AP	Rabbit Poly	ELISA, WB, IHC
ULBP2	13133-1-AP	Rabbit Poly	ELISA, WB
uPA	17968-1-AP	Rabbit Poly	ELISA, WB, IHC, IP
Uromodulin	11911-1-AP	Rabbit Poly	ELISA, WB, IHC, IP
VAV1	16364-1-AP	Rabbit Poly	ELISA, WB, IHC
VAV2	21924-1-AP	Rabbit Poly	ELISA, WB, IHC, IP
VCAM-1	11444-1-AP	Rabbit Poly	ELISA, IHC
VCP	10736-1-AP	Rabbit Poly	ELISA, WB, IP, IHC, IF
VCP	60316-1-IG	Mouse Mono	ELISA, WB, IHC
VEGF	17 19003-1-AP	Rabbit Poly	ELISA, IHC, IF, IP, WB
VHL	16538-1-AP	Rabbit Poly	ELISA, IF, IHC
Villin	66096-1-IG	Mouse Mono	ELISA, WB, IHC, IF, IP
Villin	16488-1-AP	Rabbit Poly	ELISA, WB, IHC, IF
Vimentin	22 10366-1-AP	Rabbit Poly	ELISA, IF, IHC, WB, FC
Vimentin	22031-1-AP	Rabbit Poly	ELISA, WB
VWF, VWFpp	11778-1-AP	Rabbit Poly	ELISA, WB, IHC
WDR19/IFT144	13647-1-AP	Rabbit Poly	ELISA, WB, IF, IHC, IP
WT1	12609-1-AP	Rabbit Poly	ELISA, WB, IP

Antibody Name	Cat No.	Type	Applications
WTAP	60188-1-IG	Mouse Mono	ELISA, WB, IHC
WTAP	10200-1-AP	Rabbit Poly	ELISA, IP, WB
XIAP	7 10037-1-IG	Rabbit Poly	ELISA, WB, IHC, IF
XIAP	23453-1-AP	Rabbit Poly	ELISA, WB
YES1-Specific	20243-1-AP	Rabbit Poly	ELISA, WB, IHC
ZAP70	22207-1-AP	Rabbit Poly	ELISA, IHC, WB, FC, IP
β-ENaC	14134-1-AP	Rabbit Poly	ELISA, WB

# CONTACT US

## Proteintech Group *US Head Office*

<b>PHONE</b>	1 (888) 4PTGLAB (1-888-478-4522) (toll free in USA), or 1(312) 455-8498 (outside USA)
<b>FAX</b>	1 (312) 455-8408
<b>ADDRESS</b>	Proteintech Group, Inc. 5400 Pearl Street, Suite 300, Rosemont, IL 60018, USA
<b>EMAIL</b>	proteintech@ptglab.com

## Proteintech Europe *United Kingdom*

<b>PHONE</b>	+44 (161) 2266144
<b>FAX</b>	+44 (161) 2321272
<b>ADDRESS</b>	Proteintech Europe, Ltd. Manchester Science Park, Kilburn House, Lloyd Street North, Manchester M15 6SE
<b>EMAIL</b>	europe@ptglab.com

## Proteintech Europe *Germany*

<b>EMAIL</b>	germany@ptglab.com <b>Sales and technical support only.</b>
--------------	--

## Proteintech *China Office*

<b>PHONE</b>	027-87931629
<b>FAX</b>	027-87931627
<b>ADDRESS</b>	Wuhan Sanying Biotechnologies D3-3, No.666 Gaoxin Avenue, Wuhan East Lake Hi-tech Development Zone Wuhan, Hubei, P.R.C
<b>EMAIL</b>	service@ptglab.com

## Support

Available 24 hours via Live Chat and 9-5 (CDT) via phone.

Email support also available.

**LIVE CHAT**  
[www.ptglab.com](http://www.ptglab.com)

**TWITTER**  
[@proteintech](https://twitter.com/proteintech)

**BLOG**  
[blog.ptglab.com](http://blog.ptglab.com)

**YOUTUBE**  
[www.youtube.com/Proteintech](http://www.youtube.com/Proteintech)



We are ISO 9001 and  
ISO 13485 accredited.

