

For Research Use Only

CUL4B Monoclonal antibody

Catalog Number: 60151-1-Ig

Featured Product

5 Publications



Basic Information

Catalog Number:

60151-1-Ig

Size:

150ul, Concentration: 2100 ug/ml by 8450 Nanodrop and 1000 ug/ml by Bradford method using BSA as the standard;

Source:

Mouse

Isotype:

IgG1

Immunogen Catalog Number:

AG3563

GenBank Accession Number:

BC036216

GeneID (NCBI):

8450

UNIPROT ID:

Q13620

Full Name:

cullin 4B

Calculated MW:

913 aa, 104 kDa

Observed MW:

102 kDa

Purification Method:

Protein G purification

CloneNo.:

4E10B10

Recommended Dilutions:

WB 1:1000-1:4000

IHC 1:50-1:500

Applications

Tested Applications:

WB, IHC, ELISA

Cited Applications:

WB, IHC

Species Specificity:

human, rat

Cited Species:

human, mouse

Note-IHC: suggested antigen retrieval with TE buffer pH 9.0; (*) Alternatively, antigen retrieval may be performed with citrate buffer pH 6.0

Positive Controls:

WB : HeLa cells, HEK-293 cells, ROS1728 cells

IHC : human gliomas tissue,

Background Information

Cullin-RING ligases (CRLs) complexes participate in the regulation of diverse cellular processes, including cell cycle progression, transcription, signal transduction and development (PMID: 21816341)(PMID: 21554755). Serving as the scaffold protein, cullins are crucial for the assembly of ligase complexes, which recognize and target various substrates for proteasomal degradation. Two cullin 4 (CUL4) proteins, CUL4A (87 kDa) and CUL4B(104 kDa), are two members in cullin family with 83% of identity. Mutations in human CUL4B are one of the major causes of X-linked mental retardation. Cul4b knockout mice demonstrated that CUL4B is indispensable for embryonic development in the mouse (PMID: 22606329).

Notable Publications

| Author | Pubmed ID | Journal | Application |
|--------------|-----------|------------------|-------------|
| Ziling Fang | 30483755 | Int J Oncol | |
| Min Zhong | 34153655 | Pathol Res Pract | WB,IHC |
| Alice Meroni | 36490343 | Sci Adv | WB |

Storage

Storage:

Store at -20°C. Stable for one year after shipment.

Storage Buffer:

PBS with 0.02% sodium azide and 50% glycerol, pH7.3

Aliquoting is unnecessary for -20°C storage

*** 20ul sizes contain 0.1% BSA

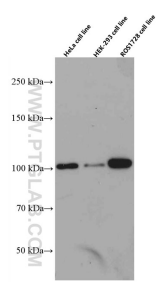
For technical support and original validation data for this product please contact:

T: 1 (888) 4PTGLAB (1-888-478-4522) (toll free in USA), or 1(312) 455-8498 (outside USA)

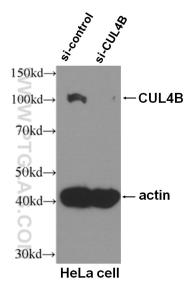
E: proteintech@ptglab.com
W: ptglab.com

This product is exclusively available under Proteintech Group brand and is not available to purchase from any other manufacturer.

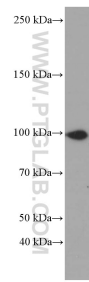
Selected Validation Data



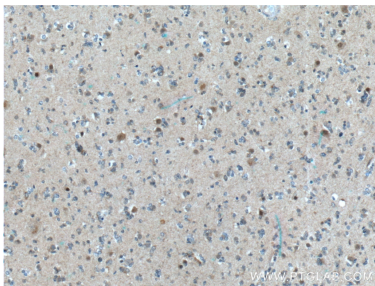
various lysates were subjected to SDS PAGE followed by western blot with 60151-1-Ig (CUL4B antibody) at dilution of 1:3000 incubated at room temperature for 1.5 hours.



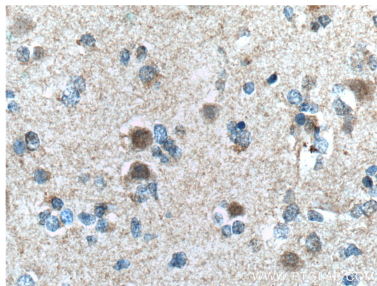
WB result of CUL4B antibody (60151-1-Ig, 1:500) with si-Control and si-CUL4B transfected HeLa cells.



HeLa cells were subjected to SDS PAGE followed by western blot with 60151-1-Ig (CUL4B Antibody) at dilution of 1:2000 incubated at room temperature for 1.5 hours.



Immunohistochemical analysis of paraffin-embedded human gliomas tissue slide using 60151-1-Ig (CUL4B Antibody) at dilution of 1:100 (under 10x lens). Heat mediated antigen retrieval with Tris-EDTA buffer (pH 9.0).



Immunohistochemical analysis of paraffin-embedded human gliomas tissue slide using 60151-1-Ig (CUL4B Antibody) at dilution of 1:100 (under 40x lens). Heat mediated antigen retrieval with Tris-EDTA buffer (pH 9.0).