

For Research Use Only

# GST Tag Polyclonal antibody

Catalog Number: 10000-O-AP

253 Publications



## Basic Information

Catalog Number:

10000-O-AP

Size:

150ul, Concentration: 900 ug/ml by Nanodrop;

Source:

Rabbit

Isotype:

IgG

GenBank Accession Number:

FN315687

GeneID (NCBI):

Full Name:

Calculated MW:

26 kDa

Purification Method:

Antigen affinity purification

Recommended Dilutions:

WB: 1:1000-1:6000

## Applications

Tested Applications:

WB, ELISA

Cited Applications:

WB, IF, IP, CoIP, ChIP, ELISA

Species Specificity:

recombinant protein

Cited Species:

human

Positive Controls:

WB: Recombinant protein,

## Background Information

GST (Glutathione S-Transferase) is a widely used protein tag encoded by the *Schistosoma japonicum*. GST provides both an easily detectable tag and a simple purification process with little effect on the biological function of the protein of interest. This GST-fusion protein can then be purified from cells via its high affinity for glutathione. Antibodies to GST are useful for checking protein expression both in plaques and on western blots as well as for immunoaffinity purification of proteins expressed in cells. This antibody can be used to detect the GST tagged protein. This antibody can be used as Rabbit IgG control in FC.

## Notable Publications

Author	Pubmed ID	Journal	Application
Xingfeng Liu	36131205	Nat Metab	WB
Tianyu Han	30231667	Autophagy	
Xiangying Luo	34536269	Aging (Albany NY)	WB

## Storage

Storage:

Store at -20°C. Stable for one year after shipment.

Storage Buffer:

PBS with 0.02% sodium azide and 50% glycerol, pH7.3

Aliquoting is unnecessary for -20°C storage

\*\*\* 20ul sizes contain 0.1% BSA

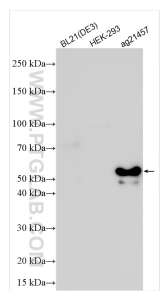
For technical support and original validation data for this product please contact:

T: 1 (888) 4PTGLAB (1-888-478-4522) (toll free in USA), or 1(312) 455-8498 (outside USA)

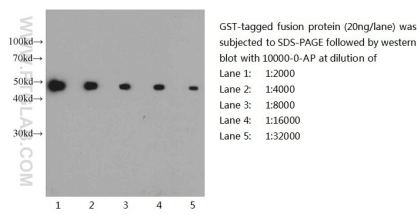
E: [proteintech@ptglab.com](mailto:proteintech@ptglab.com)  
W: [ptglab.com](http://ptglab.com)

This product is exclusively available under Proteintech Group brand and is not available to purchase from any other manufacturer.

## Selected Validation Data



Various lysates were subjected to SDS PAGE followed by western blot with 10000-0-AP (GST Tag antibody) at dilution of 1:3000 incubated at room temperature for 1.5 hours.



Western blot of GST-tagged fusion protein with anti-GST-tag (10000-0-AP) at various dilutions.