

For Research Use Only

RB1CC1 Polyclonal antibody

Catalog Number: 10043-2-AP

Featured Product

21 Publications



Basic Information

Catalog Number:

10043-2-AP

Size:

150ul, Concentration: 1500 ug/ml by Nanodrop and 620 ug/ml by Bradford method using BSA as the standard;

Source:

Rabbit

Isotype:

IgG

GenBank Accession Number:

BC017556

GeneID (NCBI):

9821

UNIPROT ID:

Q8TDY2

Full Name:

RB1-inducible coiled-coil 1

Calculated MW:

1594 aa, 183 kDa

Observed MW:

180-200 kDa

Purification Method:

Antigen affinity purification

Recommended Dilutions:

WB 1:500-1:2000

IHC 1:20-1:200

IF/ICC 1:10-1:100

Applications

Tested Applications:

WB, IHC, IF/ICC, ELISA

Cited Applications:

WB, IHC, IF, IP

Species Specificity:

human, mouse, rat

Cited Species:

human, mouse, rat

Note-IHC: suggested antigen retrieval with TE buffer pH 9.0; (*) Alternatively, antigen retrieval may be performed with citrate buffer pH 6.0

Positive Controls:

WB : HeLa cells, Jurkat cells, mouse brain tissue, MCF-7 cells

IHC : human breast cancer tissue, human testis tissue

IF/ICC : HeLa cells,

Background Information

RB1CC1, also named as RBICC, is implicated in the regulation of RB1 expression and functions as a DNA-binding transcription factor. It is a potent regulator of the RB1 pathway and a mediator that plays a crucial role in muscular differentiation [PMID:15968549]. Its expression is, thus, a prerequisite for myogenic differentiation. Involved in autophagy. RB1CC1 is required for autophagosome formation [PMID: 19258318]. It is probably involved in the tumorigenesis of breast cancer [PMID: 14533007]. RB1CC1 is frequently mutated in breast cancer and shows characteristics of a classical tumor suppressor gene [PMID: 21602932]. The immunogen of this antibody is C-terminal 154aa of RB1CC1.

Notable Publications

Author	Pubmed ID	Journal	Application
Jiangwei Zhang	26344566	Nat Cell Biol	IF
Liang Ge	25432021	Elife	WB
Chi-Jing Choong	33218272	Autophagy	WB

Storage

Storage:

Store at -20°C. Stable for one year after shipment.

Storage Buffer:

PBS with 0.02% sodium azide and 50% glycerol, pH7.3

Aliquoting is unnecessary for -20°C storage

*** 20ul sizes contain 0.1% BSA

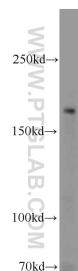
For technical support and original validation data for this product please contact:

T: 1 (888) 4PTGLAB (1-888-478-4522) (toll free in USA), or 1(312) 455-8498 (outside USA)

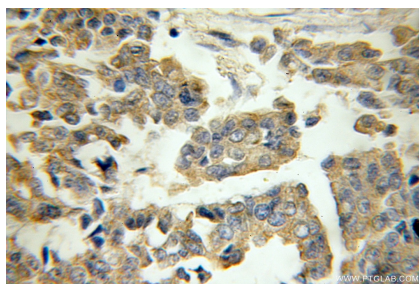
E: proteintech@ptglab.com
W: ptglab.com

This product is exclusively available under Proteintech Group brand and is not available to purchase from any other manufacturer.

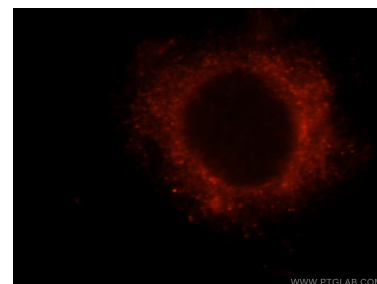
Selected Validation Data



HeLa cells were subjected to SDS PAGE followed by western blot with 10043-2-AP (RB1CC1 antibody) at dilution of 1:1000 incubated at room temperature for 1.5 hours.



Immunohistochemical analysis of paraffin-embedded human breast cancer using 10043-2-AP (RB1CC1 antibody) at dilution of 1:200 (under 40x lens).



Immunofluorescent analysis of HeLa cells, using RB1CC1 antibody 10043-2-AP at 1:25 dilution and Rhodamine-labeled goat anti-rabbit IgG (red).