

For Research Use Only

FKBPL Polyclonal antibody

Catalog Number: 10060-1-AP

Featured Product

22 Publications



Basic Information

Catalog Number:

10060-1-AP

Size:

150ul, Concentration: 500 ug/ml by Nanodrop and 260 ug/ml by Bradford method using BSA as the standard;

Source:

Rabbit

Isotype:

IgG

Immunogen Catalog Number:

AG0112

GenBank Accession Number:

BC004168

GeneID (NCBI):

63943

UNIPROT ID:

Q9UIM3

Full Name:

FK506 binding protein like

Calculated MW:

349 aa, 38 kDa

Observed MW:

42-48 kDa

Purification Method:

Antigen affinity purification

Recommended Dilutions:

WB 1:1000-1:4000

IP 0.5-4.0 ug for 1.0-3.0 mg of total protein lysate

IHC 1:300-1:1200

Applications

Tested Applications:

WB, IHC, FC (Intra), IP, ELISA

Cited Applications:

WB, IHC, IF, ChIP

Species Specificity:

human

Cited Species:

human, mouse, rat

Note-IHC: suggested antigen retrieval with TE buffer pH 9.0; (*) Alternatively, antigen retrieval may be performed with citrate buffer pH 6.0

Positive Controls:

WB : HEK-293 cells, HeLa cells, human brain tissue, human testis tissue, Jurkat cells, MCF-7 cells, T-47D cells, MDA-MB-453s cells

IP : MCF-7 cells,

IHC : human breast cancer tissue, human testis tissue

Background Information

FKBPL, also named as DIR1, NG7 and WISp39, has similarity to the immunophilin protein family, which plays a role in immunoregulation and basic cellular processes involving protein folding and trafficking. FKBPL levels may be a prognostic indicator and determinant of response to endocrine therapy (PMID:20103631, 15664193). It can be detected the band between 38 kDa and 48 kDa by western blot.

Notable Publications

Author	Pubmed ID	Journal	Application
Rachel Bennett	26419658	Nanomedicine (Lond)	WB, IHC
Daniilo D. Obradović	36295491	Medicina (Kaunas)	IHC
Eoghan J Mulholland	31676385	J Control Release	WB

Storage

Storage:

Store at -20°C. Stable for one year after shipment.

Storage Buffer:

PBS with 0.02% sodium azide and 50% glycerol pH 7.3.

Aliquoting is unnecessary for -20°C storage

*** 20ul sizes contain 0.1% BSA

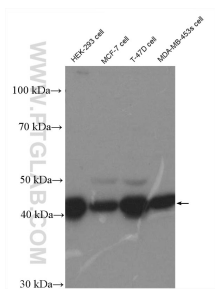
For technical support and original validation data for this product please contact:

T: 1 (888) 4PTGLAB (1-888-478-4522) (toll free in USA), or 1(312) 455-8498 (outside USA)

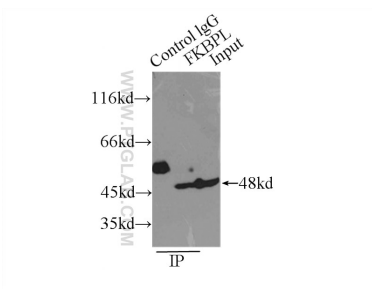
E: proteintech@ptglab.com
W: ptglab.com

This product is exclusively available under Proteintech Group brand and is not available to purchase from any other manufacturer.

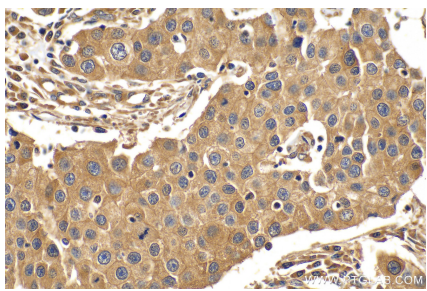
Selected Validation Data



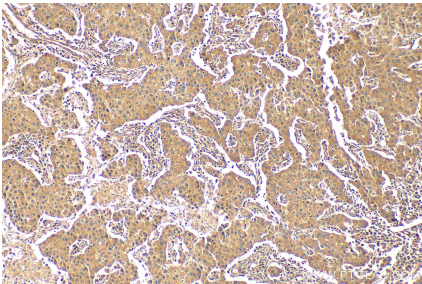
Various lysates were subjected to SDS PAGE followed by western blot with 10060-1-AP (FKBPL antibody) at dilution of 1:2000 incubated at room temperature for 1.5 hours.



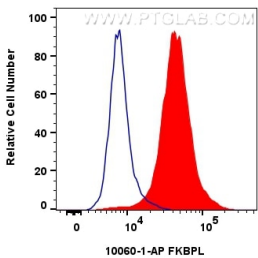
IP result of anti-FKBPL (IP:10060-1-AP, 3ug; Detection:10060-1-AP 1:800) with MCF-7 cells lysate 2500ug.



Immunohistochemical analysis of paraffin-embedded human breast cancer tissue slide using 10060-1-AP (FKBPL antibody) at dilution of 1:600 (under 40x lens). Heat mediated antigen retrieval with Tris-EDTA buffer (pH 9.0).



Immunohistochemical analysis of paraffin-embedded human breast cancer tissue slide using 10060-1-AP (FKBPL antibody) at dilution of 1:600 (under 10x lens). Heat mediated antigen retrieval with Tris-EDTA buffer (pH 9.0).



1x10⁶ HeLa cells were intracellularly stained with 0.4 ug FKBPL Polyclonal antibody (10060-1-AP) and CoraLite®488-Conjugated Goat Anti-Rabbit IgG(H+L) (SA00013-2)(red), or 0.4 ug Rabbit IgG control Rabbit PolyAb (30000-0-AP) (blue). Cells were fixed with 4% PFA and permeabilized with Flow Cytometry Perm Buffer (PF00011-C).