

For Research Use Only

# FKBPL Polyclonal antibody, PBS Only

Catalog Number: 10060-1-PBS

Featured Product



## Basic Information

### Catalog Number:

10060-1-PBS

### Size:

100ug, Concentration: 1mg/ml by Nanodrop;

### Source:

Rabbit

### Isotype:

IgG

### Immunogen Catalog Number:

AG0112

### GenBank Accession Number:

BC004168

### GeneID (NCBI):

63943

### UNIPROT ID:

Q9UIM3

### Full Name:

FK506 binding protein like

### Calculated MW:

349 aa, 38 kDa

### Observed MW:

42-48 kDa

### Purification Method:

Antigen affinity purification

## Applications

### Tested Applications:

WB, IHC, FC (Intra), IP, ELISA

### Species Specificity:

human

## Background Information

FKBPL, also named as DIR1, NG7 and WISp39, has similarity to the immunophilin protein family, which plays a role in immunoregulation and basic cellular processes involving protein folding and trafficking. FKBPL levels may be a prognostic indicator and determinant of response to endocrine therapy (PMID:20103631, 15664193). It can be detected the band between 38 kDa and 48 kDa by western blot.

## Storage

### Storage:

Store at -80°C.

### Storage Buffer:

PBS only, pH7.3

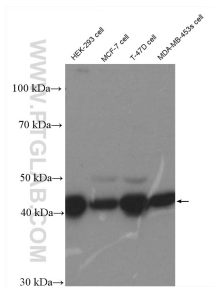
For technical support and original validation data for this product please contact:

T: 1 (888) 4PTGLAB (1-888-478-4522) (toll free in USA), or 1(312) 455-8498 (outside USA)

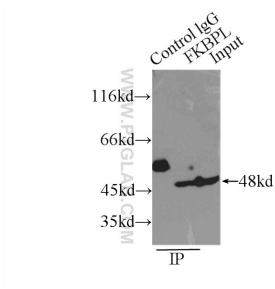
E: [proteintech@ptglab.com](mailto:proteintech@ptglab.com)  
W: [ptglab.com](http://ptglab.com)

This product is exclusively available under Proteintech Group brand and is not available to purchase from any other manufacturer.

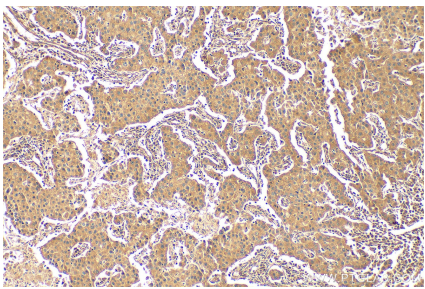
Selected Validation Data



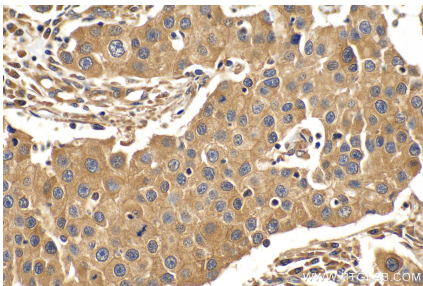
Various lysates were subjected to SDS PAGE followed by western blot with 10060-1-AP (FKBPL antibody) at dilution of 1:2000 incubated at room temperature for 1.5 hours. This data was developed using the same antibody clone with 10060-1-PBS in a different storage buffer formulation.



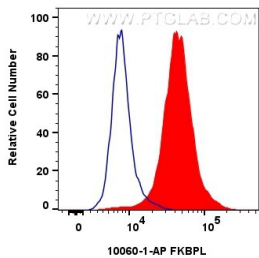
IP result of anti-FKBPL (IP:10060-1-AP, 3ug; Detection:10060-1-AP 1:800) with MCF-7 cells lysate 2500ug. This data was developed using the same antibody clone with 10060-1-PBS in a different storage buffer formulation.



Immunohistochemical analysis of paraffin-embedded human breast cancer tissue slide using 10060-1-AP (FKBPL antibody) at dilution of 1:600 (under 10x lens). Heat mediated antigen retrieval with Tris-EDTA buffer (pH 9.0). This data was developed using the same antibody clone with 10060-1-PBS in a different storage buffer formulation.



Immunohistochemical analysis of paraffin-embedded human breast cancer tissue slide using 10060-1-AP (FKBPL antibody) at dilution of 1:600 (under 40x lens). Heat mediated antigen retrieval with Tris-EDTA buffer (pH 9.0). This data was developed using the same antibody clone with 10060-1-PBS in a different storage buffer formulation.



1x10<sup>6</sup> HeLa cells were intracellularly stained with 0.4 ug FKBPL Polyclonal antibody (10060-1-AP) and CoraLite®488-Conjugated AffiniPure Goat Anti-Rabbit IgG(H+L) (SA00013-2)(red), or 0.4 ug Rabbit IgG control Rabbit PolyAb (30000-0-AP) (blue). Cells were fixed with 4% PFA and permeabilized with Flow Cytometry Perm Buffer (PF00011-C). This data was developed using the same antibody clone with 10060-1-PBS in a different storage buffer formulation.