

For Research Use Only

Beta Tubulin Polyclonal antibody

Catalog Number: 10063-2-AP **7 Publications**



Basic Information

Catalog Number: 10063-2-AP	GenBank Accession Number: BC001352	Purification Method: Antigen affinity purification
Size: 150ul , Concentration: 300 µg/ml by Nanodrop and 200 µg/ml by Bradford method using BSA as the standard;	GeneID (NCBI): 347733	Recommended Dilutions: WB 1:500-1:3000
Source: Rabbit	Full Name: tubulin, beta 2B	
Isotype: IgG	Calculated MW: 50 kDa	
Immunogen Catalog Number: AG0108	Observed MW: 50kda	

Applications

Tested Applications: WB, ELISA	Positive Controls: WB : mouse brain tissue, rat brain tissue
Cited Applications: CoIP, IP, WB	
Species Specificity: human, mouse, rat	
Cited Species: human, mouse, rat	

Background Information

There are five tubulins in human cells. They form heterodimers, which multimerize to form a microtubule filament. An alpha and beta tubulin heterodimer is the basic structural unit of microtubules.

Notable Publications

Author	Pubmed ID	Journal	Application
Tingting Feng	34652890	Cancer Biol Med	WB,IP
Michael Föhling	23970125	J Am Soc Nephrol	WB
Kristina Tammimies	23036959	Biol Psychiatry	CoIP

Storage

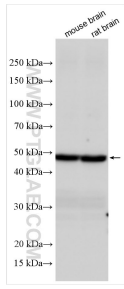
Storage:
Store at -20°C. Stable for one year after shipment.
Storage Buffer:
PBS with 0.02% sodium azide and 50% glycerol pH 7.3.
Aliquoting is unnecessary for -20°C storage

*** 20ul sizes contain 0.1% BSA

For technical support and original validation data for this product please contact:
T: 1 (888) 4PTGLAB (1-888-478-4522) (toll free in USA), or 1(312) 455-8498 (outside USA) E: proteintech@ptglab.com W: ptglab.com

This product is exclusively available under Proteintech Group brand and is not available to purchase from any other manufacturer.

Selected Validation Data



Various lysates were subjected to SDS PAGE followed by western blot with 10063-2-AP (Beta Tubulin antibody) at dilution of 1:1500 incubated at room temperature for 1.5 hours.