

For Research Use Only

# RB1CC1 Polyclonal antibody

Catalog Number: 10069-1-AP

Featured Product

2 Publications



## Basic Information

### Catalog Number:

10069-1-AP

### Size:

150ul, Concentration: 600 ug/ml by Nanodrop;

### Source:

Rabbit

### Isotype:

IgG

### Immunogen Catalog Number:

AG0003

### GenBank Accession Number:

BC017556

### GeneID (NCBI):

9821

### UNIPROT ID:

Q8TDY2

### Full Name:

RB1-inducible coiled-coil 1

### Calculated MW:

1594 aa, 183 kDa

### Observed MW:

183 kDa

### Purification Method:

Antigen affinity purification

### Recommended Dilutions:

WB 1:500-1:2000

IHC 1:250-1:1000

IF/ICC 1:200-1:800

## Applications

### Tested Applications:

WB, IHC, IF/ICC, ELISA

### Cited Applications:

WB, IF

### Species Specificity:

human, mouse

### Cited Species:

human

### Positive Controls:

WB : MCF7 cells, NIH/3T3 cells, HEK-293 cells, HeLa cells, mouse skeletal muscle tissue

IHC : human appendicitis tissue, human breast cancer tissue, human kidney tissue

IF/ICC : HeLa cells,

**Note-IHC: suggested antigen retrieval with TE buffer pH 9.0; (\*) Alternatively, antigen retrieval may be performed with citrate buffer pH 6.0**

## Background Information

RB1CC1, also named as RBICC, is implicated in the regulation of RB1 expression and functions as a DNA-binding transcription factor. It is a potent regulator of the RB1 pathway and a mediator that plays a crucial role in muscular differentiation. Its expression is, thus, a prerequisite for myogenic differentiation. Involved in autophagy. RB1CC1 is required for autophagosome formation. It is probably involved in the tumorigenesis of breast cancer. RB1CC1 is frequently mutated in breast cancer and shows characteristics of a classical tumor suppressor gene. This antibody is a rabbit polyclonal antibody raised against residues near the C terminus of human RB1CC1.

## Notable Publications

Author	Pubmed ID	Journal	Application
Donghoon Lee	35704754	Proc Natl Acad Sci U S A	WB
Claudia Puri	29634932	Dev Cell	IF

## Storage

### Storage:

Store at -20°C. Stable for one year after shipment.

### Storage Buffer:

PBS with 0.02% sodium azide and 50% glycerol pH 7.3.

Aliquoting is unnecessary for -20°C storage

\*\*\* 20ul sizes contain 0.1% BSA

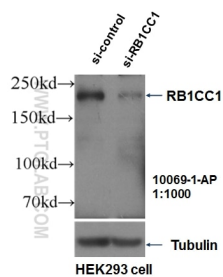
For technical support and original validation data for this product please contact:

T: 1 (888) 4PTGLAB (1-888-478-4522) (toll free in USA), or 1(312) 455-8498 (outside USA)

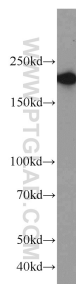
E: [proteintech@ptglab.com](mailto:proteintech@ptglab.com)  
W: [ptglab.com](http://ptglab.com)

This product is exclusively available under Proteintech Group brand and is not available to purchase from any other manufacturer.

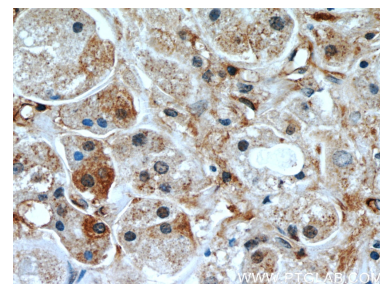
## Selected Validation Data



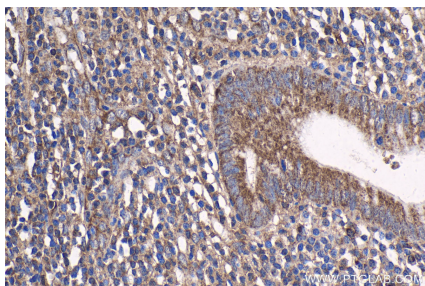
WB result of RB1CC1 antibody (10069-1-AP, 1:1000) with si-Control and si-RB1CC1 transfected HEK293 cells.



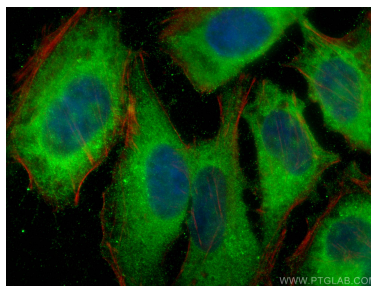
MCF7 cells were subjected to SDS PAGE followed by western blot with 10069-1-AP (RB1CC1 antibody) at dilution of 1:1000 incubated at room temperature for 1.5 hours.



Immunohistochemical analysis of paraffin-embedded human breast cancer slide using 10069-1-AP (RB1CC1 Antibody) at dilution of 1:50.



Immunohistochemical analysis of paraffin-embedded human appendicitis tissue slide using 10069-1-AP (RB1CC1 antibody) at dilution of 1:500 (under 40x lens). Heat mediated antigen retrieval with Tris-EDTA buffer (pH 9.0).



Immunofluorescent analysis of (4% PFA) fixed HeLa cells using RB1CC1 antibody (10069-1-AP) at dilution of 1:400 and CoraLite®488-Conjugated AffiniPure Goat Anti-Rabbit IgG(H+L), CL594-phalloidin (red).