

For Research Use Only

# UBC9 Polyclonal antibody

Catalog Number:10070-1-AP

Featured Product

7 Publications



## Basic Information

### Catalog Number:

10070-1-AP

### Size:

150ul , Concentration: 220 ug/ml by Nanodrop and 213 ug/ml by Bradford method using BSA as the standard;

### Source:

Rabbit

### Isotype:

IgG

### Immunogen Catalog Number:

AG0111

### GenBank Accession Number:

BC051289

### GeneID (NCBI):

7329

### UNIPROT ID:

P63279

### Full Name:

ubiquitin-conjugating enzyme E2l (UBC9 homolog, yeast)

### Calculated MW:

18 kDa

### Observed MW:

18 kDa

### Purification Method:

Antigen affinity purification

### Recommended Dilutions:

WB 1:1000-1:4000

IHC 1:50-1:500

IF/ICC 1:50-1:500

## Applications

### Tested Applications:

WB, IHC, IF/ICC, ELISA

### Cited Applications:

WB, IP

### Species Specificity:

human, mouse, rat

### Cited Species:

human, mouse

**Note-IHC: suggested antigen retrieval with TE buffer pH 9.0; (\*) Alternatively, antigen retrieval may be performed with citrate buffer pH 6.0**

### Positive Controls:

**WB** : HEK-293 cells, HeLa cells, mouse testis tissue, rat testis tissue

**IHC** : human lung cancer tissue, human prostate cancer tissue

**IF/ICC** : HeLa cells,

## Background Information

UBC9 is also named as UBE2l, UBCE9 and belongs to the ubiquitin-conjugating enzyme family. It is a homologue of the E2 ubiquitin conjugating enzyme and participates in the covalent linking of SUMO-1 molecule to the target protein. This protein is present at a high level in spleen and lung. Moderate level of UBC9 is detected in kidney and liver. Low amount of UBC9 is observed in brain, whereas the 18 kDa band of UBC9 is barely visible or absent in heart and skeletal muscle. In heart and muscle extracts the UBC9 antibodies recognizes a 38 kDa protein band, but this band is not visible in extracts of other rat tissues(PMID:14739995).

## Notable Publications

Author	Pubmed ID	Journal	Application
Xifeng Hu	35921711	Biochem Biophys Res Commun	WB,IP
Xiangju Wu	36005757	J Virol	WB
Lizhen Wang	39432240	ACS Chem Biol	WB

## Storage

### Storage:

Store at -20°C. Stable for one year after shipment.

### Storage Buffer:

PBS with 0.02% sodium azide and 50% glycerol pH 7.3.

Aliquoting is unnecessary for -20°C storage

\*\*\* 20ul sizes contain 0.1% BSA

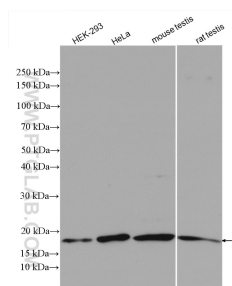
For technical support and original validation data for this product please contact:

T: 1 (888) 4PTGLAB (1-888-478-4522) (toll free in USA), or 1(312) 455-8498 (outside USA)

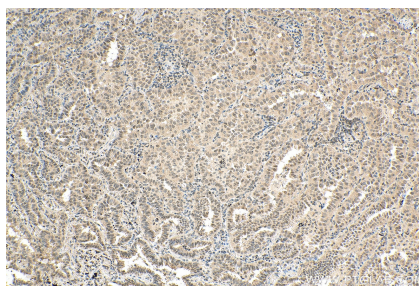
E: proteintech@ptglab.com  
W: ptglab.com

This product is exclusively available under Proteintech Group brand and is not available to purchase from any other manufacturer.

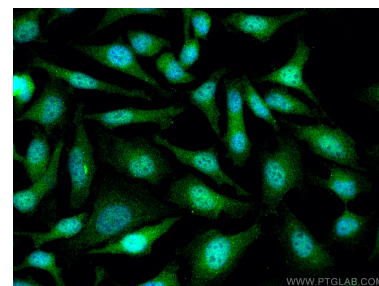
## Selected Validation Data



Various lysates were subjected to SDS PAGE followed by western blot with 10070-1-AP (UBC9 antibody) at dilution of 1:2000 incubated at room temperature for 1.5 hours.



Immunohistochemical analysis of paraffin-embedded human lung cancer tissue slide using 10070-1-AP (UBC9 antibody) at dilution of 1:200 (under 10x lens). Heat mediated antigen retrieval with Tris-EDTA buffer (pH 9.0).



Immunofluorescent analysis of (4% PFA) fixed HeLa cells using UBC9 antibody (10070-1-AP) at dilution of 1:200 and CoraLite®488-Conjugated AffiniPure Goat Anti-Rabbit IgG(H+L).