

For Research Use Only

Importin Beta Polyclonal antibody

Catalog Number: 10077-1-AP

Featured Product

16 Publications



Basic Information

Catalog Number:

10077-1-AP

Size:

150ul, Concentration: 600 ug/ml by Nanodrop;

Source:

Rabbit

Isotype:

IgG

Immunogen Catalog Number:

AG0122

GenBank Accession Number:

BC003572

GeneID (NCBI):

3837

UNIPROT ID:

Q14974

Full Name:

karyopherin (importin) beta 1

Calculated MW:

97 kDa

Observed MW:

90-97 kDa

Purification Method:

Antigen affinity purification

Recommended Dilutions:

WB 1:1000-1:4000

IHC 1:20-1:200

IF/ICC 1:50-1:500

Applications

Tested Applications:

WB, IHC, IF/ICC, FC (Intra), ELISA

Cited Applications:

WB, IHC, IF, IP, CoIP

Species Specificity:

human, mouse, rat

Cited Species:

human, mouse

Note-IHC: suggested antigen retrieval with TE buffer pH 9.0; (*) Alternatively, antigen retrieval may be performed with citrate buffer pH 6.0

Positive Controls:

WB: A2780 cells, mouse brain tissue, rat brain tissue, HeLa cells, NIH/3T3 cells, C6 cells, HT-1080 cells, PC-12 cells

IHC: human colon cancer tissue, mouse brain tissue

IF/ICC: HeLa cells,

Background Information

Importin beta1, also known karyopherin beta or KPNB1, is a nuclear transport receptor that plays a key role in the nuclear import process. Importin beta1 and importin alpha work in concert to transport cargo into the nucleus, functioning as an essential component of the classical nuclear localization signal (NLS) pathway. Elevated expression of importin beta1 has been found in cervical tumors. (22125623)

Notable Publications

Author	Pubmed ID	Journal	Application
Zongfu Pan	36192735	Mol Cancer	WB
Hongmin Yao	36300763	Autophagy	WB, IHC
Anna Nakanishi	36366568	Viruses	WB

Storage

Storage:

Store at -20°C. Stable for one year after shipment.

Storage Buffer:

PBS with 0.02% sodium azide and 50% glycerol pH 7.3.

Aliquoting is unnecessary for -20°C storage

*** 20ul sizes contain 0.1% BSA

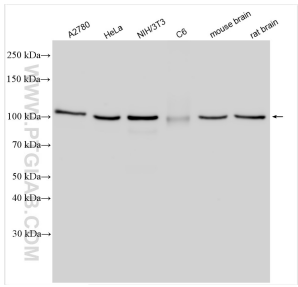
For technical support and original validation data for this product please contact:

T: 1 (888) 4PTGLAB (1-888-478-4522) (toll free in USA), or 1(312) 455-8498 (outside USA)

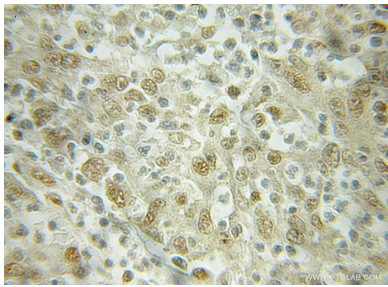
E: proteintech@ptglab.com
W: ptglab.com

This product is exclusively available under Proteintech Group brand and is not available to purchase from any other manufacturer.

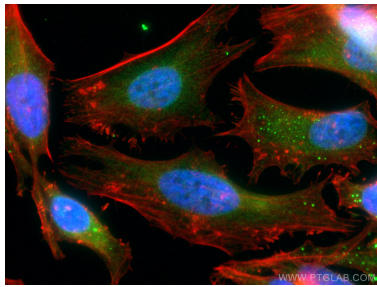
Selected Validation Data



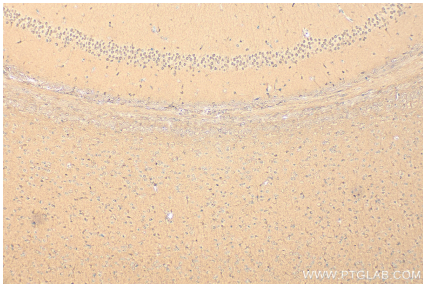
Various lysates were subjected to SDS PAGE followed by western blot with 10077-1-AP (Importin Beta antibody) at dilution of 1:2000 incubated at room temperature for 1.5 hours.



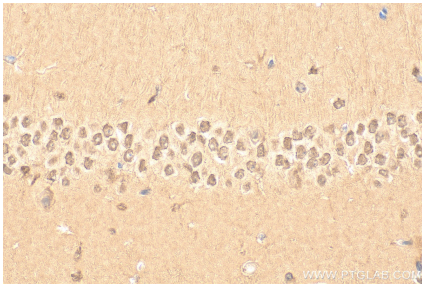
Immunohistochemical analysis of paraffin-embedded human colon cancer using 10077-1-AP (Importin beta antibody) at dilution of 1:50 (under 10x lens).



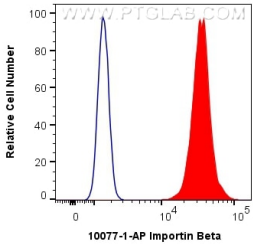
Immunofluorescent analysis of (4% PFA) fixed HeLa cells using Importin Beta antibody (10077-1-AP) at dilution of 1:200 and CoraLite®488-Conjugated AffiniPure Goat Anti-Rabbit IgG(H+L), CL594-Phalloidin (red).



Immunohistochemical analysis of paraffin-embedded mouse brain tissue slide using 10077-1-AP (Importin Beta antibody) at dilution of 1:400 (under 10x lens). Heat mediated antigen retrieval with Tris-EDTA buffer (pH 9.0).



Immunohistochemical analysis of paraffin-embedded mouse brain tissue slide using 10077-1-AP (Importin Beta antibody) at dilution of 1:400 (under 40x lens). Heat mediated antigen retrieval with Tris-EDTA buffer (pH 9.0).



1X10⁶ Jurkat cells were intracellularly stained with 0.4 ug Anti-Human Importin Beta (10077-1-AP) and CoraLite®488-Conjugated AffiniPure Goat Anti-Rabbit IgG(H+L) at dilution 1:1000 (red), or 0.4 ug Isotype Control. Cells were fixed with 4% PFA and permeabilized with Flow Cytometry Perm Buffer (PF00011-C).