

For Research Use Only

# ATG7 Polyclonal antibody

Catalog Number:10088-2-AP

Featured Product

141 Publications



## Basic Information

### Catalog Number:

10088-2-AP

### Size:

150ul , Concentration: 500 ug/ml by Nanodrop;

### Source:

Rabbit

### Isotype:

IgG

### Immunogen Catalog Number:

AG0142

### GenBank Accession Number:

BC000091

### GeneID (NCBI):

10533

### UNIPROT ID:

O95352

### Full Name:

ATG7 autophagy related 7 homolog (S. cerevisiae)

### Calculated MW:

78 kDa

### Observed MW:

68-78 kDa

### Purification Method:

Antigen affinity purification

### Recommended Dilutions:

WB 1:500-1:3000

IP 0.5-4.0 ug for 1.0-3.0 mg of total protein lysate

IHC 1:50-1:500

IF/ICC 1:50-1:500

## Applications

### Tested Applications:

WB, IHC, IF/ICC, IP, ELISA

### Cited Applications:

WB, IHC, IF, IP, CoIP

### Species Specificity:

human, mouse

### Cited Species:

human, mouse, rat, pig, chicken, hamster, goat, turtle, prawn

**Note-IHC: suggested antigen retrieval with TE buffer pH 9.0; (\*) Alternatively, antigen retrieval may be performed with citrate buffer pH 6.0**

### Positive Controls:

**WB** : HeLa cells, HEK-293 cells, HepG2 cells, Jurkat cells, NIH/3T3 cells, mouse liver tissue, THP-1 cells, U2OS cells

**IP** : HT-1080 cells, NIH/3T3 cells

**IHC** : human cervical cancer tissue, mouse kidney tissue

**IF/ICC** : HepG2 cells,

## Background Information

Atg7 is an E1-like enzyme that is specifically involved in autophagosome formation and is essential for autophagy. As an autophagic-related protein it is required for linking to Atg12, Atg5 and Atg8, which are essential for Atg conjugation and autophagosome formation. Atg7 has been reported as an important regulator of autophagy with starvation-induced or chemotherapeutic agent treatment. The high expression level of ATG7 is related to the survival of patients with breast cancer. There are several isoforms of ATG7 protein ranged from 68 kDa to 78 kDa.

## Notable Publications

Author	Pubmed ID	Journal	Application
Minfen Zhang	34520393	Aging (Albany NY)	WB
Yannan Liu	30207362	Food Funct	WB,IHC
Weiduo Hou	36358952	Biomolecules	WB

## Storage

### Storage:

Store at -20°C. Stable for one year after shipment.

### Storage Buffer:

PBS with 0.02% sodium azide and 50% glycerol, pH7.3

Aliquoting is unnecessary for -20°C storage

\*\*\* 20ul sizes contain 0.1% BSA

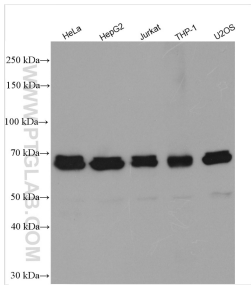
For technical support and original validation data for this product please contact:

T: 1 (888) 4PTGLAB (1-888-478-4522) (toll free in USA), or 1(312) 455-8498 (outside USA)

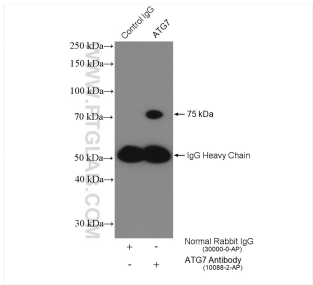
E: proteintech@ptglab.com  
W: ptglab.com

This product is exclusively available under Proteintech Group brand and is not available to purchase from any other manufacturer.

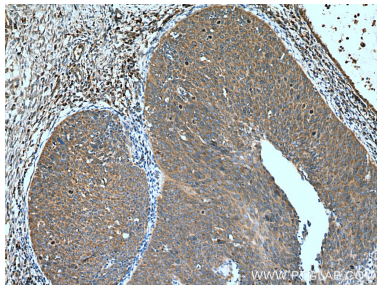
Selected Validation Data



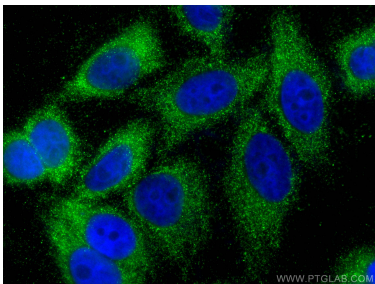
Various lysates were subjected to SDS PAGE followed by western blot with 10088-2-AP (ATG7 antibody) at dilution of 1:1500 incubated at room temperature for 1.5 hours.



IP result of anti-ATG7 (IP:10088-2-AP, 4ug; Detection:10088-2-AP 1:500) with HT-1080 cells lysate 3600 ug.



Immunohistochemical analysis of paraffin-embedded human cervical cancer tissue slide using 10088-2-AP (ATG7 antibody) at dilution of 1:200 (under 10x lens). Heat mediated antigen retrieval with Tris-EDTA buffer (pH 9.0).



Immunofluorescent analysis of (-20°C Ethanol) fixed HepG2 cells using ATG7 antibody (10088-2-AP) at dilution of 1:200 and CoraLite®488-Conjugated Goat Anti-Rabbit IgG(H+L).