

For Research Use Only

EEF1B2 Polyclonal antibody

Catalog Number: 10095-2-AP

Featured Product

5 Publications



Basic Information

Catalog Number:

10095-2-AP

Size:

150ul, Concentration: 300 ug/ml by Nanodrop and 180 ug/ml by Bradford method using BSA as the standard;

Source:

Rabbit

Isotype:

IgG

Immunogen Catalog Number:

AG0135

GenBank Accession Number:

BC000211

GeneID (NCBI):

1933

UNIPROT ID:

P24534

Full Name:

eukaryotic translation elongation factor 1 beta 2

Calculated MW:

25 kDa

Observed MW:

30-34 kDa

Purification Method:

Antigen affinity purification

Recommended Dilutions:

WB 1:2000-1:10000

IP 0.5-4.0 ug for 1.0-3.0 mg of total protein lysate

IHC 1:250-1:1000

IF/ICC 1:50-1:500

Applications

Tested Applications:

WB, IHC, IF/ICC, IP, ELISA

Cited Applications:

WB, IHC, IP, RIP, IF

Species Specificity:

human, mouse, rat

Cited Species:

human, mouse

Note-IHC: suggested antigen retrieval with TE buffer pH 9.0; (*) Alternatively, antigen retrieval may be performed with citrate buffer pH 6.0

Positive Controls:

WB : PC-3 cells, RAW264.7, Jurkat cells, HEK-293 cells, HeLa cells, SKOV-3 cells

IP : Jurkat cells,

IHC : human colon tissue, human breast cancer tissue, human pancreas cancer tissue

IF/ICC : MCF-7 cells,

Background Information

In eukaryotes, the translation elongation factor eEF1A responsible for transporting amino-acylated tRNA to the ribosome forms a higher-order complex, eEF1H, with its guanine-nucleotide-exchange factor eEF1B. eEF1B consists of three subunits: eEF1B alpha, eEF1B beta and eEF1B gamma. The eEF1B2 possess the nucleotide-exchange activity. Although several models on the basis of in vitro experiments have been proposed for the macromolecular organization of the eEF1H complex, these models differ in various aspects. The human eukaryote elongation factor 1 beta 2 (eEF1B2) migrated as a 30-34 kDa protein in SDS-PAGE. This antibody is a rabbit polyclonal antibody raised against residues near the N terminus of human EEF1B2.

Notable Publications

Author	Pubmed ID	Journal	Application
Ji-Hang Yuan	28553938	Nat Cell Biol	RIP
Shuhei Sammaibashi	30008712	Front Microbiol	WB
Yuan Cao	25436608	PLoS One	WB, IHC, IF

Storage

Storage:

Store at -20°C. Stable for one year after shipment.

Storage Buffer:

PBS with 0.02% sodium azide and 50% glycerol pH 7.3.

Aliquoting is unnecessary for -20°C storage

*** 20ul sizes contain 0.1% BSA

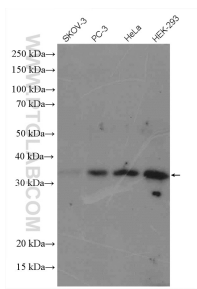
For technical support and original validation data for this product please contact:

T: 1 (888) 4PTGLAB (1-888-478-4522) (toll free in USA), or 1(312) 455-8498 (outside USA)

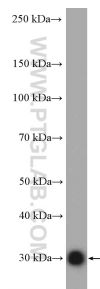
E: proteintech@ptglab.com
W: ptglab.com

This product is exclusively available under Proteintech Group brand and is not available to purchase from any other manufacturer.

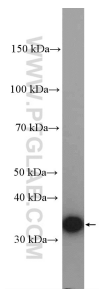
Selected Validation Data



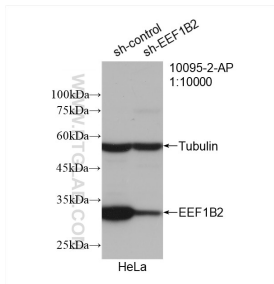
Various lysates were subjected to SDS PAGE followed by western blot with 10095-2-AP (EEF1B2 antibody) at dilution of 1:5000 incubated at room temperature for 1.5 hours.



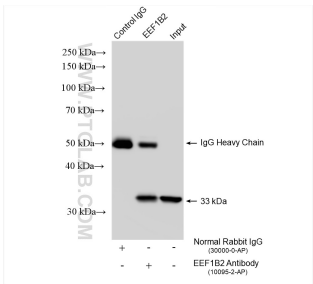
PC-3 cells were subjected to SDS PAGE followed by western blot with 10095-2-AP (EEF1B2 antibody) at dilution of 1:5000 incubated at room temperature for 1.5 hours.



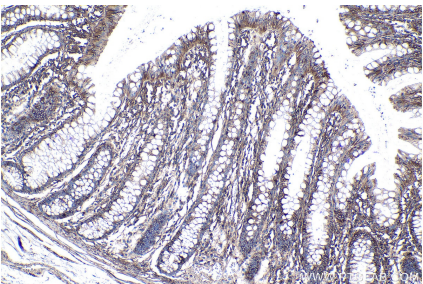
HeLa cells were subjected to SDS PAGE followed by western blot with 10095-2-AP (EEF1B2 antibody) at dilution of 1:5000 incubated at room temperature for 1.5 hours.



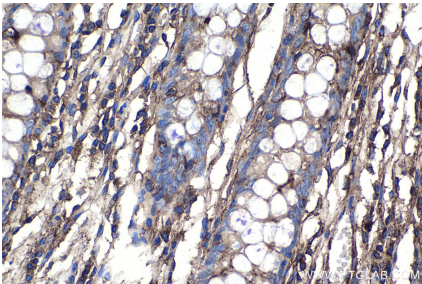
WB result of EEF1B2 antibody (10095-2-AP; 1:10000; incubated at room temperature for 1.5 hours) with sh-Control and sh-EEF1B2 transfected HeLa cells.



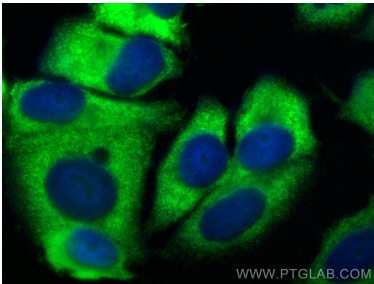
IP result of anti-EEF1B2 (IP:10095-2-AP, 4ug; Detection:10095-2-AP 1:6000) with Jurkat cells lysate 1400 ug.



Immunohistochemical analysis of paraffin-embedded human colon tissue slide using 10095-2-AP (EEF1B2 antibody) at dilution of 1:500 (under 10x lens). Heat mediated antigen retrieval with Tris-EDTA buffer (pH 9.0).



Immunohistochemical analysis of paraffin-embedded human colon tissue slide using 10095-2-AP (EEF1B2 antibody) at dilution of 1:500 (under 40x lens). Heat mediated antigen retrieval with Tris-EDTA buffer (pH 9.0).



Immunofluorescent analysis of (-20°C Methanol) fixed MCF-7 cells using EEF1B2 antibody (10095-2-AP) at dilution of 1:200 and CoraLite®488-Conjugated Goat Anti-Rabbit IgG(H+L) (SA00013-2).