

For Research Use Only

# PITRM1 Polyclonal antibody

Catalog Number: 10101-2-AP

2 Publications



## Basic Information

### Catalog Number:

10101-2-AP

### Size:

150ul, Concentration: 500 ug/ml by Nanodrop and 140 ug/ml by Bradford method using BSA as the standard;

### Source:

Rabbit

### Isotype:

IgG

### Immunogen Catalog Number:

AG0150

### GenBank Accession Number:

BC001150

### GeneID (NCBI):

10531

### UNIPROT ID:

Q5JRX3

### Full Name:

pitrilysin metallopeptidase 1

### Calculated MW:

60 kDa, 117 kDa

### Observed MW:

110-117 kDa

### Purification Method:

Antigen affinity purification

### Recommended Dilutions:

WB 1:200-1:1000

IP 0.5-4.0 ug for 1.0-3.0 mg of total protein lysate

IHC 1:100-1:400

IF/ICC 1:200-1:800

## Applications

### Tested Applications:

WB, IHC, IF/ICC, IP, ELISA

### Cited Applications:

WB

### Species Specificity:

human, mouse, rat

### Cited Species:

human, mouse

**Note-IHC: suggested antigen retrieval with TE buffer pH 9.0; (\*) Alternatively, antigen retrieval may be performed with citrate buffer pH 6.0**

### Positive Controls:

**WB**: human placenta tissue, A549 cells, mouse testis tissue

**IP**: A549 cells,

**IHC**: human breast cancer tissue, human osteosarcoma tissue

**IF/ICC**: A549 cells,

## Background Information

PITRM1 (Presequence protease, mitochondrial) is a ATP-independent protease that degrades mitochondrial transit peptides after their cleavage. It is specific for peptides in the range of 10 to 65 residues and able to degrade amyloid beta A4 (APP) protein when it accumulates in mitochondrion, suggesting a link with Alzheimer disease. It shows a preference for cleavage after small polar residues and before basic residues, but without any positional preference (PMID:16849325). This protein has a calculated molecular mass of 117kD and it is expressed widely. This antibody is specific to PITRM1.

## Notable Publications

Author	Pubmed ID	Journal	Application
Evelyn Fessler	35388015	Nat Commun	WB
Mitchell Andrew J AJ	23894327	PLoS One	WB

## Storage

### Storage:

Store at -20°C. Stable for one year after shipment.

### Storage Buffer:

PBS with 0.02% sodium azide and 50% glycerol pH 7.3.

Aliquoting is unnecessary for -20°C storage

\*\*\* 20ul sizes contain 0.1% BSA

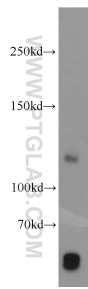
For technical support and original validation data for this product please contact:

T: 1 (888) 4PTGLAB (1-888-478-4522) (toll free in USA), or 1(312) 455-8498 (outside USA)

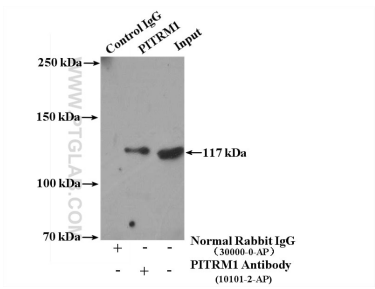
E: [proteintech@ptglab.com](mailto:proteintech@ptglab.com)  
W: [ptglab.com](http://ptglab.com)

This product is exclusively available under Proteintech Group brand and is not available to purchase from any other manufacturer.

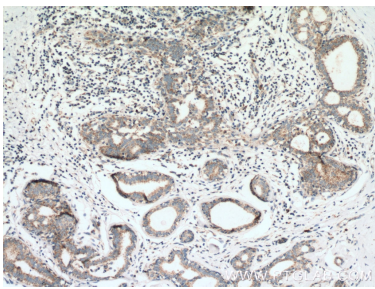
Selected Validation Data



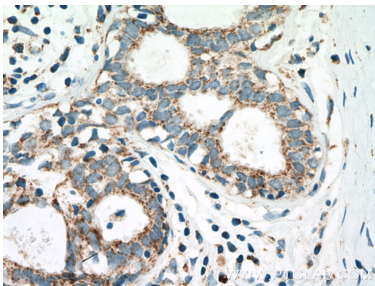
human placenta tissue were subjected to SDS PAGE followed by western blot with 10101-2-AP (PITRM1 antibody) at dilution of 1:300 incubated at room temperature for 1.5 hours.



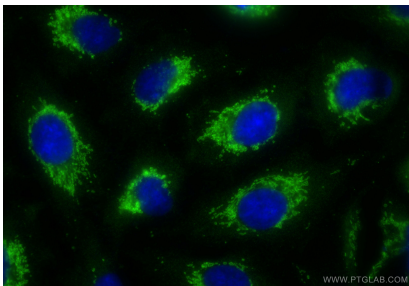
IP result of anti-PITRM1 (IP:10101-2-AP, 4ug; Detection:10101-2-AP 1:500) with A549 cells lysate 2000ug.



Immunohistochemical analysis of paraffin-embedded human breast cancer tissue slide using 10101-2-AP (PITRM1 Antibody) at dilution of 1:200 (under 10x lens). Heat mediated antigen retrieval with Tris-EDTA buffer (pH 9.0).



Immunohistochemical analysis of paraffin-embedded human breast cancer tissue slide using 10101-2-AP (PITRM1 Antibody) at dilution of 1:200 (under 40x lens). Heat mediated antigen retrieval with Tris-EDTA buffer (pH 9.0).



Immunofluorescent analysis of (-20°C Methanol) fixed A549 cells using PITRM1 antibody (10101-2-AP) at dilution of 1:400 and CoraLite®488-Conjugated Goat Anti-Rabbit IgG(H+L) (SA00013-2).