

For Research Use Only

PCTAIRE1 Polyclonal antibody

Catalog Number: 10102-1-AP

Featured Product

4 Publications



Basic Information

Catalog Number:

10102-1-AP

Size:

150ul, Concentration: 750 ug/ml by Nanodrop and 400 ug/ml by Bradford method using BSA as the standard;

Source:

Rabbit

Isotype:

IgG

Immunogen Catalog Number:

AG0151

GenBank Accession Number:

BC001048

GeneID (NCBI):

5127

UNIPROT ID:

Q00536

Full Name:

PCTAIRE protein kinase 1

Calculated MW:

56 kDa

Observed MW:

56-63 kDa

Purification Method:

Antigen affinity purification

Recommended Dilutions:

WB 1:500-1:1000

IP 0.5-4.0 ug for 1.0-3.0 mg of total protein lysate

IHC 1:50-1:500

Applications

Tested Applications:

WB, IP, IHC, ELISA

Cited Applications:

WB, IHC

Species Specificity:

human, mouse

Cited Species:

human, mouse

Note-IHC: suggested antigen retrieval with TE buffer pH 9.0; (*) Alternatively, antigen retrieval may be performed with citrate buffer pH 6.0

Positive Controls:

WB : mouse brain tissue,

IP : mouse brain tissue,

IHC : human pancreas tissue,

Notable Publications

Author	Pubmed ID	Journal	Application
Qi Jia	34687270	Mol Oncol	WB
Hong-Fang Duan	25809707	Tumour Biol	WB
Jasbir Singh Dalal	34259631	Elife	WB

Storage

Storage:

Store at -20°C. Stable for one year after shipment.

Storage Buffer:

PBS with 0.02% sodium azide and 50% glycerol pH 7.3.

Aliquoting is unnecessary for -20°C storage

*** 20ul sizes contain 0.1% BSA

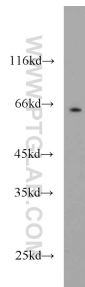
For technical support and original validation data for this product please contact:

T: 1 (888) 4PTGLAB (1-888-478-4522) (toll free in USA), or 1(312) 455-8498 (outside USA)

E: proteintech@ptglab.com
W: ptglab.com

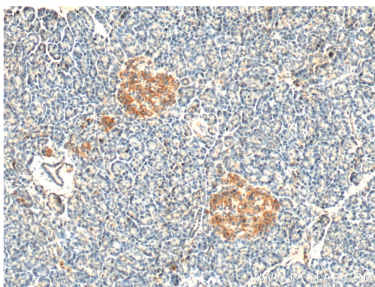
This product is exclusively available under Proteintech Group brand and is not available to purchase from any other manufacturer.

Selected Validation Data

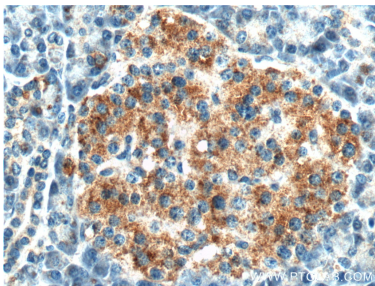


mouse brain tissue were subjected to SDS PAGE followed by western blot with 10102-1-AP (PCTAIRE1 antibody) at dilution of 1:600 incubated at room temperature for 1.5 hours.

IP result of anti-PCTAIRE1 (IP:10102-1-AP, 4ug; Detection:10102-1-AP 1:500) with mouse brain tissue lysate 4400ug.



Immunohistochemical analysis of paraffin-embedded human pancreas tissue slide using 10102-1-AP (PCTAIRE1 antibody at dilution of 1:200 (under 10x lens).



Immunohistochemical analysis of paraffin-embedded human pancreas tissue slide using 10102-1-AP (PCTAIRE1 antibody at dilution of 1:200 (under 40x lens).