

For Research Use Only

LDOC1 Polyclonal antibody

Catalog Number: 10113-2-AP

Featured Product

1 Publications



Basic Information

Catalog Number:

10113-2-AP

Size:

150ul, Concentration: 600 ug/ml by Nanodrop and 333 ug/ml by Bradford method using BSA as the standard;

Source:

Rabbit

Isotype:

IgG

Immunogen Catalog Number:

AG0158

GenBank Accession Number:

BC003104

GeneID (NCBI):

23641

UNIPROT ID:

O95751

Full Name:

leucine zipper, down-regulated in cancer 1

Calculated MW:

17 kDa

Observed MW:

17 kDa, 25 kDa

Purification Method:

Antigen affinity purification

Recommended Dilutions:

WB 1:500-1:1000

Applications

Tested Applications:

WB, ELISA

Cited Applications:

WB

Species Specificity:

human, mouse

Cited Species:

human

Positive Controls:

WB : HeLa cells, SKOV-3 cells

Background Information

LDOC1 contains a leucine zipper-like motif and a proline-rich region that shares marked similarity with an SH3-binding domain. LDOC1 localizes to the nucleus and is down-regulated in some cancer cell lines. LDOC1 regulates the transcriptional response mediated by the nuclear factor B (NF-kappa B). The gene encoding LDOC1 protein has been proposed as a tumor suppressor gene which may have an important role in the development and/or progression of some cancers.

Notable Publications

Author	Pubmed ID	Journal	Application
Huaping Chen	35957693	Front Genet	WB

Storage

Storage:

Store at -20°C. Stable for one year after shipment.

Storage Buffer:

PBS with 0.02% sodium azide and 50% glycerol pH 7.3.

Aliquoting is unnecessary for -20°C storage

*** 20ul sizes contain 0.1% BSA

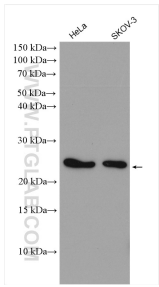
For technical support and original validation data for this product please contact:

T: 1 (888) 4PTGLAB (1-888-478-4522) (toll free in USA), or 1(312) 455-8498 (outside USA)

E: proteintech@ptglab.com
W: ptglab.com

This product is exclusively available under Proteintech Group brand and is not available to purchase from any other manufacturer.

Selected Validation Data



HeLa cells were subjected to SDS PAGE followed by western blot with 10113-2-AP (LDOC1 antibody) at dilution of 1:500 incubated at room temperature for 1.5 hours.