

BUB3 Polyclonal antibody

Catalog Number: 10123-2-AP

Basic Information

Catalog Number: 10123-2-AP	GenBank Accession Number: BC005138	Purification Method: Antigen affinity purification
Size: 150ul , Concentration: 400 µg/ml by Nanodrop and 133 µg/ml by Bradford method using BSA as the standard;	GeneID (NCBI): 9184	Recommended Dilutions: IF 1:20-1:200
Source: Rabbit	Full Name: budding uninhibited by benzimidazoles 3 homolog (yeast)	
Isotype: IgG	Calculated MW: 37 kDa	
Immunogen Catalog Number: AG0167		

Applications

Tested Applications: IF, ELISA	Positive Controls: IF : HepG2 cells,
Species Specificity: human, mouse, rat	

Background Information

BUB3 is a conserved component of the mitotic spindle assembly complex and is an essential component of spindle-assembly checkpoint (SAC) signaling that operates during early embryogenesis. BUB3 null embryos treated with a spindle-depolymerising agent fail to arrest in metaphase and show an increase in mitotic disarray. In mitosis, the SAC prevents anaphase onset until all chromosomes have been attached to the spindle microtubules and aligned correctly at the equatorial metaphase plate. BUB3 is involved in promoting the establishment of correct kinetochore-microtubule (K-MT) attachments in mammalian oocyte meiosis.

Storage

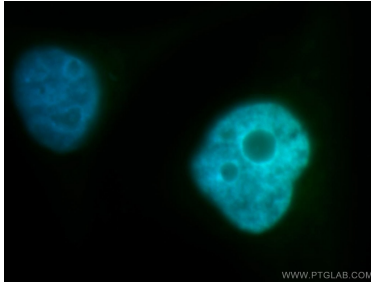
Storage:
Store at -20°C. Stable for one year after shipment.
Storage Buffer:
PBS with 0.02% sodium azide and 50% glycerol pH 7.3.
Aliquoting is unnecessary for -20°C storage

***** 20ul sizes contain 0.1% BSA**

For technical support and original validation data for this product please contact:
T: 1 (888) 4PTGLAB (1-888-478-4522) (toll free in USA), or 1(312) 455-8498 (outside USA)
E: proteintech@ptglab.com
W: ptglab.com

This product is exclusively available under Proteintech Group brand and is not available to purchase from any other manufacturer.

Selected Validation Data



Immunofluorescent analysis of HepG2 cells, using BUB3 antibody 10123-2-AP at 1:100 dilution and FITC-labeled donkey anti-rabbit IgG(green). Blue pseudocolor = DAPI (fluorescent DNA dye).