

For Research Use Only

KIFC3 Polyclonal antibody

Catalog Number: 10125-2-AP

Featured Product

6 Publications



Basic Information

Catalog Number:
10125-2-AP

Size:
150ul , Concentration: 400 µg/ml by Nanodrop and 220 µg/ml by Bradford method using BSA as the standard;

Source:
Rabbit

Isotype:
IgG

Immunogen Catalog Number:
AG0172

GenBank Accession Number:
BC001211

GeneID (NCBI):
3801

Full Name:
kinesin family member C3

Calculated MW:
78 kDa

Observed MW:
80-85 kDa, 95-100 kDa

Purification Method:
Antigen affinity purification

Recommended Dilutions:
WB 1:500-1:1000
IP 0.5-4.0 ug for IP and 1:500-1:1000 for WB

Applications

Tested Applications:
IP, WB, ELISA

Cited Applications:
IF, WB

Species Specificity:
human, mouse

Cited Species:
human, rat, mouse, monkey

Positive Controls:

WB: mouse lung tissue, mouse kidney tissue

IP: mouse kidney tissue,

Background Information

Notable Publications

Author	Pubmed ID	Journal	Application
Tatsuo Miyamoto	32368833	EMBO J	WB
Shimin Lu	36948354	Exp Cell Res	WB
Dietrich Denise D	23954441	Biochim Biophys Acta	WB,IF

Storage

Storage:

Store at -20°C. Stable for one year after shipment.

Storage Buffer:

PBS with 0.02% sodium azide and 50% glycerol pH 7.3.

Aliquoting is unnecessary for -20°C storage

*** 20ul sizes contain 0.1% BSA

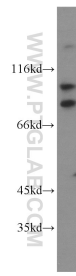
For technical support and original validation data for this product please contact:

T: 1 (888) 4PTGLAB (1-888-478-4522) (toll free in USA), or 1(312) 455-8498 (outside USA)

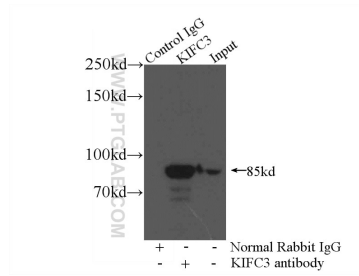
E: proteintech@ptglab.com
W: ptglab.com

This product is exclusively available under Proteintech Group brand and is not available to purchase from any other manufacturer.

Selected Validation Data



mouse lung tissue were subjected to SDS PAGE followed by western blot with 10125-2-AP (KIFC3 antibody) at dilution of 1:500 incubated at room temperature for 1.5 hours.



IP Result of anti-KIFC3 (IP:10125-2-AP, 4ug; Detection:10125-2-AP 1:500) with mouse kidney tissue lysate 7200ug.