

For Research Use Only

CPNE1 Polyclonal antibody

Catalog Number: 10126-2-AP **4 Publications**



Basic Information

Catalog Number: 10126-2-AP	GenBank Accession Number: BC001142	Purification Method: Antigen affinity purification
Size: 150ul , Concentration: 400 µg/ml by Nanodrop and 200 µg/ml by Bradford method using BSA as the standard;	GeneID (NCBI): 8904	Recommended Dilutions: WB 1:500-1:2000
Source: Rabbit	Full Name: copine I	
Isotype: IgG	Calculated MW: 59 kDa	
Immunogen Catalog Number: AG0139	Observed MW: 59 kDa	

Applications

Tested Applications: WB, ELISA	Positive Controls: WB : A431 cells, HEK-293T cells
Cited Applications: IHC, WB	
Species Specificity: human	
Cited Species: human	

Background Information

Copines are a family of evolutionarily conserved calcium-dependent phospholipid-binding proteins (PMID: 9430674). They contain two Ca(2+)- and phospholipid-binding domains known as C2 domains. Copines are potentially involved in regulating membrane trafficking and in protein-protein interactions.

Notable Publications

Author	Pubmed ID	Journal	Application
Yang Wang	34977878	MedComm (2020)	WB
C Heinrich	20010870	Oncogene	WB
Yelin Song	38062811	Front Biosci (Landmark Ed)	WB

Storage

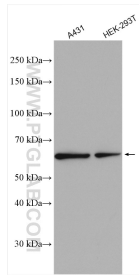
Storage:
Store at -20°C. Stable for one year after shipment.
Storage Buffer:
PBS with 0.02% sodium azide and 50% glycerol pH 7.3.
Aliquoting is unnecessary for -20°C storage

*** 20ul sizes contain 0.1% BSA

For technical support and original validation data for this product please contact:
T: 1 (888) 4PTGLAB (1-888-478-4522) (toll free in USA), or 1(312) 455-8498 (outside USA)
E: proteintech@ptglab.com
W: ptglab.com

This product is exclusively available under Proteintech Group brand and is not available to purchase from any other manufacturer.

Selected Validation Data



Various lysates were subjected to SDS PAGE followed by western blot with 10126-2-AP (CPNE1 antibody) at dilution of 1:1000 incubated at room temperature for 1.5 hours.