

For Research Use Only

LRRC1 Polyclonal antibody, PBS Only

Catalog Number: 10128-2-PBS

Featured Product



Basic Information

Catalog Number:

10128-2-PBS

Size:

100ug, Concentration: 1 mg/ml by Nanodrop;

Source:

Rabbit

Isotype:

IgG

Immunogen Catalog Number:

AG0175

GenBank Accession Number:

BC003193

GeneID (NCBI):

55227

UNIPROT ID:

Q9BTT6

Full Name:

leucine rich repeat containing 1

Calculated MW:

59 kDa

Observed MW:

59 kDa

Purification Method:

Antigen affinity purification

Applications

Tested Applications:

WB, IHC, IF/ICC, Indirect ELISA

Species Specificity:

human, mouse, rat

Background Information

LRRC1 consists of 524 amino acids including 16 leucine-rich repeats and a LAP-specific domain. It has been shown to be highly expressed in several human cancers and can participate in the malignant process of cancer cells, such as hepatocellular carcinoma, breast cancer and non-small cell lung cancer. (PMID: 36370237, PMID: 37505155)

Storage

Storage:

Store at -80°C.

Storage Buffer:

PBS Only

For technical support and original validation data for this product please contact:

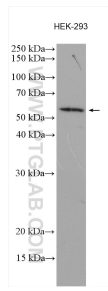
T: 1 (888) 4PTGLAB (1-888-478-4522) (toll free in USA), or 1(312) 455-8498 (outside USA)

E: proteintech@ptglab.com

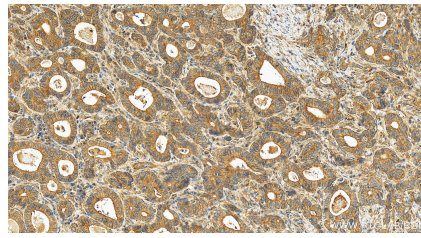
W: ptglab.com

This product is exclusively available under Proteintech Group brand and is not available to purchase from any other manufacturer.

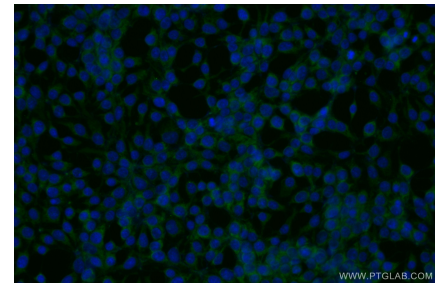
Selected Validation Data



HEK-293 cells were subjected to SDS PAGE followed by western blot with 10128-2-AP (LRRC1 antibody) at dilution of 1:600 incubated at room temperature for 1.5 hours. This data was developed using the same antibody clone with 10128-2-PBS in a different storage buffer formulation.



Immunohistochemical analysis of paraffin-embedded human stomach cancer tissue slide using 10128-2-AP (LRRC1 antibody) at dilution of 1:400 (under 20x lens). Heat mediated antigen retrieval with Tris-EDTA buffer (pH 9.0). This data was developed using the same antibody clone with 10128-2-PBS in a different storage buffer formulation.



Immunofluorescent analysis of (-20°C Ethanol) fixed HEK-293 cells using LRRC1 antibody (10128-2-AP) at dilution of 1:200 and CoraLite®488-Conjugated AffiniPure Goat Anti-Rabbit IgG(H+L). This data was developed using the same antibody clone with 10128-2-PBS in a different storage buffer formulation.