

For Research Use Only

LSM8 Polyclonal antibody, PBS Only

Catalog Number:10134-1-PBS



Basic Information

Catalog Number: 10134-1-PBS	GenBank Accession Number: BC002742	Purification Method: Antigen affinity purification
Size: 100ug, Concentration: 1 mg/ml by Nanodrop;	GeneID (NCBI): 51691	
Source: Rabbit	UNIPROT ID: O95777	
Isotype: IgG	Full Name: LSM8 homolog, U6 small nuclear RNA associated (<i>S. cerevisiae</i>)	
Immunogen Catalog Number: AG0178	Calculated MW: 14 kDa / 75 kDa	
	Observed MW: 11 kDa	

Applications

Tested Applications:
WB, IHC, IF/ICC, Indirect ELISA

Species Specificity:
human

Background Information

Sm-like proteins were identified in a variety of organisms based on sequence homology with the Sm protein family. Sm-like proteins contain the Sm sequence motif, which consists of 2 regions separated by a linker of variable length that folds as a loop. The Sm-like proteins are thought to form a stable heteromer present in tri-snRNP particles, which are important for pre-mRNA splicing [PMID:15075370]. Lsm2-Lsm8 (Lsm stands for Like Sm), binds and stabilizes the 3' end of the spliceosomal U6 snRNA. Lsm proteins facilitate the annealing of U6 snRNA with U4 snRNA in vitro and interact with the U4/U6 annealing factor Prp24, suggesting that Lsm proteins function in U4/U6 snRNP formation in vivo [PMID:15485930, 17251193].

Storage

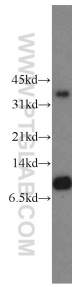
Storage:
Store at -80°C.

Storage Buffer:
PBS only, pH7.3

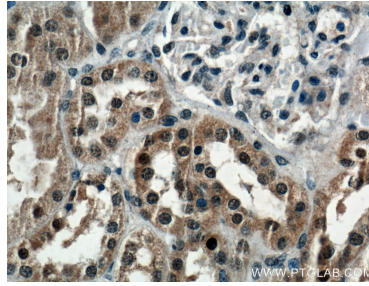
For technical support and original validation data for this product please contact:
T: 1 (888) 4PTGLAB (1-888-478-4522) (toll free in USA), or 1(312) 455-8498 (outside USA) E: proteintech@ptglab.com
W: ptglab.com

This product is exclusively available under Proteintech Group brand and is not available to purchase from any other manufacturer.

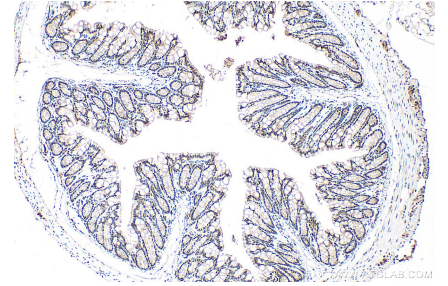
Selected Validation Data



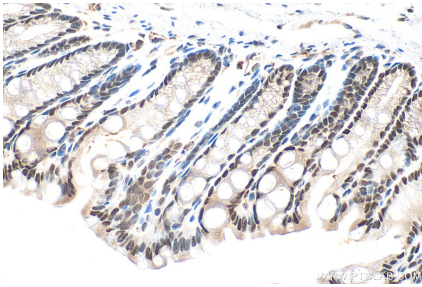
HeLa cells were subjected to SDS PAGE followed by western blot with 10134-1-AP (LSM8 Antibody) at dilution of 1:300 incubated at room temperature for 1.5 hours. This data was developed using the same antibody clone with 10134-1-PBS in a different storage buffer formulation.



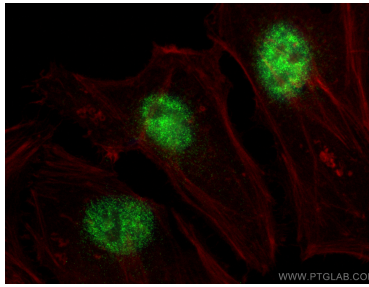
Immunohistochemical analysis of paraffin-embedded human kidney tissue slide using 10134-1-AP (LSM8 Antibody) at dilution of 1:200 (under 40x lens). This data was developed using the same antibody clone with 10134-1-PBS in a different storage buffer formulation.



Immunohistochemical analysis of paraffin-embedded mouse colon tissue slide using 10134-1-AP (LSM8 antibody) at dilution of 1:2000 (under 10x lens). Heat mediated antigen retrieval with Tris-EDTA buffer (pH 9.0). This data was developed using the same antibody clone with 10134-1-PBS in a different storage buffer formulation.



Immunohistochemical analysis of paraffin-embedded mouse colon tissue slide using 10134-1-AP (LSM8 antibody) at dilution of 1:2000 (under 40x lens). Heat mediated antigen retrieval with Tris-EDTA buffer (pH 9.0). This data was developed using the same antibody clone with 10134-1-PBS in a different storage buffer formulation.



Immunofluorescent analysis of (4% PFA) fixed HeLa cells using LSM8 antibody (10134-1-AP) at dilution of 1:1500 and CoraLite®488-Conjugated AffiniPure Goat Anti-Rabbit IgG(H+L) (SA00013-2), CL594-Phalloidin (red). This data was developed using the same antibody clone with 10134-1-PBS in a different storage buffer formulation.