

## Cytokeratin 15 Polyclonal antibody

Catalog Number: 10137-1-AP

17 Publications

## Basic Information

## Catalog Number:

10137-1-AP

## Size:

150ul, Concentration: 750 ug/ml by Nanodrop and 450 ug/ml by Bradford method using BSA as the standard;

## Source:

Rabbit

## Isotype:

IgG

## Immunogen Catalog Number:

AG0185

## GenBank Accession Number:

BC002641

## GeneID (NCBI):

3866

## UNIPROT ID:

P19012

## Full Name:

keratin 15

## Calculated MW:

49 kDa

## Observed MW:

49 kDa

## Purification Method:

Antigen affinity purification

## Recommended Dilutions:

WB 1:2000-1:10000

IP 0.5-4.0 ug for 1.0-3.0 mg of total protein lysate

IHC 1:400-1:1600

IF/ICC 1:50-1:500

## Applications

## Tested Applications:

WB, IHC, IF/ICC, IP, ELISA

## Cited Applications:

WB, IHC, IF

## Species Specificity:

human

## Cited Species:

human, mouse, rat

**Note-IHC: suggested antigen retrieval with TE buffer pH 9.0; (\*) Alternatively, antigen retrieval may be performed with citrate buffer pH 6.0**

## Positive Controls:

WB: A431 cells, mouse thymus tissue, HeLa cells, PC-3 cells

IP: A431 cells,

IHC: human cervical cancer tissue, human oesophagus cancer tissue, human breast cancer tissue

IF/ICC: HeLa cells,

## Background Information

Keratins are a large family of proteins that form the intermediate filament cytoskeleton of epithelial cells, which are classified into two major sequence types. Type I keratins are a group of acidic intermediate filament proteins, including K9-K23, and the hair keratins Ha1-Ha8. Type II keratins are the basic or neutral counterparts to the acidic type I keratins, including K1-K8, and the hair keratins, Hb1-Hb6. Keratin 15 is a type I cytokeratin. It is found in some progenitor basal cells within complex epithelia.

## Notable Publications

Author	Pubmed ID	Journal	Application
Zhang W W	18958303	Mol Vis	IHC
Ximeng Kang	36073016	Biomater Sci	IHC
Shaoheng Xiong	35685420	Front Med (Lausanne)	WB,IF

## Storage

## Storage:

Store at -20°C. Stable for one year after shipment.

## Storage Buffer:

PBS with 0.02% sodium azide and 50% glycerol pH 7.3.

Aliquoting is unnecessary for -20°C storage

\*\*\* 20ul sizes contain 0.1% BSA

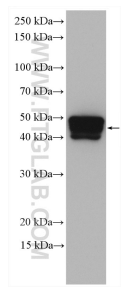
For technical support and original validation data for this product please contact:

T: 1 (888) 4PTGLAB (1-888-478-4522) (toll free in USA), or 1(312) 455-8498 (outside USA)

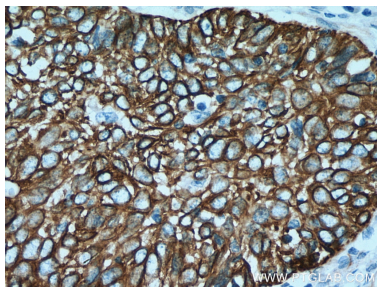
E: [proteintech@ptglab.com](mailto:proteintech@ptglab.com)  
W: [ptglab.com](http://ptglab.com)

This product is exclusively available under Proteintech Group brand and is not available to purchase from any other manufacturer.

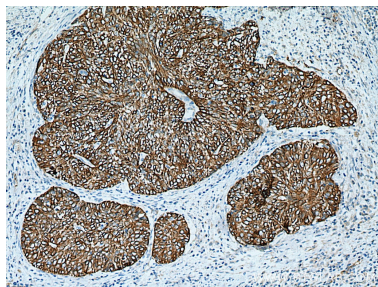
Selected Validation Data



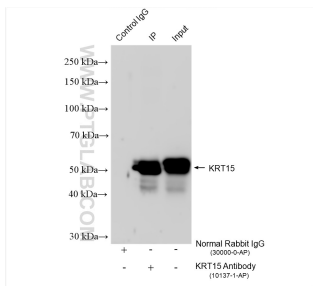
A431 cells were subjected to SDS PAGE followed by western blot with 10137-1-AP (Cytokeratin 15 antibody) at dilution of 1:5000 incubated at room temperature for 1.5 hours.



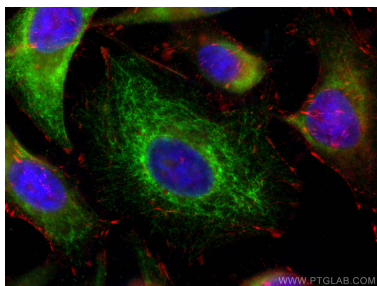
Immunohistochemical analysis of paraffin-embedded human cervical cancer tissue slide using 10137-1-AP (Cytokeratin 15 antibody) at dilution of 1:800 (under 40x lens). Heat mediated antigen retrieval with Tris-EDTA buffer (pH 9.0).



Immunohistochemical analysis of paraffin-embedded human cervical cancer tissue slide using 10137-1-AP (Cytokeratin 15 antibody) at dilution of 1:800 (under 10x lens). Heat mediated antigen retrieval with Tris-EDTA buffer (pH 9.0).



IP result of anti-Cytokeratin 15 (IP:10137-1-AP, 4ug; Detection:10137-1-AP 1:8000) with A431 cells lysate 1000 ug.



Immunofluorescent analysis of (-20°C Ethanol) fixed HeLa cells using Cytokeratin 15 antibody (10137-1-AP) at dilution of 1:200 and Coralite® 488-Conjugated Goat Anti-Rabbit IgG(H+L) (SA00013-2), CL594-phalloidin (red).