

For Research Use Only

PREB Polyclonal antibody

Catalog Number: 10146-2-AP

Featured Product

8 Publications



Basic Information

Catalog Number:

10146-2-AP

Size:

150ul, Concentration: 500 ug/ml by Nanodrop;

Source:

Rabbit

Isotype:

IgG

Immunogen Catalog Number:

AG0202

GenBank Accession Number:

BC002765

GeneID (NCBI):

10113

UNIPROT ID:

Q9HCU5

Full Name:

prolactin regulatory element binding

Calculated MW:

45 kDa

Observed MW:

45 kDa

Purification Method:

Antigen affinity purification

Recommended Dilutions:

WB 1:500-1:1000

IP 0.5-4.0 ug for 1.0-3.0 mg of total protein lysate

IHC 1:500-1:2000

IF/ICC 1:50-1:500

Applications

Tested Applications:

WB, IHC, IF/ICC, IP, ELISA

Cited Applications:

WB, IF, IP, ColP

Species Specificity:

human, mouse

Cited Species:

human, mouse, rat

Positive Controls:

WB : SKOV-3 cells, 3T3-L1 cells, HT-1080 cells, HepG2 cells

IP : SKOV-3 cells,

IHC : mouse intestine, human ovary tumor tissue, human prostate cancer tissue

IF/ICC : HepG2 cells,

Note-IHC: suggested antigen retrieval with TE buffer pH 9.0; (*) Alternatively, antigen retrieval may be performed with citrate buffer pH 6.0

Background Information

PREB contains two PQ-rich potential transactivation domains, but no apparent DNA-binding motif, and exhibits sequence-specific binding to Pit1-binding element of the prolactin (PRL) promoter. It may act as a transcriptional regulator and is thought to be involved in some of the developmental abnormalities observed in patients with partial trisomy 2p.

Notable Publications

Author	Pubmed ID	Journal	Application
Mengyue You	36252341	Redox Biol	WB
Jiaxin Sun	28515233	J Cell Sci	WB, ColP
Joo-Man Park	29601978	Biochim Biophys Acta	WB

Storage

Storage:

Store at -20°C. Stable for one year after shipment.

Storage Buffer:

PBS with 0.02% sodium azide and 50% glycerol pH 7.3.

Aliquoting is unnecessary for -20°C storage

*** 20ul sizes contain 0.1% BSA

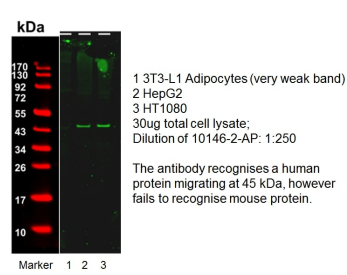
For technical support and original validation data for this product please contact:

T: 1 (888) 4PTGLAB (1-888-478-4522) (toll free in USA), or 1(312) 455-8498 (outside USA)

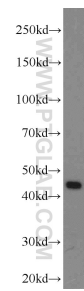
E: proteintech@ptglab.com
W: ptglab.com

This product is exclusively available under Proteintech Group brand and is not available to purchase from any other manufacturer.

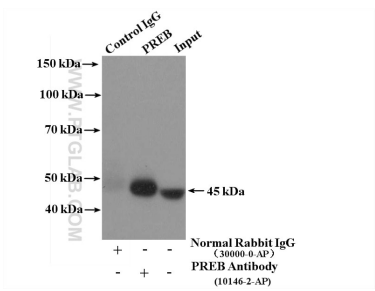
Selected Validation Data



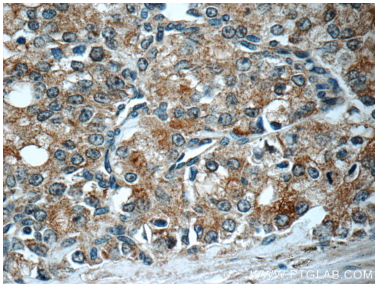
WB result of anti-PREB (10146-2-AP, 1:250) with HepG2 and HT1080 by Dr. Dzmitry Batrakov.



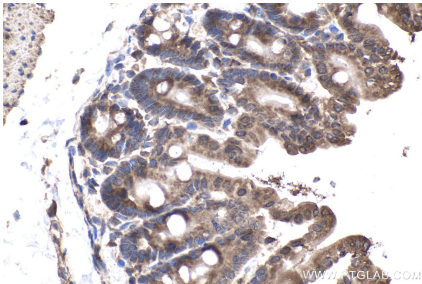
SKOV-3 cells were subjected to SDS PAGE followed by western blot with 10146-2-AP (PREB antibody) at dilution of 1:600 incubated at room temperature for 1.5 hours.



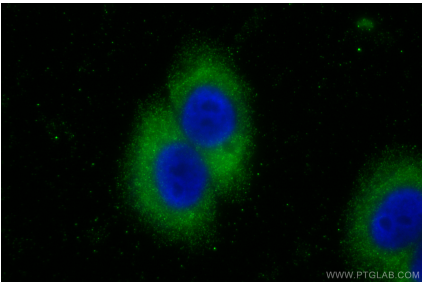
IP result of anti-PREB (IP:10146-2-AP, 4ug; Detection:10146-2-AP 1:500) with SKOV-3 cells lysate 3200ug.



Immunohistochemical analysis of paraffin-embedded human prostate cancer tissue slide using 10146-2-AP (PREB Antibody) at dilution of 1:50 (under 40x lens).



Immunohistochemical analysis of paraffin-embedded mouse intestine tissue slide using 10146-2-AP (PREB antibody) at dilution of 1:1000 (under 40x lens). Heat mediated antigen retrieval with Tris-EDTA buffer (pH 9.0).



Immunofluorescent analysis of (-20°C Ethanol) fixed HepG2 cells using PREB antibody (10146-2-AP) at dilution of 1:200 and CoraLite®488-Conjugated AffiniPure Goat Anti-Rabbit IgG(H+L).