

For Research Use Only

NPRL2 Polyclonal antibody

Catalog Number: 10157-1-AP

Featured Product

8 Publications



Basic Information

Catalog Number:

10157-1-AP

Size:

150ul, Concentration: 500 ug/ml by Nanodrop;

Source:

Rabbit

Isotype:

IgG

Immunogen Catalog Number:

AG0210

GenBank Accession Number:

BC002791

GeneID (NCBI):

10641

UNIPROT ID:

Q8WTW4

Full Name:

tumor suppressor candidate 4

Calculated MW:

44 kDa

Observed MW:

44-50 kDa

Purification Method:

Antigen affinity purification

Recommended Dilutions:

WB 1:500-1:2000

IP 0.5-4.0 ug for 1.0-3.0 mg of total protein lysate

IHC 1:20-1:200

Applications

Tested Applications:

WB, IP, IHC, ELISA

Cited Applications:

WB, IF, IHC, CoIP

Species Specificity:

human, mouse

Cited Species:

human, mouse

Note-IHC: suggested antigen retrieval with TE buffer pH 9.0; (*) Alternatively, antigen retrieval may be performed with citrate buffer pH 6.0

Positive Controls:

WB : mouse pancreas tissue, HeLa cells

IP : mouse pancreas tissue,

IHC : human lung cancer tissue, human pancreas tissue, human skeletal muscle tissue

Background Information

NPRL2 (NPR2 Like, GATOR1 Complex Subunit) is a Protein Coding gene associated with Epilepsy, Familial Focal. As a component of the GATOR1 complex functions as an inhibitor of the amino acid-sensing branch of the TORC1 pathway. Homologous to yeast nitrogen permease (candidate tumor suppressor) (NM_006545, BC021984) gene encodes a protein of molecular mass of 50 kDa. Data by using overlapping and nested homozygous deletions methods indicate that this protein might be a tumor suppressor involved in the development of lung cancers.

Notable Publications

Author	Pubmed ID	Journal	Application
Zhixiong Chen	30178500	Prostate	WB, IHC
Ning Huang	26455908	Mol Carcinog	WB
Shengjun Luo	32234375	Exp Cell Res	WB, IF

Storage

Storage:

Store at -20°C. Stable for one year after shipment.

Storage Buffer:

PBS with 0.02% sodium azide and 50% glycerol pH 7.3.

Aliquoting is unnecessary for -20°C storage

*** 20ul sizes contain 0.1% BSA

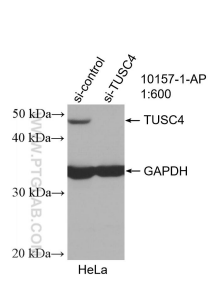
For technical support and original validation data for this product please contact:

T: 1 (888) 4PTGLAB (1-888-478-4522) (toll free in USA), or 1(312) 455-8498 (outside USA)

E: proteintech@ptglab.com
W: ptglab.com

This product is exclusively available under Proteintech Group brand and is not available to purchase from any other manufacturer.

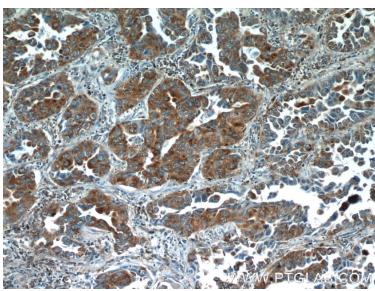
Selected Validation Data



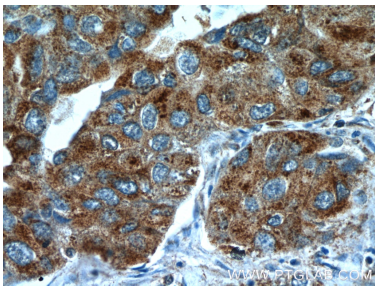
WB result of TUSC4 antibody (10157-1-AP; 1:600; incubated at room temperature for 1.5 hours) with sh-Control and sh-TUSC4 transfected HeLa cells.



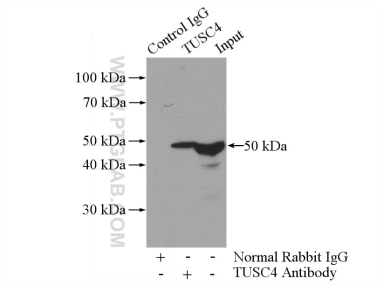
mouse pancreas tissue were subjected to SDS PAGE followed by western blot with 10157-1-AP (TUSC4 antibody) at dilution of 1:1000 incubated at room temperature for 1.5 hours.



Immunohistochemical analysis of paraffin-embedded human lung cancer slide using 10157-1-AP (NPR2L,TUSC4 Antibody) at dilution of 1:50.



Immunohistochemical analysis of paraffin-embedded human lung cancer slide using 10157-1-AP (NPR2L,TUSC4 Antibody) at dilution of 1:50.



IP result of anti-NPR2L (IP:10157-1-AP, 3ug; Detection:10157-1-AP 1:500) with mouse pancreas tissue lysate 4000ug.