

For Research Use Only

# MCHR1 Polyclonal antibody

Catalog Number: 10163-1-AP

1 Publications



## Basic Information

<b>Catalog Number:</b> 10163-1-AP	<b>GenBank Accession Number:</b> BC001736	<b>Purification Method:</b> Antigen affinity purification
<b>Size:</b> 150ul , Concentration: 600 µg/ml by Nanodrop and 150 µg/ml by Bradford method using BSA as the standard;	<b>GeneID (NCBI):</b> 2847	<b>Recommended Dilutions:</b> WB 1:500-1:2000 IHC 1:20-1:200
<b>Source:</b> Rabbit	<b>UNIPROT ID:</b> Q99705	
<b>Isotype:</b> IgG	<b>Full Name:</b> melanin-concentrating hormone receptor 1	
<b>Immunogen Catalog Number:</b> AG0177	<b>Calculated MW:</b> 46-50 kDa	
	<b>Observed MW:</b> 46 kDa, 35 kDa	

## Applications

<b>Tested Applications:</b> WB, IHC, ELISA	<b>Positive Controls:</b>
<b>Cited Applications:</b> WB	<b>WB :</b> Human anterior cingulate,
<b>Species Specificity:</b> human	<b>IHC :</b> human heart tissue,
<b>Cited Species:</b> human	
<b>Note-IHC: suggested antigen retrieval with TE buffer pH 9.0; (*) Alternatively, antigen retrieval may be performed with citrate buffer pH 6.0</b>	

## Notable Publications

Author	Pubmed ID	Journal	Application
Jun Tian	34745423	Oxid Med Cell Longev	WB

## Storage

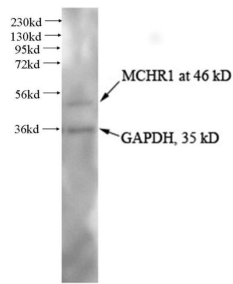
**Storage:**  
Store at -20°C. Stable for one year after shipment.  
**Storage Buffer:**  
PBS with 0.02% sodium azide and 50% glycerol pH 7.3.  
**Aliquoting is unnecessary for -20°C storage**

\*\*\* 20ul sizes contain 0.1% BSA

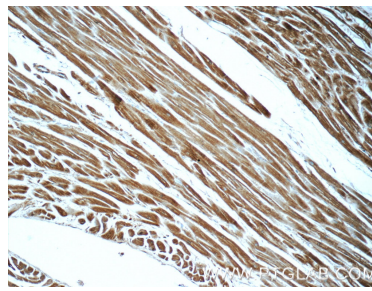
For technical support and original validation data for this product please contact:  
T: 1 (888) 4PTGLAB (1-888-478-4522) (toll free in USA), or 1(312) 455-8498 (outside USA)  
E: [proteintech@ptglab.com](mailto:proteintech@ptglab.com)  
W: [ptglab.com](http://ptglab.com)

This product is exclusively available under Proteintech Group brand and is not available to purchase from any other manufacturer.

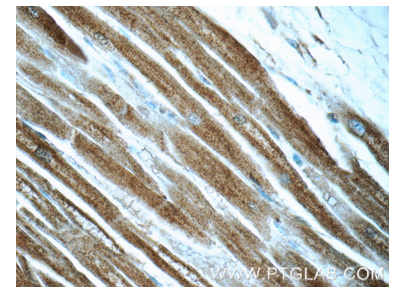
## Selected Validation Data



Human anterior cingulate tissue were subjected to SDS PAGE followed by western blot with 10163-1-AP (MCHR1 antibody) at dilution of 1:1000.



Immunohistochemical analysis of paraffin-embedded human heart tissue slide using 10163-1-AP (MCHR1 Antibody) at dilution of 1:50 (under 10x lens).



Immunohistochemical analysis of paraffin-embedded human heart tissue slide using 10163-1-AP (MCHR1 Antibody) at dilution of 1:50 (under 40x lens).