

For Research Use Only

Complement factor B Polyclonal antibody

Catalog Number: 10170-1-AP

10 Publications



Basic Information

Catalog Number: 10170-1-AP	GenBank Accession Number: BC007990	Purification Method: Antigen affinity purification
Size: 150ul , Concentration: 300 ug/ml by Nanodrop;	GeneID (NCBI): 629	Recommended Dilutions: WB 1:5000-1:50000 IHC 1:200-1:800
Source: Rabbit	UNIPROT ID: P00751	
Isotype: IgG	Full Name: complement factor B	
Immunogen Catalog Number: AG0226	Calculated MW: 86 kDa	
	Observed MW: 93-100 kDa, 60-69 kDa	

Applications

Tested Applications: WB, IHC, ELISA	Positive Controls: WB : human plasma, human blood, rat plasma IHC : human liver tissue,
Cited Applications: WB, IHC, IF	
Species Specificity: human, rat	
Cited Species: human, mouse, rat	

Note-IHC: suggested antigen retrieval with TE buffer pH 9.0; (*) Alternatively, antigen retrieval may be performed with citrate buffer pH 6.0

Background Information

Complement factor B (CFB) is a component of the alternative pathway of complement activation. Complement factor B is a 93-100 kDa glycoprotein and is cleaved into Ba (33 kDa) and Bb (60 kDa) by factor D in the presence of C3b (PMID: 11025450). The active subunit Bb is a serine protease which associates with C3b to form the alternative pathway C3 convertase. Bb is involved in the proliferation of preactivated B lymphocytes, while Ba inhibits their proliferation. This antibody raised against 573-761aa of human complement factor B can recognize complement factor B and Bb fragment.

Notable Publications

Author	Pubmed ID	Journal	Application
Muyao Ye	34642907	Immunol Res	WB
Xinxuan Cheng	33034385	J Cell Physiol	WB
Ming Wu	26984954	Am J Physiol Renal Physiol	

Storage

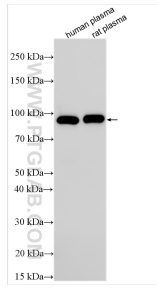
Storage:
Store at -20°C. Stable for one year after shipment.
Storage Buffer:
PBS with 0.02% sodium azide and 50% glycerol pH 7.3.
Aliquoting is unnecessary for -20°C storage

*** 20ul sizes contain 0.1% BSA

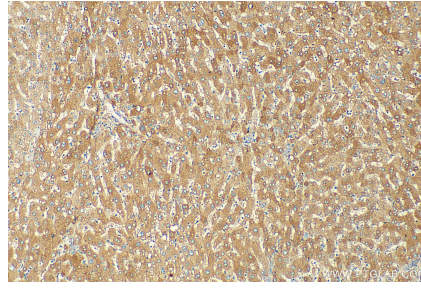
For technical support and original validation data for this product please contact:
T: 1 (888) 4PTGLAB (1-888-478-4522) (toll free in USA), or 1(312) 455-8498 (outside USA)
E: proteintech@ptglab.com
W: ptglab.com

This product is exclusively available under Proteintech Group brand and is not available to purchase from any other manufacturer.

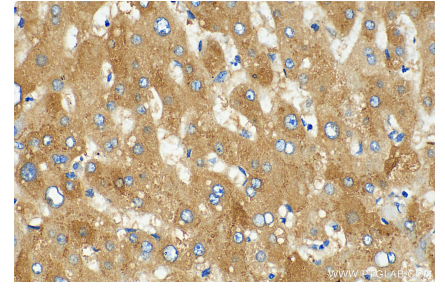
Selected Validation Data



Various lysates were subjected to SDS PAGE followed by western blot with 10170-1-AP (Complement factor B antibody) at dilution of 1:20000 incubated at room temperature for 1.5 hours.



Immunohistochemical analysis of paraffin-embedded human liver tissue slide using 10170-1-AP (Complement factor B antibody) at dilution of 1:400 (under 10x lens). Heat mediated antigen retrieval with Tris-EDTA buffer (pH 9.0).



Immunohistochemical analysis of paraffin-embedded human liver tissue slide using 10170-1-AP (Complement factor B antibody) at dilution of 1:400 (under 40x lens). Heat mediated antigen retrieval with Tris-EDTA buffer (pH 9.0).