

BCS1L Polyclonal antibody

Catalog Number: 10175-2-AP

7 Publications

Basic Information

Catalog Number:

10175-2-AP

Size:

150ul , Concentration: 400 µg/ml by Nanodrop and 333 µg/ml by Bradford method using BSA as the standard;

Source:

Rabbit

Isotype:

IgG

Immunogen Catalog Number:

AG0231

GenBank Accession Number:

BC007500

GeneID (NCBI):

617

UNIPROT ID:

Q9Y276

Full Name:

BCS1-like (yeast)

Calculated MW:

48 kDa

Observed MW:

50-55 kDa

Purification Method:

Antigen affinity purification

Recommended Dilutions:

WB 1:500-1:1000

IHC 1:20-1:200

IF/ICC 1:20-1:200

Applications

Tested Applications:

WB, IF, IHC, ELISA

Cited Applications:

WB

Species Specificity:

human, mouse, rat

Cited Species:

human

Note-IHC: suggested antigen retrieval with TE buffer pH 9.0; (*) Alternatively, antigen retrieval may be performed with citrate buffer pH 6.0

Positive Controls:

WB : A549 cells, HEK-293 cells, HeLa cells, human brain tissue, mouse colon tissue, mouse kidney tissue, mouse liver tissue, mouse skeletal muscle tissue, mouse small intestine tissue, rat liver tissue

IHC : human gliomas tissue, human kidney tissue

IF/ICC : A549 cells,

Background Information

Human BCS1-like (BCS1L), a mitochondrial inner-membrane protein, is a chaperone necessary for the assembly of mitochondrial respiratory chain complex III. Recently studies indicated that the mutations in this protein may cause the GRACILE (growth retardation, aminoaciduria, cholestasis, iron overload, lactic acidosis, and early death) syndrome, a recessively inherited lethal disease characterized by fetal growth retardation, lactic acidosis, aminoaciduria, cholestasis, and abnormalities in iron metabolism.

Notable Publications

Author	Pubmed ID	Journal	Application
Mineri Rossana R	19492094	PLoS One	WB
Sánchez Ester E	23168492	Biochim Biophys Acta	WB
Morán María M	20518024	Hum Mutat	WB

Storage

Storage:

Store at -20°C. Stable for one year after shipment.

Storage Buffer:

PBS with 0.02% sodium azide and 50% glycerol pH 7.3.

Aliquoting is unnecessary for -20°C storage

*** 20ul sizes contain 0.1% BSA

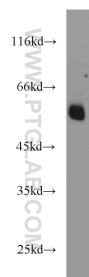
For technical support and original validation data for this product please contact:

T: 1 (888) 4PTGLAB (1-888-478-4522) (toll free in USA), or 1(312) 455-8498 (outside USA)

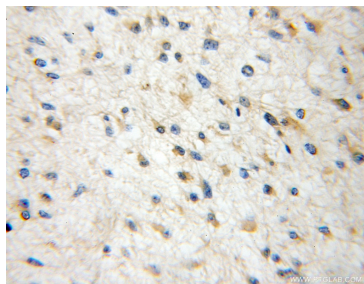
E: proteintech@ptglab.com
 W: ptglab.com

This product is exclusively available under Proteintech Group brand and is not available to purchase from any other manufacturer.

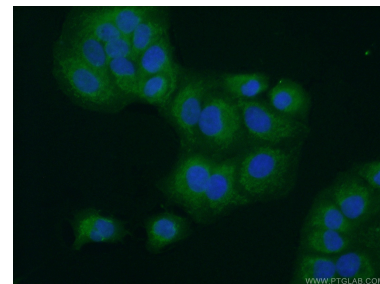
Selected Validation Data



A549 cells were subjected to SDS PAGE followed by western blot with 10175-2-AP (BCS1L antibody) at dilution of 1:1000 incubated at room temperature for 1.5 hours.



Immunohistochemical analysis of paraffin-embedded human gliomas using 10175-2-AP (BCS1L antibody) at dilution of 1:50 (under 10x lens).



Immunofluorescent analysis of (10% Formaldehyde) fixed A549 cells using 10175-2-AP (BCS1L antibody) at dilution of 1:50 and Alexa Fluor 488-conjugated AffiniPure Goat Anti-Rabbit IgG(H+L).