

For Research Use Only

# Placental lactogen Polyclonal antibody



Catalog Number: 10178-1-AP

## Basic Information

<b>Catalog Number:</b> 10178-1-AP	<b>GenBank Accession Number:</b> BC002717	<b>Purification Method:</b> Antigen affinity purification
<b>Size:</b> 150ul , Concentration: 700 µg/ml by Nanodrop and 367 µg/ml by Bradford method using BSA as the standard;	<b>GeneID (NCBI):</b> 1442	<b>Recommended Dilutions:</b> WB 1:500-1:1000 IHC 1:50-1:500
<b>Source:</b> Rabbit	<b>Full Name:</b> chorionic somatomammotropin hormone 1 (placental lactogen)	
<b>Isotype:</b> IgG	<b>Calculated MW:</b> 25 kDa	
<b>Immunogen Catalog Number:</b> AG0201	<b>Observed MW:</b> 22-25 kDa	

## Applications

### Tested Applications:

IHC, WB, ELISA

### Species Specificity:

human

**Note-IHC: suggested antigen retrieval with TE buffer pH 9.0; (\*) Alternatively, antigen retrieval may be performed with citrate buffer pH 6.0**

### Positive Controls:

WB : human placenta tissue,

IHC : human placenta tissue,

## Background Information

Chorionic somatomammotropin hormone 1 (placental lactogen, CSH1), is a hormone with the molecular weight of 25 kDa. The data suggest that this protein may link with the Silver-Russell syndrome (SRS), a disease of pre- and postnatal growth restriction and a characteristic small, triangular face. SRS is also accompanied by other dysmorphic features including fifth finger clinodactyly and skeletal asymmetry.

## Storage

### Storage:

Store at -20°C. Stable for one year after shipment.

### Storage Buffer:

PBS with 0.02% sodium azide and 50% glycerol pH 7.3.

Aliquoting is unnecessary for -20°C storage

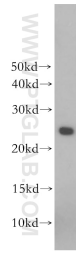
For technical support and original validation data for this product please contact:

T: 1 (888) 4PTGLAB (1-888-478-4522) (toll free in USA), or 1(312) 455-8498 (outside USA)

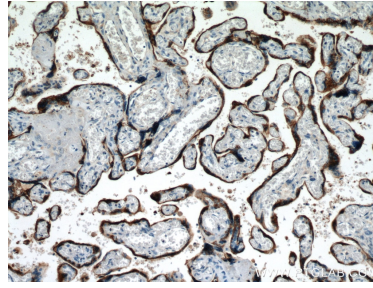
E: [proteintech@ptglab.com](mailto:proteintech@ptglab.com)  
W: [ptglab.com](http://ptglab.com)

**This product is exclusively available under Proteintech Group brand and is not available to purchase from any other manufacturer.**

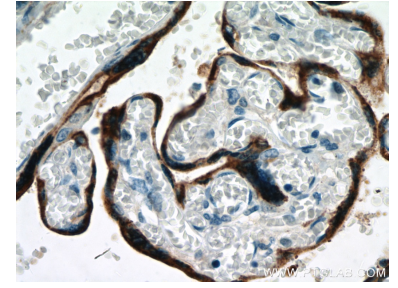
## Selected Validation Data



human placenta tissue were subjected to SDS PAGE followed by western blot with 10178-1-AP (Placental lactogen antibody) at dilution of 1:500 incubated at room temperature for 1.5 hours.



Immunohistochemical analysis of paraffin-embedded human placenta tissue slide using 10178-1-AP (Placental lactogen antibody) at dilution of 1:200 (under 10x lens. Heat mediated antigen retrieval with Tris-EDTA buffer (pH 9.0).



Immunohistochemical analysis of paraffin-embedded human placenta tissue slide using 10178-1-AP (Placental lactogen antibody) at dilution of 1:200 (under 40x lens. Heat mediated antigen retrieval with Tris-EDTA buffer (pH 9.0).