

For Research Use Only

TGFBI/BIGH3 Polyclonal antibody

Catalog Number: 10188-1-AP

Featured Product

71 Publications



Basic Information

Catalog Number:

10188-1-AP

Size:

150ul, Concentration: 550 ug/ml by Nanodrop;

Source:

Rabbit

Isotype:

IgG

Immunogen Catalog Number:

AG0241

GenBank Accession Number:

BC000097

GeneID (NCBI):

7045

ENSEMBL Gene ID:

ENSG00000120708

UNIPROT ID:

Q15582

Full Name:

transforming growth factor, beta-induced, 68kDa

Calculated MW:

683 aa, 75 kDa

Observed MW:

64 kDa

Purification Method:

Antigen affinity purification

Recommended Dilutions:

WB: 1:1000-1:4000

IP: 0.5-4.0 ug for 1.0-3.0 mg of total protein lysate

IHC: 1:50-1:500

IF/ICC: 1:200-1:800

FC (Intra): 0.40 ug per 10⁶ cells in a 100 ul suspension

Applications

Tested Applications:

WB, IHC, IF/ICC, FC (Intra), IP, ELISA

Cited Applications:

WB, IHC, IF, IP, Neutralization, Cell treatment

Species Specificity:

human, mouse

Cited Species:

human, mouse, rat

Note-IHC: suggested antigen retrieval with TE buffer pH 9.0; (*) Alternatively, antigen retrieval may be performed with citrate buffer pH 6.0

Positive Controls:

WB: mouse eye tissue, mouse liver tissue, human kidney tissue, Y79 cells, HeLa cells

IP: HeLa cells,

IHC: human kidney tissue, human liver cancer tissue, mouse eye tissue

IF/ICC: TGF beta 1 treated A549 cells, Y79 cells

FC (Intra): Y79 cells,

Background Information

TGFBI, also named as BIGH3, Kerato-epithelin and RGD-CAP, binds to type I, II, and IV collagens. TGFBI is an adhesion protein which may play an important role in cell-collagen interactions. In cartilage, it may be involved in endochondral bone formation. TGFBI is an extracellular matrix adaptor protein, it has been reported to be differentially expressed in transformed tissues. TGFBI is a predictive factor of the response to chemotherapy, and suggest the use of TGFBI-derived peptides as possible therapeutic adjuvants for the enhancement of responses to chemotherapy. (PMID:20509890) Defects in TGFBI are the cause of epithelial basement membrane corneal dystrophy (EBMD). Defects in TGFBI are the cause of corneal dystrophy Groenouw type 1 (CDGG1). Defects in TGFBI are the cause of corneal dystrophy lattice type 1 (CDL1). Defects in TGFBI are a cause of corneal dystrophy Thiel-Behnke type (CDTB). Defects in TGFBI are the cause of Reis-Buecklers corneal dystrophy (CDRB). Defects in TGFBI are the cause of lattice corneal dystrophy type 3A (CDL3A). Defects in TGFBI are the cause of Avellino corneal dystrophy (ACD).

Notable Publications

Author	Pubmed ID	Journal	Application
Nobuhiro Nakazawa	31571056	Ann Surg Oncol	IHC
Nathalie Allaman-Pillet	26387839	Exp Eye Res	WB, IF
Taku Sato	30156359	Cancer Sci	WB, IHC

Storage

Storage:

Store at -20°C. Stable for one year after shipment.

Storage Buffer:

PBS with 0.02% sodium azide and 50% glycerol, pH7.3

Aliquoting is unnecessary for -20°C storage

*** 20ul sizes contain 0.1% BSA

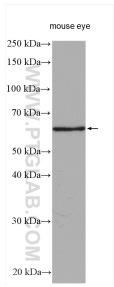
For technical support and original validation data for this product please contact:

T: 1 (888) 4PTGLAB (1-888-478-4522) (toll free in USA), or 1(312) 455-8498 (outside USA)

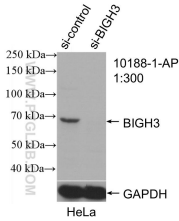
E: proteintech@ptglab.com
W: ptglab.com

This product is exclusively available under Proteintech Group brand and is not available to purchase from any other manufacturer.

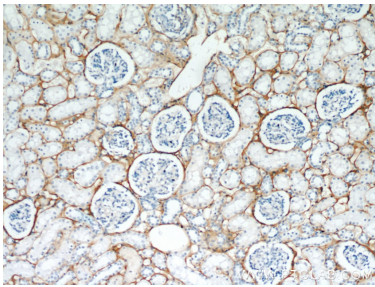
Selected Validation Data



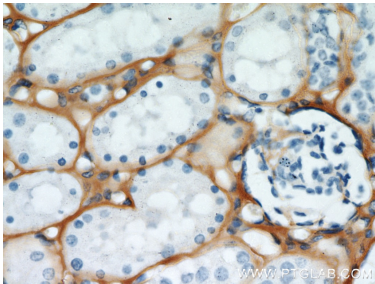
Mouse eye tissue were subjected to SDS PAGE followed by western blot with 10188-1-AP (TGFB1 / BIGH3 antibody) at dilution of 1:2000 incubated at room temperature for 1.5 hours.



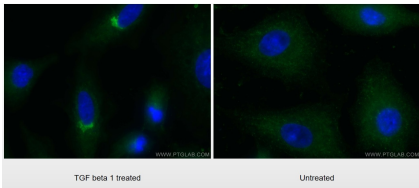
WB result of TGFB1 / BIGH3 antibody (10188-1-AP; 1:300; incubated at room temperature for 1.5 hours) with sh-Control and sh-TGFB1 / BIGH3 transfected HeLa cells.



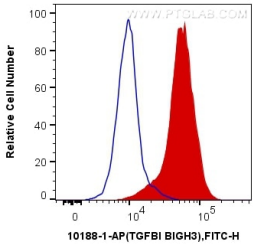
Immunohistochemical analysis of paraffin-embedded human kidney using 10188-1-AP (TGFB1 / BIGH3 antibody) at dilution of 1:100 (under 10x lens).



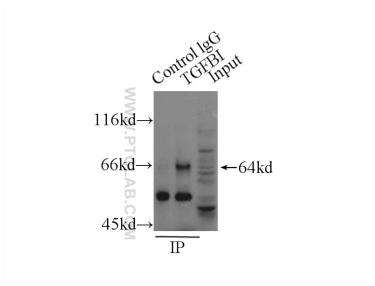
Immunohistochemical analysis of paraffin-embedded human kidney using 10188-1-AP (TGFB1 / BIGH3 antibody) at dilution of 1:100 (under 40x lens).



Immunofluorescent analysis of (-20°C Methanol) fixed A549 cells, untreated (left) or TGF-β-treated (right), using TGFB1 / BIGH3 antibody (10188-1-AP) at dilution of 1:400 and CoraLite®488-Conjugated AffiniPure Goat Anti-Rabbit IgG(H+L).



1X10⁶ Y79 cells were intracellularly stained with 0.4 ug Anti-Human TGFB1 / BIGH3 (10188-1-AP) and CoraLite®488-Conjugated AffiniPure Goat Anti-Rabbit IgG(H+L) at dilution 1:1000 (red), or 0.4 ug Control Antibody. Cells were fixed with 4% PFA and permeabilized with Flow Cytometry Perm Buffer (PF00011-C).



IP result of anti-TGFB1 / BIGH3 (IP:10188-1-AP, 3ug; Detection:10188-1-AP 1:300) with HeLa cells lysate 1000ug.