

For Research Use Only

GNL2 Polyclonal antibody

Catalog Number: 10190-2-AP



Basic Information

Catalog Number: 10190-2-AP	GenBank Accession Number: BC000107	Purification Method: Antigen affinity purification
Size: 150ul , Concentration: 800 ug/ml by Nanodrop;	GeneID (NCBI): 29889	Recommended Dilutions: WB 1:500-1:1000
Source: Rabbit	UNIPROT ID: Q13823	IHC 1:20-1:200
Isotype: IgG	Full Name: guanine nucleotide binding protein-like 2 (nucleolar)	IF/ICC 1:1000-1:4000
Immunogen Catalog Number: AG0243	Calculated MW: 731 aa, 84 kDa	
	Observed MW: 100 kDa	

Applications

Tested Applications: WB, IHC, IF/ICC, ELISA	Positive Controls:
Species Specificity: human, mouse	WB : Jurkat cells, K-562 cells, Ramos cells, NIH/3T3 cells
Note-IHC: suggested antigen retrieval with TE buffer pH 9.0; (*) Alternatively, antigen retrieval may be performed with citrate buffer pH 6.0	IHC : human breast cancer tissue,
	IF/ICC : A431 cells,

Background Information

GNL2 (G protein nucleolar 2) has a crucial role in the pathogenesis of gliomas by influencing key cellular processes, particularly enhanced protein synthesis, which ultimately contributes to the development of gliomas. In addition, GNL2 was found to affect the overall protein synthesis of ribosomal protein L11 in glioma cells. The calculated MW of GNL2 is 84 kDa, but the observed MW is around 100 kDa, which may be due to glycosylation modification.

Storage

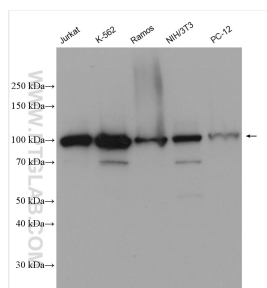
Storage:
Store at -20°C. Stable for one year after shipment.
Storage Buffer:
PBS with 0.02% sodium azide and 50% glycerol pH 7.3.
Aliquoting is unnecessary for -20°C storage

*** 20ul sizes contain 0.1% BSA

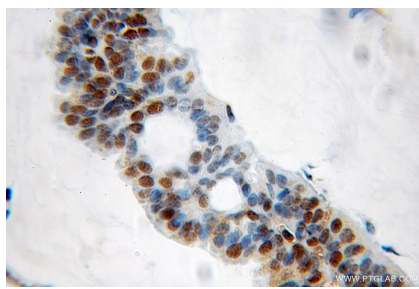
For technical support and original validation data for this product please contact:
T: 1 (888) 4PTGLAB (1-888-478-4522) (toll free in USA), or 1(312) 455-8498 (outside USA)
E: proteintech@ptglab.com
W: ptglab.com

This product is exclusively available under Proteintech Group brand and is not available to purchase from any other manufacturer.

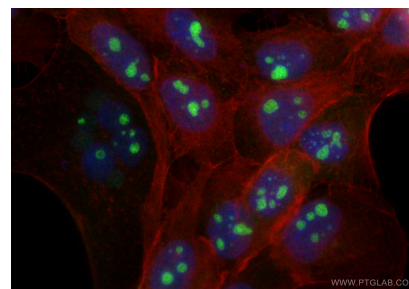
Selected Validation Data



Various lysates were subjected to SDS PAGE followed by western blot with 10190-2-AP (GNL2 antibody) at dilution of 1:800 incubated at room temperature for 1.5 hours.



Immunohistochemical analysis of paraffin-embedded human breast cancer using 10190-2-AP (GNL2 antibody) at dilution of 1:50 (under 10x lens).



Immunofluorescent analysis of (4% PFA) fixed A431 cells using GNL2 antibody (10190-2-AP) at dilution of 1:2000 and Multi-rAb CoraLite® Plus 488-Goat Anti-Rabbit Recombinant Secondary Antibody (H+L) (RGAR002), CL594-Phalloidin (red).