

For Research Use Only

RCN2 Polyclonal antibody

Catalog Number: 10193-2-AP

Featured Product

13 Publications



Basic Information

Catalog Number:

10193-2-AP

Size:

150ul, Concentration: 350 ug/ml by Nanodrop and 293 ug/ml by Bradford method using BSA as the standard;

Source:

Rabbit

Isotype:

IgG

Immunogen Catalog Number:

AG0247

GenBank Accession Number:

BC004892

GeneID (NCBI):

5955

UNIPROT ID:

Q14257

Full Name:

reticulocalbin 2, EF-hand calcium binding domain

Calculated MW:

37 kDa

Observed MW:

55 kDa

Purification Method:

Antigen affinity purification

Recommended Dilutions:

WB 1:1000-1:4000

IP 0.5-4.0 ug for 1.0-3.0 mg of total protein lysate

IHC 1:20-1:200

IF/ICC 1:350-1:1400

Applications

Tested Applications:

WB, IHC, IF/ICC, IP, ELISA

Cited Applications:

WB, IHC, IF, CoIP

Species Specificity:

human, mouse, rat

Cited Species:

human, mouse, rat

Note-IHC: suggested antigen retrieval with TE buffer pH 9.0; (*) Alternatively, antigen retrieval may be performed with citrate buffer pH 6.0

Positive Controls:

WB: HEK-293 cells, mouse lung tissue, human brain tissue, HeLa cells

IP: mouse lung tissue,

IHC: human gliomas tissue, human testis tissue

IF/ICC: HepG2 cells, HeLa cells

Background Information

Reticulocalbin 2 (RCN2) is a Ca(2+)-binding protein that is specifically localized in the endoplasmic reticulum (ER). It is also termed ERC-55, i.e. ER calcium-binding protein of 55 kDa. It is a single copy gene and is encoded by an approximately 1900-base mRNA, which shows a ubiquitous expression pattern. The protein comprises an amino-terminal signal sequence followed by six copies of the EF-hand Ca²⁺ binding motif.

Notable Publications

Author	Pubmed ID	Journal	Application
Makoto Nakakido	27572108	Int J Oncol	WB,IF
Gang Wang	29218241	Am J Cancer Res	IHC,WB
Chengjie Mei	34094681	Am J Cancer Res	WB

Storage

Storage:

Store at -20°C. Stable for one year after shipment.

Storage Buffer:

PBS with 0.02% sodium azide and 50% glycerol pH 7.3.

Aliquoting is unnecessary for -20°C storage

*** 20ul sizes contain 0.1% BSA

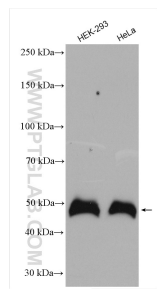
For technical support and original validation data for this product please contact:

T: 1 (888) 4PTGLAB (1-888-478-4522) (toll free in USA), or 1(312) 455-8498 (outside USA)

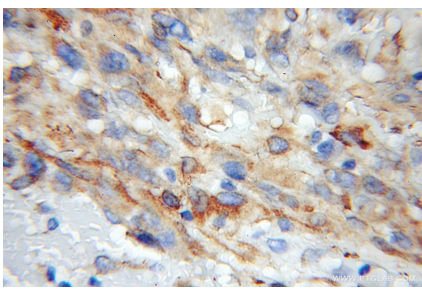
E: proteintech@ptglab.com
W: ptglab.com

This product is exclusively available under Proteintech Group brand and is not available to purchase from any other manufacturer.

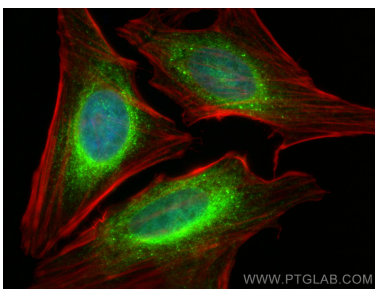
Selected Validation Data



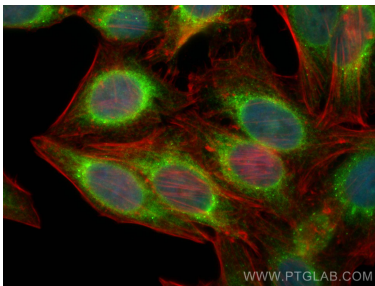
Various lysates were subjected to SDS PAGE followed by western blot with 10193-2-AP (RCN2 antibody) at dilution of 1:2000 incubated at room temperature for 1.5 hours.



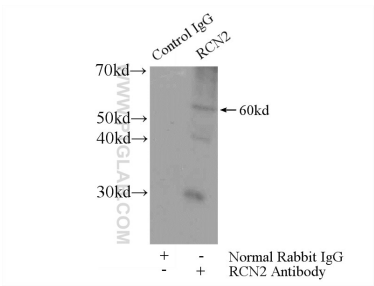
Immunohistochemical analysis of paraffin-embedded human gliomas using 10193-2-AP (RCN2 antibody) at dilution of 1:50 (under 10x lens).



Immunofluorescent analysis of (4% PFA) fixed HeLa cells using RCN2 antibody (10193-2-AP) at dilution of 1:700 and CoraLite®488-Conjugated AffiniPure Goat Anti-Rabbit IgG(H+L), CL594-phalloidin (red).



Immunofluorescent analysis of (4% PFA) fixed HepG2 cells using RCN2 antibody (10193-2-AP) at dilution of 1:700 and CoraLite®488-Conjugated AffiniPure Goat Anti-Rabbit IgG(H+L), CL594-phalloidin (red).



IP result of anti-RCN2 (IP:10193-2-AP, 4ug; Detection:10193-2-AP 1:400) with mouse lung tissue lysate 2800ug.