

For Research Use Only

CAPG Polyclonal antibody

Catalog Number: 10194-1-AP

Featured Product

21 Publications



Basic Information

| | | |
|---|--|---|
| Catalog Number: 10194-1-AP | GenBank Accession Number: BC000728 | Purification Method: Antigen affinity purification |
| Size: 150ul , Concentration: 600 µg/ml by Nanodrop; | GeneID (NCBI): 822 | Recommended Dilutions: WB 1:1000-1:4000 IP 0.5-4.0 ug for IP and 1:500-1:1000 for WB |
| Source: Rabbit | Full Name: capping protein (actin filament), gelsolin-like | IHC 1:50-1:500 |
| Isotype: IgG | Calculated MW: 39 kDa | |
| Immunogen Catalog Number: AG0248 | Observed MW: 39-42 kDa | |

Applications

Tested Applications:
IHC, IP, WB, ELISA

Cited Applications:
IF, IHC, WB

Species Specificity:
human, mouse, rat

Cited Species:
human, rat, mouse

Note-IHC: suggested antigen retrieval with TE buffer pH 9.0; (*) Alternatively, antigen retrieval may be performed with citrate buffer pH 6.0

Positive Controls:

WB: HL-60 cells, HeLa cells, rat lung tissue, mouse heart, rat heart

IP: mouse heart tissue,

IHC: human prostate cancer tissue, human tonsillitis tissue, human lung cancer tissue

Background Information

CapG (gelsolin-like actin-capping protein) is a member of the gelsolin superfamily proteins, which regulates actin filament length by capping or severing filaments. Studies have shown a role for CapG in regulating cell motility. The expression of CapG is upregulated under hypoxia and in turn increases the motility of cells. Recently it has been reported that the overexpression of CapG is associated with the progression of lung adenocarcinoma as well as lymphatic invasion status of cholangiocarcinoma, which may be used for prognosis of these tumors. (21908955,22155129)

Notable Publications

| Author | Pubmed ID | Journal | Application |
|---------------|-----------|--------------|-------------|
| Wei Wu | 29113183 | Oncol Lett | WB, IHC |
| Bin Chen | 29285153 | Exp Ther Med | WB |
| Yashuang Yang | 36385596 | Front Med | WB |

Storage

Storage:

Store at -20°C. Stable for one year after shipment.

Storage Buffer:

PBS with 0.02% sodium azide and 50% glycerol pH 7.3.

Aliquoting is unnecessary for -20°C storage

*** 20ul sizes contain 0.1% BSA

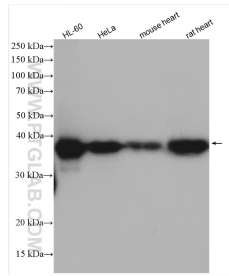
For technical support and original validation data for this product please contact:

T: 1 (888) 4PTGLAB (1-888-478-4522) (toll free in USA), or 1(312) 455-8498 (outside USA)

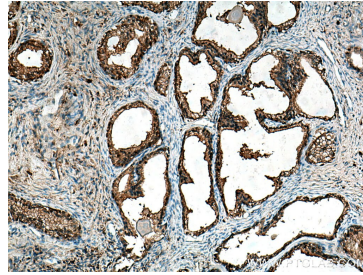
E: proteintech@ptglab.com
W: ptglab.com

This product is exclusively available under Proteintech Group brand and is not available to purchase from any other manufacturer.

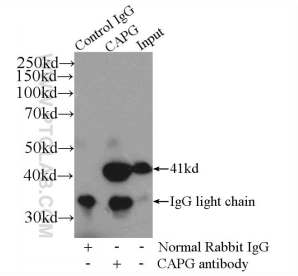
Selected Validation Data



Various lysates were subjected to SDS PAGE followed by western blot with 10194-1-AP (CAPG antibody) at dilution of 1:2000 incubated at room temperature for 1.5 hours.



Immunohistochemical analysis of paraffin-embedded human prostate cancer tissue slide using 10194-1-AP (CAPG antibody) at dilution of 1:200 (under 10x lens). Heat mediated antigen retrieval with Tris-EDTA buffer (pH 9.0).



IP Result of anti-CAPG (IP:10194-1-AP, 4 μ g; Detection:10194-1-AP 1:500) with mouse heart tissue lysate 4000 μ g.